

# CopperPress™ Submittal

By Merit Brass Co.

## Press Adapter Flange



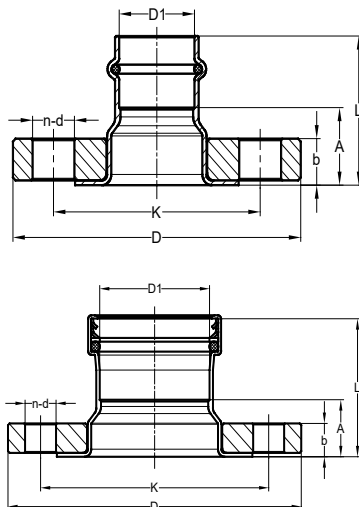
<b>Job Name</b>	
<b>Job Location</b>	
<b>P.O.#</b>	
<b>Engineer</b>	
<b>Contractor</b>	
<b>Wholesaler</b>	
<b>Merit Associate</b>	

**CopperPress™ Press Adapter Flange** is available in sizes 1" - 4" and is made of lead-free\* dezincification resistant copper with an EPDM or HNBR o-ring. **CopperPress™** fittings are designed to be used with ASTM B88 Type K, L, and M 1/2" - 2" copper tubing in the hard-drawn condition and soft copper tubing in sizes 1/2" - 1 1/4".

- **Visually Indicates Pressed Ring (VIPR)** - facilitates immediate identification of un-pressed connections
- **Leak Before Press (LBP)** - in addition to the VIPR, all sizes have leak before press technology, which guarantees a visual indication if the fitting is not pressed; 1/2" has a 3 path LBP system and 3/4" & up have a 4 path LBP system
- **Permanent Application Marking** - imprinted on fitting body for quick H<sub>2</sub>O or gas application identification
- **Lead-Free\* Construction** - fully compliant with current lead-free\* laws
- **Copper Ends** - protect against dezincification and stress corrosion cracking

**Operational Parameters:** Operating/Test Pressure = 300 PSI/600 PSI, Temperature Range 0°F - 250°F

**Approvals:** NSF ANSI/CAN 61, UPC, cUPC, IPC, IAPMO PS-117, ICC-ES-PMG, ASME B16.51



Part Number	D1 (in)	L (in)	A (in)	b (in)	D (in)	K (in)	d (in)	n
MB60000	1	2.28	1.34	0.63	4.33	3.11	0.63	4
MB60010	1-1/4	2.28	1.14	0.63	4.53	3.50	0.63	4
MB60020	1-1/2	2.60	1.14	0.63	4.92	3.86	0.63	4
MB60030	2	2.76	1.14	0.63	5.91	4.76	0.75	4
MB60040	2-1/2	2.83	1.10	0.69	7.09	5.51	0.75	4
MB60050	3	3.35	1.34	0.81	7.48	5.98	0.75	4
MB60060	4	3.74	1.34	0.89	9.06	7.52	0.75	8

Merit Brass Company reserves the right to change any portion of the information shown on this sheet without obligation to change our press fitting line, CopperPress™, by Merit Brass Co. previously or subsequently sold. Visit [www.meritbrass.com/pressftg](http://www.meritbrass.com/pressftg) for the most current information. Every precaution has been taken in preparing this sheet. Merit Brass Company cannot be held responsible for omissions or typographical errors. \*Conforms with lead content requirements for lead-free plumbing as defined by the U.S. Safe Drinking Water Act. Certified <=0.25 weighted average % lead.

Find us in  
**MasterSpec®**  
Powered by Deltek Specpoint®

# CopperPress™ Submittal

By Merit Brass Co.



## XL Press 45° Elbow



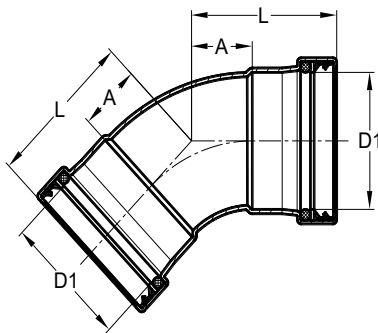
<b>Job Name</b>	
<b>Job Location</b>	
<b>P.O.#</b>	
<b>Engineer</b>	
<b>Contractor</b>	
<b>Wholesaler</b>	
<b>Merit Associate</b>	

**CopperPress™ XL Press 45° Elbow** is available in sizes 2-1/2" - 4" and is made of lead-free\* dezincification resistant copper with an EPDM or HNBR o-ring. **CopperPress™** fittings are designed to be used with ASTM B88 Type K, L, and M copper tubing in the hard-drawn condition.

- **Visually Indicates Pressed Ring (VIPR)** - facilitates immediate identification of un-pressed connections
- **Leak Before Press (LBP)** - in addition to the VIPR, all sizes have leak before press technology, which guarantees a visual indication if the fitting is not pressed; 1/2" has a 3 path LBP system and 3/4" & up have a 4 path LBP system
- **Permanent Application Marking** - imprinted on fitting body for quick H<sub>2</sub>O or gas application identification
- **Lead-Free\* Construction** - fully compliant with current lead-free laws
- **Copper Ends** - protect against dezincification and stress corrosion cracking

**Operational Parameters:** Operating/Test Pressure = 300 PSI/600 PSI, Temperature Range 0°F - 250°F

**Approvals:** NSF ANSI/CAN 61, UPC, cUPC, IPC, IAPMO PS-117, ICC-ES-PMG, ASME B16.51



Part Number	D1 (in)	L (in)	A (in)
MB22170	2-1/2	3.15	1.42
MB22180	3	3.70	1.69
MB22190	4	4.80	2.40

Merit Brass Company reserves the right to change any portion of the information shown on this sheet without obligation to change our press fitting line, CopperPress™, by Merit Brass Co. previously or subsequently sold. Visit [www.meritbrass.com/pressfitg](http://www.meritbrass.com/pressfitg) for the most current information. Every precaution has been taken in preparing this sheet. Merit Brass Company cannot be held responsible for omissions or typographical errors. \*Conforms with lead content requirements for lead-free plumbing as defined by the U.S. Safe Drinking Water Act. Certified <=0.25 weighted average % lead.

# CopperPress™ Submittal

By Merit Brass Co.



## XL Press 45° Street Elbow



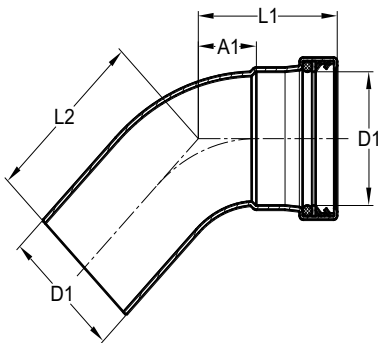
<b>Job Name</b>	
<b>Job Location</b>	
<b>P.O.#</b>	
<b>Engineer</b>	
<b>Contractor</b>	
<b>Wholesaler</b>	
<b>Merit Associate</b>	

**CopperPress™ XL Press 45° Street Elbow** is available in sizes 2-1/2" - 4" and is made of lead-free\* dezincification resistant copper with an EPDM or HNBR o-ring. **CopperPress™** fittings are designed to be used with ASTM B88 Type K, L, and M copper tubing in the hard-drawn condition.

- **Visually Indicates Pressed Ring (VIPR)** - facilitates immediate identification of un-pressed connections
- **Leak Before Press (LBP)** - in addition to the VIPR, all sizes have leak before press technology, which guarantees a visual indication if the fitting is not pressed; 1/2" has a 3 path LBP system and 3/4" & up have a 4 path LBP system
- **Permanent Application Marking** - imprinted on fitting body for quick H<sub>2</sub>O or gas application identification
- **Lead-Free\* Construction** - fully compliant with current lead-free\* laws
- **Copper Ends** - protect against dezincification and stress corrosion cracking

**Operational Parameters:** Operating/Test Pressure = 300 PSI/600 PSI, Temperature Range 0°F - 250°F

**Approvals:** NSF ANSI/CAN 61, UPC, cUPC, IPC, IAPMO PS-117, ICC-ES-PMG, ASME B16.51



Part Number	D1 (in)	L1 (in)	A (in)	L2 (in)
MB22200	2-1/2	3.15	1.42	3.39
MB22210	3	3.70	1.69	3.98
MB22220	4	4.80	2.40	5.08

Merit Brass Company reserves the right to change any portion of the information shown on this sheet without obligation to change our press fitting line, CopperPress™, by Merit Brass Co. previously or subsequently sold. Visit [www.meritbrass.com/pressfitg](http://www.meritbrass.com/pressfitg) for the most current information. Every precaution has been taken in preparing this sheet. Merit Brass Company cannot be held responsible for omissions or typographical errors. \*Conforms with lead content requirements for lead-free plumbing as defined by the U.S. Safe Drinking Water Act. Certified <=0.25 weighted average % lead.

# CopperPress™ Submittal

By Merit Brass Co.



## XL Press 90° Elbow



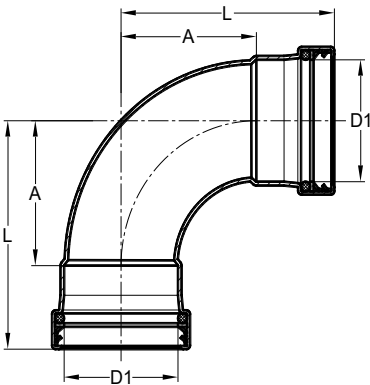
<b>Job Name</b>	
<b>Job Location</b>	
<b>P.O.#</b>	
<b>Engineer</b>	
<b>Contractor</b>	
<b>Wholesaler</b>	
<b>Merit Associate</b>	

**CopperPress™ XL Press 90° Elbow** is available in sizes 2-1/2" - 4" and is made of lead-free\* dezincification resistant copper with an EPDM or HNBR o-ring. **CopperPress™** fittings are designed to be used with ASTM B88 Type K, L, and M copper tubing in the hard-drawn condition.

- **Visually Indicates Pressed Ring (VIPR)** - facilitates immediate identification of un-pressed connections
- **Leak Before Press (LBP)** - in addition to the VIPR, all sizes have leak before press technology, which guarantees a visual indication if the fitting is not pressed; 1/2" has a 3 path LBP system and 3/4" & up have a 4 path LBP system
- **Permanent Application Marking** - imprinted on fitting body for quick H<sub>2</sub>O or gas application identification
- **Lead-Free\* Construction** - fully compliant with current lead-free laws
- **Copper Ends** - protect against dezincification and stress corrosion cracking

**Operational Parameters:** Operating/Test Pressure = 300 PSI/600 PSI, Temperature Range 0°F - 250°F

**Approvals:** NSF ANSI/CAN 61, UPC, cUPC, IPC, IAPMO PS-117, ICC-ES-PMG, ASME B16.51



Part Number	D1 (in)	L (in)	A (in)
MB22110	2-1/2	4.84	3.11
MB22120	3	5.71	3.70
MB22130	4	7.17	4.76

Merit Brass Company reserves the right to change any portion of the information shown on this sheet without obligation to change our press fitting line, CopperPress™, by Merit Brass Co. previously or subsequently sold. Visit [www.meritbrass.com/pressfitg](http://www.meritbrass.com/pressfitg) for the most current information. Every precaution has been taken in preparing this sheet. Merit Brass Company cannot be held responsible for omissions or typographical errors. \*Conforms with lead content requirements for lead-free plumbing as defined by the U.S. Safe Drinking Water Act. Certified <=0.25 weighted average % lead.

Find us in  
**MasterSpec®**  
 Powered by Deltek Specpoint®

# CopperPress™ Submittal

By Merit Brass Co.



## XL Press 90° Street Elbow



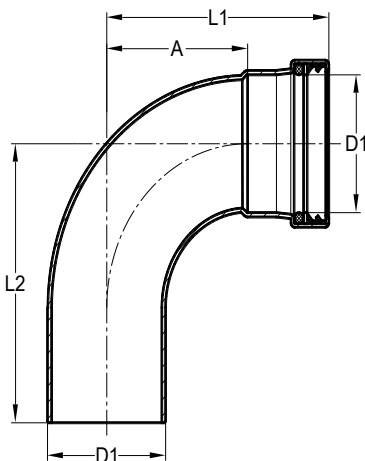
<b>Job Name</b>	
<b>Job Location</b>	
<b>P.O.#</b>	
<b>Engineer</b>	
<b>Contractor</b>	
<b>Wholesaler</b>	
<b>Merit Associate</b>	

**CopperPress™ XL Press 90° Street Elbow** is available in sizes 2-1/2" - 4" and is made of lead-free\* dezincification resistant copper with an EPDM or HNBR o-ring. **CopperPress®** fittings are designed to be used with ASTM B88 Type K, L, and M copper tubing in the hard-drawn condition.

- **Visually Indicates Pressed Ring (VIPR)** - facilitates immediate identification of un-pressed connections
- **Leak Before Press (LBP)** - in addition to the VIPR, all sizes have leak before press technology, which guarantees a visual indication if the fitting is not pressed; 1/2" has a 3 path LBP system and 3/4" & up have a 4 path LBP system
- **Permanent Application Marking** - imprinted on fitting body for quick H<sub>2</sub>O or gas application identification
- **Lead-Free\* Construction** - fully compliant with current lead-free laws
- **Copper Ends** - protect against dezincification and stress corrosion cracking

**Operational Parameters:** Operating/Test Pressure = 300 PSI/600 PSI, Temperature Range 0°F - 250°F

**Approvals:** NSF ANSI/CAN 61, UPC, cUPC, IPC, IAPMO PS-117, ICC-ES-PMG, ASME B16.51



Part Number	D1 (in)	L1 (in)	A (in)	L2 (in)
MB22140	2-1/2	4.69	2.95	5.16
MB22150	3	5.55	3.54	6.06
MB22160	4	7.17	4.76	7.64

Merit Brass Company reserves the right to change any portion of the information shown on this sheet without obligation to change our press fitting line, CopperPress™, by Merit Brass Co. previously or subsequently sold. Visit [www.meritbrass.com/pressfitg](http://www.meritbrass.com/pressfitg) for the most current information. Every precaution has been taken in preparing this sheet. Merit Brass Company cannot be held responsible for omissions or typographical errors. \*Conforms with lead content requirements for lead-free plumbing as defined by the U.S. Safe Drinking Water Act. Certified <=0.25 weighted average % lead.

Find us in  
**MasterSpec®**  
Powered by Deltek Specpoint®

# CopperPress™ Submittal

By Merit Brass Co.



## XL Press Bushing Reducer



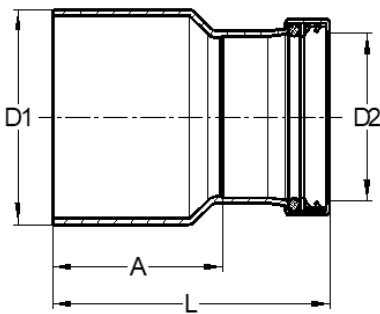
<b>Job Name</b>	
<b>Job Location</b>	
<b>P.O.#</b>	
<b>Engineer</b>	
<b>Contractor</b>	
<b>Wholesaler</b>	
<b>Merit Associate</b>	

**CopperPress™ XL Press Bushing Reducer** is available in sizes 2-1/2" - 4" and is made of lead-free\* dezincification resistant copper with an EPDM or HNBR o-ring. **CopperPress™** fittings are designed to be used with ASTM B88 Type K, L, and M copper tubing in the hard-drawn condition.

- **Visually Indicates Pressed Ring (VIPR)** - facilitates immediate identification of un-pressed connections
- **Leak Before Press (LBP)** - in addition to the VIPR, all sizes have leak before press technology, which guarantees a visual indication if the fitting is not pressed; 1/2" has a 3 path LBP system and 3/4" & up have a 4 path LBP system
- **Permanent Application Marking** - imprinted on fitting body for quick H<sub>2</sub>O or gas application identification
- **Lead-Free\* Construction** - fully compliant with current lead-free\* laws
- **Copper Ends** - protect against dezincification and stress corrosion cracking

**Operational Parameters:** Operating/Test Pressure = 300 PSI/600 PSI, Temperature Range 0°F - 250°F

**Approvals:** NSF ANSI/CAN 61, UPC, cUPC, IPC, IAPMO PS-117, ICC-ES-PMG, ASME B16.51



Part Number	D1 (in)	D2 (in)	L (in)	A (in)
MB22400	2-1/2	1	4.25	3.31
MB22410	2-1/2	1-1/4	4.06	2.91
MB22420	2-1/2	1-1/2	4.29	2.83
MB22430	2-1/2	2	4.25	2.64
MB22440	3	1-1/4	4.53	3.39
MB22450	3	1-1/2	4.92	3.46
MB22460	3	2	4.80	3.19
MB22470	3	2-1/2	4.53	2.80
MB22480	4	2	6.18	4.57
MB22490	4	2-1/2	5.79	4.06
MB22500	4	3	5.71	3.70

Find us in  
**MasterSpec®**  
Powered by Deltek Specpoint®

Merit Brass Company reserves the right to change any portion of the information shown on this sheet without obligation to change our press fitting line, CopperPress™, by Merit Brass Co. previously or subsequently sold. Visit [www.meritbrass.com/pressfig](http://www.meritbrass.com/pressfig) for the most current information. Every precaution has been taken in preparing this sheet. Merit Brass Company cannot be held responsible for omissions or typographical errors. \*Conforms with lead content requirements for lead-free plumbing as defined by the U.S. Safe Drinking Water Act. Certified <=0.25 weighted average % lead.

# CopperPress™ Submittal

By Merit Brass Co.



## XL Press Cap



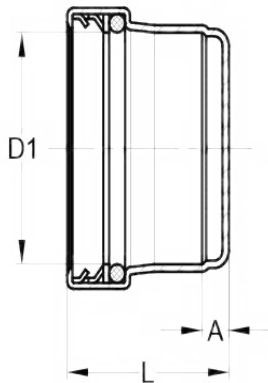
<b>Job Name</b>	
<b>Job Location</b>	
<b>P.O.#</b>	
<b>Engineer</b>	
<b>Contractor</b>	
<b>Wholesaler</b>	
<b>Merit Associate</b>	

**CopperPress™ XL Press Cap** is available in sizes 2-1/2" - 4" and is made of lead-free\* dezincification resistant copper with an EPDM or HNBR o-ring. **CopperPress™** fittings are designed to be used with ASTM B88 Type K, L, and M copper tubing in the hard-drawn condition.

- **Visually Indicates Pressed Ring (VIPR)** - facilitates immediate identification of un-pressed connections
- **Leak Before Press (LBP)** - in addition to the VIPR, all sizes have leak before press technology, which guarantees a visual indication if the fitting is not pressed; 1/2" has a 3 path LBP system and 3/4" & up have a 4 path LBP system
- **Permanent Application Marking** - imprinted on fitting body for quick H<sub>2</sub>O or gas application identification
- **Lead-Free\* Construction** - fully compliant with current lead-free laws
- **Copper Ends** - protect against dezincification and stress corrosion cracking

**Operational Parameters:** Operating/Test Pressure = 300 PSI/600 PSI, Temperature Range 0°F - 250°F

**Approvals:** NSF ANSI/CAN 61, UPC, cUPC, IPC, IAPMO PS-117, ICC-ES-PMG, ASME B16.51



Part Number	D1 (in)	L (in)	A (in)
MB23110	2-1/2	2.17	0.43
MB23120	3	2.44	0.43
MB23130	4	2.87	0.47

Merit Brass Company reserves the right to change any portion of the information shown on this sheet without obligation to change our press fitting line, CopperPress™, by Merit Brass Co. previously or subsequently sold. Visit [www.meritbrass.com/pressfitg](http://www.meritbrass.com/pressfitg) for the most current information. Every precaution has been taken in preparing this sheet. Merit Brass Company cannot be held responsible for omissions or typographical errors. \*Conforms with lead content requirements for lead-free plumbing as defined by the U.S. Safe Drinking Water Act. Certified <=0.25 weighted average % lead.

# CopperPress™ Submittal

By Merit Brass Co.



## XL Press Coupling Without Stop



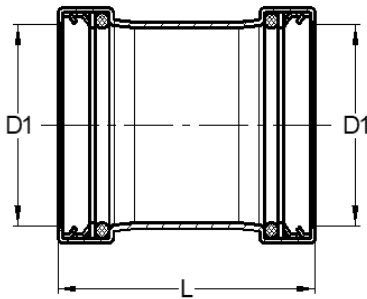
<b>Job Name</b>	
<b>Job Location</b>	
<b>P.O.#</b>	
<b>Engineer</b>	
<b>Contractor</b>	
<b>Wholesaler</b>	
<b>Merit Associate</b>	

**CopperPress™ XL Press Coupling Without Stop** is available in sizes 2-1/2" - 4" and is made of lead-free\* dezincification resistant copper with an EPDM or HNBR o-ring. **CopperPress™** fittings are designed to be used with ASTM B88 Type K, L, and M copper tubing in the hard-drawn condition.

- **Visually Indicates Pressed Ring (VIPR)** - facilitates immediate identification of un-pressed connections
- **Leak Before Press (LBP)** - in addition to the VIPR, all sizes have leak before press technology, which guarantees a visual indication if the fitting is not pressed; 1/2" has a 3 path LBP system and 3/4" & up have a 4 path LBP system
- **Permanent Application Marking** - imprinted on fitting body for quick H<sub>2</sub>O or gas application identification
- **Lead-Free\* Construction** - fully compliant with current lead-free\* laws
- **Copper Ends** - protect against dezincification and stress corrosion cracking

**Operational Parameters:** Operating/Test Pressure = 300 PSI/600 PSI, Temperature Range 0°F - 250°F

**Approvals:** NSF ANSI/CAN 61, UPC, cUPC, IPC, IAPMO PS-117, ICC-ES-PMG, ASME B16.51



Part Number	D1 (in)	L (in)
MB22260	2-1/2	3.86
MB22270	3	4.37
MB22280	4	5.20

Merit Brass Company reserves the right to change any portion of the information shown on this sheet without obligation to change our press fitting line, CopperPress™, by Merit Brass Co. previously or subsequently sold. Visit [www.meritbrass.com/pressfitg](http://www.meritbrass.com/pressfitg) for the most current information. Every precaution has been taken in preparing this sheet. Merit Brass Company cannot be held responsible for omissions or typographical errors. \*Conforms with lead content requirements for lead-free plumbing as defined by the U.S. Safe Drinking Water Act. Certified <=0.25 weighted average % lead.

Find us in  
**MasterSpec®**  
Powered by Deltek Specpoint®



# CopperPress™ Submittal

By Merit Brass Co.



## XL Press Coupling Reducer



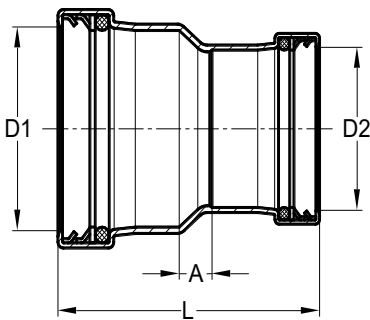
<b>Job Name</b>	
<b>Job Location</b>	
<b>P.O.#</b>	
<b>Engineer</b>	
<b>Contractor</b>	
<b>Wholesaler</b>	
<b>Merit Associate</b>	

**CopperPress™ XL Press Coupling Reducer** is available in sizes 2-1/2" - 4" and is made of lead-free\* dezincification resistant copper with an EPDM or HNBR o-ring. **CopperPress™** fittings are designed to be used with ASTM B88 Type K, L, and M 1 copper tubing in the hard-drawn condition.

- **Visually Indicates Pressed Ring (VIPR)** - facilitates immediate identification of un-pressed connections
- **Leak Before Press (LBP)** - in addition to the VIPR, all sizes have leak before press technology, which guarantees a visual indication if the fitting is not pressed; 1/2" has a 3 path LBP system and 3/4" & up have a 4 path LBP system
- **Permanent Application Marking** - imprinted on fitting body for quick H<sub>2</sub>O or gas application identification
- **Lead-Free\* Construction** - fully compliant with current lead-free\* laws
- **Copper Ends** - protect against dezincification and stress corrosion cracking

**Operational Parameters:** Operating/Test Pressure = 300 PSI/600 PSI, Temperature Range 0°F - 250°F

**Approvals:** NSF ANSI/CAN 61, UPC, cUPC, IPC, IAPMO PS-117, ICC-ES-PMG, ASME B16.51



Part Number	D1 (in)	D2 (in)	L (in)	A (in)
MB22290	2-1/2	1	4.07	1.40
MB22300	2-1/2	1-1/4	3.90	1.02
MB22310	2-1/2	1-1/2	4.17	0.98
MB22320	2-1/2	2	3.98	0.63
MB22330	3	1-1/4	4.76	1.61
MB22340	3	1-1/2	4.76	1.30
MB22350	3	2	4.65	1.02
MB22360	3	2-1/2	4.29	0.55
MB22370	4	2	5.98	1.97
MB22380	4	2-1/2	5.47	1.34
MB22390	4	3	5.24	0.83

Merit Brass Company reserves the right to change any portion of the information shown on this sheet without obligation to change our press fitting line, CopperPress™, by Merit Brass Co. previously or subsequently sold. Visit [www.meritbrass.com/pressfitg](http://www.meritbrass.com/pressfitg) for the most current information. Every precaution has been taken in preparing this sheet. Merit Brass Company cannot be held responsible for omissions or typographical errors. \*Conforms with lead content requirements for lead-free plumbing as defined by the U.S. Safe Drinking Water Act. Certified <=0.25 weighted average % lead.

Find us in  
**MasterSpec®**  
Powered by Deltek Specpoint®

# CopperPress™ Submittal

By Merit Brass Co.



## XL Press Coupling With Stop



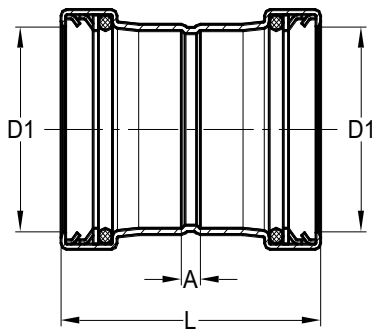
<b>Job Name</b>	
<b>Job Location</b>	
<b>P.O.#</b>	
<b>Engineer</b>	
<b>Contractor</b>	
<b>Wholesaler</b>	
<b>Merit Associate</b>	

**CopperPress™ XL Press Coupling With Stop** is available in sizes 2-1/2" - 4" and is made of lead-free\* dezincification resistant copper with an EPDM or HNBR o-ring. **CopperPress™** fittings are designed to be used with ASTM B88 Type K, L, and M copper tubing in the hard-drawn condition.

- **Visually Indicates Pressed Ring (VIPR)** - facilitates immediate identification of un-pressed connections
- **Leak Before Press (LBP)** - in addition to the VIPR, all sizes have leak before press technology, which guarantees a visual indication if the fitting is not pressed; 1/2" has a 3 path LBP system and 3/4" & up have a 4 path LBP system
- **Permanent Application Marking** - imprinted on fitting body for quick H<sub>2</sub>O or gas application identification
- **Lead-Free\* Construction** - fully compliant with current lead-free laws
- **Copper Ends** - protect against dezincification and stress corrosion cracking

**Operational Parameters:** Operating/Test Pressure = 300 PSI/600 PSI, Temperature Range 0°F - 250°F

**Approvals:** NSF ANSI/CAN 61, UPC, cUPC, IPC, IAPMO PS-117, ICC-ES-PMG, ASME B16.51



Part Number	D1 (in)	L (in)	A (in)
MB22230	2-1/2	3.86	0.39
MB22240	3	4.37	0.35
MB22250	4	5.20	0.39

Merit Brass Company reserves the right to change any portion of the information shown on this sheet without obligation to change our press fitting line, CopperPress™, by Merit Brass Co. previously or subsequently sold. Visit [www.meritbrass.com/pressftg](http://www.meritbrass.com/pressftg) for the most current information. Every precaution has been taken in preparing this sheet. Merit Brass Company cannot be held responsible for omissions or typographical errors. \*Conforms with lead content requirements for lead-free plumbing as defined by the U.S. Safe Drinking Water Act. Certified <=0.25 weighted average % lead.

Find us in  
**MasterSpec®**  
Powered by Deltek Specpoint®

# CopperPress™ Submittal

By Merit Brass Co.



## XL Press Equal Tee



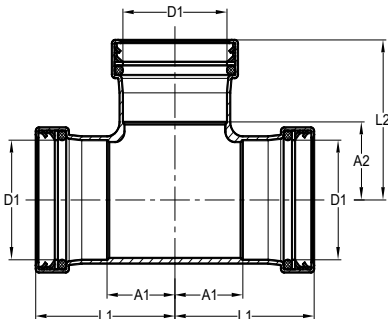
<b>Job Name</b>	
<b>Job Location</b>	
<b>P.O.#</b>	
<b>Engineer</b>	
<b>Contractor</b>	
<b>Wholesaler</b>	
<b>Merit Associate</b>	

**CopperPress™ XL Press Equal Tee** is available in sizes 2-1/2" - 4" and is made of lead-free\* dezincification resistant copper with an EPDM or HNBR o-ring. **CopperPress™** fittings are designed to be used with ASTM B88 Type K, L, and M copper tubing in the hard-drawn condition.

- **Visually Indicates Pressed Ring (VIPR)** - facilitates immediate identification of un-pressed connections
- **Leak Before Press (LBP)** - in addition to the VIPR, all sizes have leak before press technology, which guarantees a visual indication if the fitting is not pressed; 1/2" has a 3 path LBP system and 3/4" & up have a 4 path LBP system
- **Permanent Application Marking** - imprinted on fitting body for quick H<sub>2</sub>O or gas application identification
- **Lead-Free\* Construction** - fully compliant with current lead-free\* laws
- **Copper Ends** - protect against dezincification and stress corrosion cracking

**Operational Parameters:** Operating/Test Pressure = 300 PSI/600 PSI, Temperature Range 0°F - 250°F

**Approvals:** NSF ANSI/CAN 61, UPC, cUPC, IPC, IAPMO PS-117, ICC-ES-PMG, ASME B16.51



Part Number	D1 (in)	L1 (in)	A1 (in)	L2 (in)	A2 (in)
MB24255	2-1/2	3.56	1.83	3.66	1.93
MB24440	3	4.11	2.11	4.33	2.32
MB24550	4	5.00	2.60	5.12	2.72

Merit Brass Company reserves the right to change any portion of the information shown on this sheet without obligation to change our press fitting line, CopperPress™, by Merit Brass Co. previously or subsequently sold. Visit [www.meritbrass.com/pressftg](http://www.meritbrass.com/pressftg) for the most current information. Every precaution has been taken in preparing this sheet. Merit Brass Company cannot be held responsible for omissions or typographical errors. \*Conforms with lead content requirements for lead-free plumbing as defined by the U.S. Safe Drinking Water Act. Certified <=0.25 weighted average % lead.

Find us in  
**MasterSpec®**  
Powered by Deltek Specpoint®

# CopperPress™ Submittal

By Merit Brass Co.



## XL Press Female Adapter

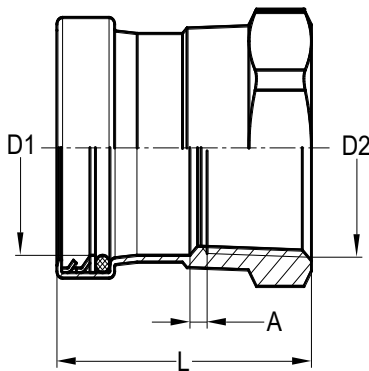
<b>Job Name</b>	
<b>Job Location</b>	
<b>P.O.#</b>	
<b>Engineer</b>	
<b>Contractor</b>	
<b>Wholesaler</b>	
<b>Merit Associate</b>	

**CopperPress™ XL Press Female Adapter** is available in sizes 2-1/2" - 4" and is made of lead-free\* dezincification resistant copper with an EPDM or HNBR o-ring. **CopperPress™** fittings are designed to be used with ASTM B88 Type K, L, and M copper tubing in the hard-drawn condition.

- **Visually Indicates Pressed Ring (VIPR)** - facilitates immediate identification of un-pressed connections
- **Leak Before Press (LBP)** - in addition to the VIPR, all sizes have leak before press technology, which guarantees a visual indication if the fitting is not pressed; 1/2" has a 3 path LBP system and 3/4" & up have a 4 path LBP system
- **Permanent Application Marking** - imprinted on fitting body for quick H<sub>2</sub>O or gas application identification
- **Lead-Free\* Construction** - fully compliant with current lead-free\* laws
- **Copper Ends** - protect against dezincification and stress corrosion cracking

**Operational Parameters:** Operating/Test Pressure = 300 PSI/600 PSI, Temperature Range 0°F - 250°F

**Approvals:** NSF ANSI/CAN 61, UPC, cUPC, IPC, IAPMO PS-117, ICC-ES-PMG, ASME B16.51



Part Number	D1 (in)	D2 (in)	L (in)	A (in)
MB22750	2-1/2	2-1/2 FPT	3.54	0.67
MB22760	3	3 FPT	3.98	0.75
MB22770	4	4 FPT	4.37	0.59

Merit Brass Company reserves the right to change any portion of the information shown on this sheet without obligation to change our press fitting line, CopperPress™, by Merit Brass Co. previously or subsequently sold. Visit [www.meritbrass.com/pressfitg](http://www.meritbrass.com/pressfitg) for the most current information. Every precaution has been taken in preparing this sheet. Merit Brass Company cannot be held responsible for omissions or typographical errors. \*Conforms with lead content requirements for lead-free plumbing as defined by the U.S. Safe Drinking Water Act. Certified <=0.25 weighted average % lead.

# CopperPress™ Submittal

By Merit Brass Co.



## XL Press Male Adapter



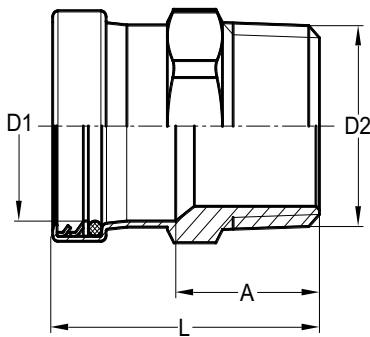
<b>Job Name</b>	
<b>Job Location</b>	
<b>P.O.#</b>	
<b>Engineer</b>	
<b>Contractor</b>	
<b>Wholesaler</b>	
<b>Merit Associate</b>	

**CopperPress™ XL Press Male Adapter** is available in sizes 2-1/2" - 4" and is made of lead-free\* dezincification resistant copper with an EPDM or HNBR o-ring. **CopperPress™** fittings are designed to be used with ASTM B88 Type K, L, and M 1/2" - 2" copper tubing in the hard-drawn condition and soft copper tubing in sizes 1/2" - 1 1/4".

- **Visually Indicates Pressed Ring (VIPR)** - facilitates immediate identification of un-pressed connections
- **Leak Before Press (LBP)** - in addition to the VIPR, all sizes have leak before press technology, which guarantees a visual indication if the fitting is not pressed; 1/2" has a 3 path LBP system and 3/4" & up have a 4 path LBP system
- **Permanent Application Marking** - imprinted on fitting body for quick H<sub>2</sub>O or gas application identification
- **Lead-Free\* Construction** - fully compliant with current lead-free laws
- **Copper Ends** - protect against dezincification and stress corrosion cracking

**Operational Parameters:** Operating/Test Pressure = 300 PSI/600 PSI, Temperature Range 0°F - 250°F

**Approvals:** NSF ANSI/CAN 61, UPC, cUPC, IPC, IAPMO PS-117, ICC-ES-PMG, ASME B16.51



Part Number	D1 (in)	D2 (in)	L (in)	A (in)
MB22510	2-1/2	2-1/2 MPT	3.78	2.05
MB22520	3	3 MPT	4.09	2.09
MB22530	4	4 MPT	4.69	2.28

Merit Brass Company reserves the right to change any portion of the information shown on this sheet without obligation to change our press fitting line, CopperPress™, by Merit Brass Co. previously or subsequently sold. Visit [www.meritbrass.com/pressfitg](http://www.meritbrass.com/pressfitg) for the most current information. Every precaution has been taken in preparing this sheet. Merit Brass Company cannot be held responsible for omissions or typographical errors.

\*Conforms with lead content requirements for lead-free plumbing as defined by the U.S. Safe Drinking Water Act. Certified <=0.25 weighted average % lead.

Find us in  
**MasterSpec®**  
Powered by Deltek Specpoint®

# CopperPress™ Submittal

By Merit Brass Co.



## XL Press Tee Female Reducer P x P x FPT

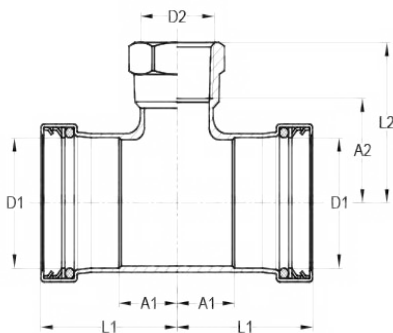
<b>Job Name</b>	
<b>Job Location</b>	
<b>P.O.#</b>	
<b>Engineer</b>	
<b>Contractor</b>	
<b>Wholesaler</b>	
<b>Merit Associate</b>	

**CopperPress™ XL Press Tee Female Reducer P x P x FPT** is available in sizes 2-1/2" - 4" and is made of lead-free\* dezincification resistant copper with an EPDM or HNBR o-ring. **CopperPress™** fittings are designed to be used with ASTM B88 Type K, L, and M copper tubing in the hard-drawn condition.

- **Visually Indicates Pressed Ring (VIPR)** - facilitates immediate identification of un-pressed connections
- **Leak Before Press (LBP)** - in addition to the VIPR, all sizes have leak before press technology, which guarantees a visual indication if the fitting is not pressed; 1/2" has a 3 path LBP system and 3/4" & up have a 4 path LBP system
- **Permanent Application Marking** - imprinted on fitting body for quick H<sub>2</sub>O or gas application identification
- **Lead-Free\* Construction** - fully compliant with current lead-free laws
- **Copper Ends** - protect against dezincification and stress corrosion cracking

**Operational Parameters:** Operating/Test Pressure = 300 PSI/600 PSI, Temperature Range 0°F - 250°F

**Approvals:** NSF ANSI/CAN 61, UPC, cUPC, IPC, IAPMO PS-117, ICC-ES-PMG, ASME B16.51



Part Number	D1 (in)	D2 (in)	L1 (in)	A1 (in)	L2 (in)	A2 (in)
MB42000	2-1/2	3/4 MPT	3.25	1.52	3.50	2.87
MB42010	2-1/2	2 FPT	3.25	1.52	3.43	2.48
MB42030	3	3/4 FPT	3.64	1.63	4.02	3.39
MB42040	3	2 FPT	3.64	1.63	3.58	2.64
MB42050	4	3/4 FPT	4.02	1.61	3.90	3.27
MB42060	4	2 FPT	4.02	1.61	3.70	2.76

Merit Brass Company reserves the right to change any portion of the information shown on this sheet without obligation to change our press fitting line, CopperPress™, by Merit Brass Co. previously or subsequently sold. Visit [www.meritbrass.com/pressftg](http://www.meritbrass.com/pressftg) for the most current information. Every precaution has been taken in preparing this sheet. Merit Brass Company cannot be held responsible for omissions or typographical errors. \*Conforms with lead content requirements for lead-free plumbing as defined by the U.S. Safe Drinking Water Act. Certified <=0.25 weighted average % lead.

Find us in

**MasterSpec®**

Powered by Deltek Specpoint®

# CopperPress™ Submittal

By Merit Brass Co.



## XL Press Unequal Tee



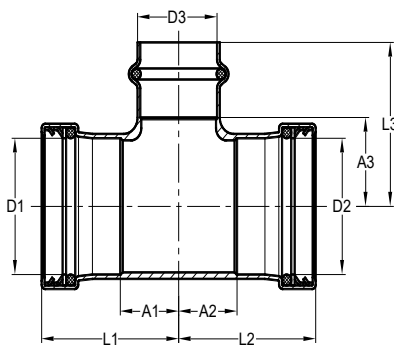
<b>Job Name</b>	
<b>Job Location</b>	
<b>P.O.#</b>	
<b>Engineer</b>	
<b>Contractor</b>	
<b>Wholesaler</b>	
<b>Merit Associate</b>	

**CopperPress™ XL Press Unequal Tee** is available in sizes 2-1/2" - 4" and is made of lead-free\* dezincification resistant copper with an EPDM or HNBR o-ring. **CopperPress™** fittings are designed to be used with ASTM B88 Type K, L, and M copper tubing in the hard-drawn condition.

- **Visually Indicates Pressed Ring (VIPR)** - facilitates immediate identification of un-pressed connections
- **Leak Before Press (LBP)** - in addition to the VIPR, all sizes have leak before press technology, which guarantees a visual indication if the fitting is not pressed; 1/2" has a 3 path LBP system and 3/4" & up have a 4 path LBP system
- **Permanent Application Marking** - imprinted on fitting body for quick H<sub>2</sub>O or gas application identification
- **Lead-Free\* Construction** - fully compliant with current lead-free laws
- **Copper Ends** - protect against dezincification and stress corrosion cracking

**Operational Parameters:** Operating/Test Pressure = 300 PSI/600 PSI, Temperature Range 0°F - 250°F

**Approvals:** NSF ANSI/CAN 61, UPC, cUPC, IPC, IAPMO PS-117, ICC-ES-PMG, ASME B16.51



Part Number	D1 (in)	D2 (in)	D3 (in)	L1 (in)	A1 (in)	L2 (in)	A2 (in)	L3 (in)	A3 (in)
MB24110	2-1/2	3/4	2-1/2	3.56	1.83	4.17	3.23	3.66	1.93
MB24120	2-1/2	1	2-1/2	3.56	1.83	4.19	3.25	3.60	1.87
MB24130	2-1/2	1-1/4	2-1/2	3.56	1.83	4.35	3.21	3.60	1.87
MB24140	2-1/2	1-1/2	2-1/2	3.56	1.83	4.61	3.15	3.60	1.87
MB24150	2-1/2	2	3/4	3.25	1.52	3.72	2.11	3.74	2.80
MB24160	2-1/2	2	1	3.25	1.52	3.72	2.11	3.54	2.60
MB24165	2-1/2	2	1-1/4	3.25	1.52	3.72	2.11	3.58	2.44
MB24170	2-1/2	2	1-1/2	3.25	1.52	3.72	2.11	3.74	2.28
MB24180	2-1/2	2	2	3.25	1.52	3.72	2.11	3.43	1.81
MB24190	2-1/2	2	2-1/2	3.56	1.83	3.56	1.95	3.66	1.93
MB24200	2-1/2	2-1/2	1/2	3.25	1.52	3.25	1.52	3.66	2.85
MB24210	2-1/2	2-1/2	3/4	3.25	1.52	3.25	1.52	3.70	2.76
MB24220	2-1/2	2-1/2	1	3.25	1.52	3.25	1.52	3.58	2.64
MB24230	2-1/2	2-1/2	1-1/4	3.25	1.52	3.25	1.52	3.58	2.44
MB24240	2-1/2	2-1/2	1-1/2	3.25	1.52	3.25	1.52	3.74	2.28
MB24250	2-1/2	2-1/2	2	3.25	1.52	3.25	1.52	3.43	1.81

Find us in  
**MasterSpec®**  
Powered by Deltek Specpoint®

Merit Brass Company reserves the right to change any portion of the information shown on this sheet without obligation to change our press fitting line, CopperPress™, by Merit Brass Co. previously or subsequently sold. Visit [www.meritbrass.com/pressfitg](http://www.meritbrass.com/pressfitg) for the most current information. Every precaution has been taken in preparing this sheet. Merit Brass Company cannot be held responsible for omissions or typographical errors. \*Conforms with lead content requirements for lead-free plumbing as defined by the U.S. Safe Drinking Water Act. Certified <=0.25 weighted average % lead.

# CopperPress™ Submittal

By Merit Brass Co.



DIRECTING THE FLOW OF *Quality*

## XL Press Unequal Tee

Part Number	D1 (in)	D2 (in)	D3 (in)	L1 (in)	A1 (in)	L2 (in)	A2 (in)	L3 (in)	A3 (in)
MB24270	3	3/4	3	4.11	2.11	5.10	4.15	4.31	2.30
MB24280	3	1	3	4.11	2.11	4.92	3.98	4.31	2.30
MB24290	3	1-1/4	3	4.11	2.11	5.02	3.88	4.31	2.30
MB24300	3	1-1/2	3	4.11	2.11	5.10	3.64	4.31	2.30
MB24310	3	2	2	3.64	1.63	4.35	2.74	3.76	2.15
MB24320	3	2	2-1/2	3.98	1.97	4.69	3.07	4.00	2.26
MB24330	3	2	3	4.11	2.11	4.55	2.93	4.31	2.30
MB24340	3	2-1/2	2	3.64	1.63	4.15	2.42	3.76	2.15
MB24350	3	2-1/2	2-1/2	3.98	1.97	4.49	2.76	4.00	2.26
MB24360	3	2-1/2	3	4.11	2.11	4.74	3.01	4.31	2.30
MB24370	3	3	1/2	3.64	1.63	3.64	1.63	4.07	3.27
MB24380	3	3	3/4	3.64	1.63	3.64	1.63	4.15	3.21
MB24390	3	3	1	3.64	1.63	3.64	1.63	3.96	3.01
MB24400	3	3	1-1/4	3.64	1.63	3.64	1.63	4.07	2.93
MB24410	3	3	1-1/2	3.64	1.63	3.64	1.63	4.31	2.85
MB24420	3	3	2	3.64	1.63	3.64	1.63	3.76	2.15
MB24430	3	3	2-1/2	3.98	1.97	3.98	1.97	4.00	2.26
MB24450	4	3	2	4.02	1.61	4.80	2.80	3.25	1.63
MB24460	4	3	3	4.51	2.11	4.82	2.81	4.63	2.62
MB24470	4	4	1/2	4.02	1.61	4.02	1.61	4.63	3.82
MB24480	4	4	3/4	4.02	1.61	4.02	1.61	4.59	3.64
MB24490	4	4	1	4.02	1.61	4.02	1.61	4.43	3.48
MB24500	4	4	1-1/4	4.02	1.61	4.02	1.61	4.43	3.29
MB24510	4	4	1-1/2	4.02	1.61	4.02	1.61	4.59	3.13
MB24520	4	4	2	4.02	1.61	4.02	1.61	4.23	2.62
MB24530	4	4	2-1/2	4.17	1.77	4.17	1.77	4.47	2.74
MB24540	4	4	3	4.51	2.11	4.51	2.11	4.59	2.58

Find us in

**MasterSpec®**

Powered by Deltek Specpoint®