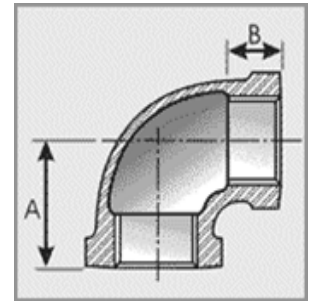


DIMENSIONAL SPECIFICATIONS

LEAD-FREE IMPORT BRASS FITTINGS* 250 LB.

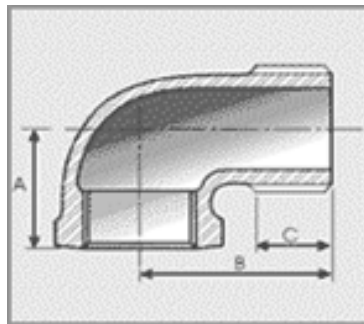
90 DEGREE ELBOW

Part #	Size (IN.)	Approx. Net WT. (LB.)	A	B
XNL150-04	1/4	0.16	0.81	0.32
XNL150-06	3/8	0.26	0.95	0.36
XNL150-08	1/2	0.43	1.12	0.43
XNL150-12	3/4	0.67	1.31	0.50
XNL150-16	1	1.05	1.50	0.58
XNL150-24	1-1/2	2.15	1.94	0.70
XNL150-32	2	3.52	2.25	0.75



90 DEGREE STREET ELBOW

Part #	Size	Approx. Net WT. (LB.)	A	B	C
XNL160-04	1/4	0.07	0.81	1.11	0.40
XNL160-12	3/4	0.56	1.31	1.69	0.55
XNL160-16	1	0.89	1.50	1.98	0.68



*Conforms with lead content requirements for lead-free plumbing as defined by the U.S. Safe Drinking Water Act. Certified <0.25 weighted average % lead.

MERIT BRASS

DIRECTING THE FLOW OF *Quality*

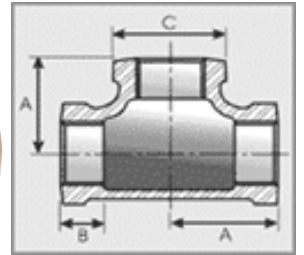
DIMENSIONAL SPECIFICATIONS

LEAD-FREE IMPORT BRASS FITTINGS* 250 LB.



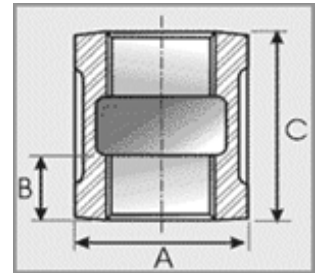
TEE

Part #	Size (IN.)	Approx. Net WT. (LB.)	A	B	C
XNL153-04	1/4	0.12	0.81	0.38	0.93
XNL153-08	1/2	0.61	1.12	1.34	0.50
XNL153-12	3/4	0.97	1.31	1.63	0.56
XNL153-16	1	1.47	1.50	1.95	0.62
XNL153-24	1-1/2	3.01	1.94	2.68	0.75



COUPLING

Part #	Size (IN.)	Approx. Net WT. (LB.)	A	B
XNL157-04	1/4	0.13	0.32	1.06
XNL157-32	2	2.73	0.70	2.54



*Conforms with lead content requirements for lead-free plumbing as defined by the U.S. Safe Drinking Water Act. Certified <0.25 weighted average % lead.



MERIT BRASS

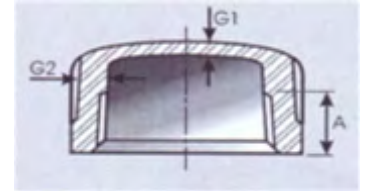
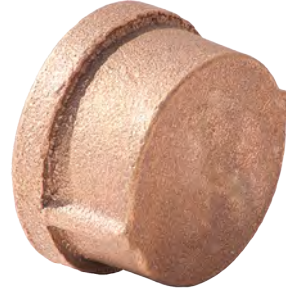
DIRECTING THE FLOW OF *Quality*

DIMENSIONAL SPECIFICATIONS

LEAD-FREE IMPORT BRASS FITTINGS* 250 LB.

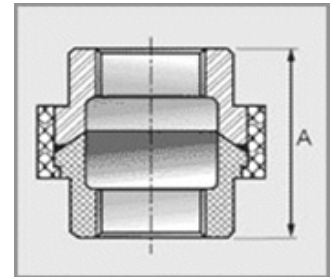
CAP

Part #	Size (IN.)	Approx. Net WT. (LB.)	A	B
XNL158-16	1	0.54	0.58	1.10



UNION

Part #	Size (IN.)	Approx. Net WT. (LB.)	A
XNL190-04	1/4	0.16	1.56
XNL190-08	1/2	0.62	2.00
XNL190-12	3/4	1.06	2.13
XNL190-16	1	1.40	2.44
XNL190-24	1-1/2	2.94	2.81
XNL190-32	2	3.42	3.19



*Conforms with lead content requirements for lead-free plumbing as defined by the U.S. Safe Drinking Water Act. Certified <0.25 weighted average % lead.



MERIT BRASS

DIRECTING THE FLOW OF *Quality*