

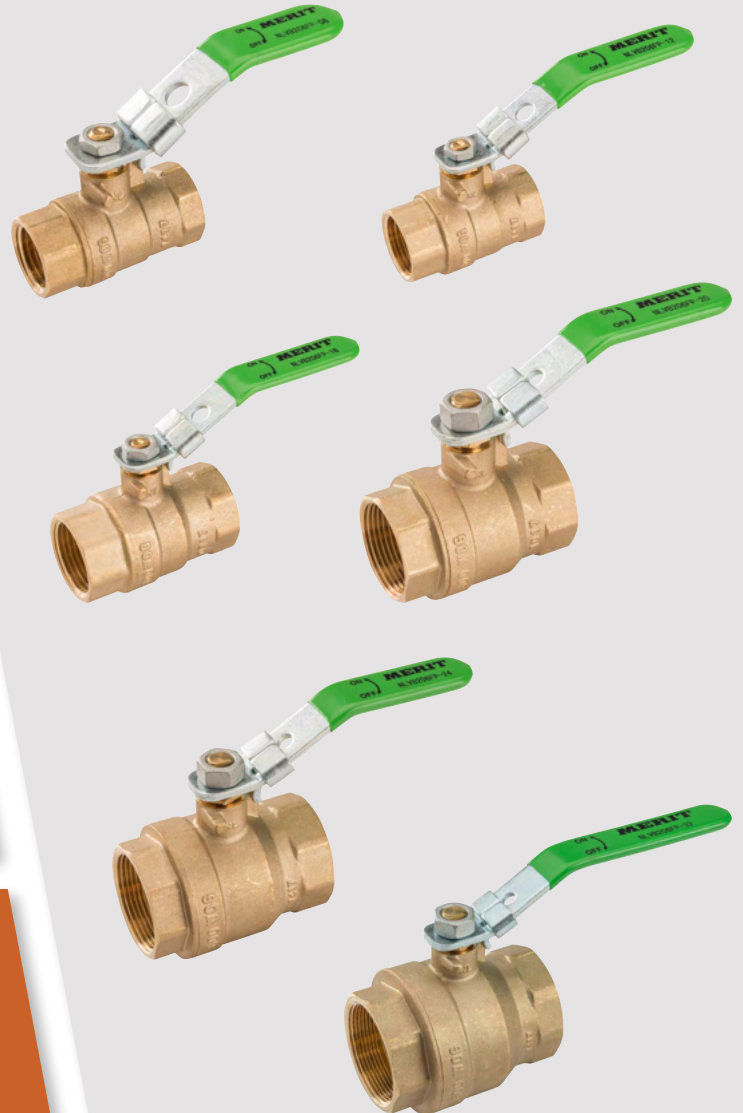
Submittal Sheet

LEAD-FREE BRASS BALL VALVES

Threaded Ends ANSI B1.20.1

Conforms to MSS-SP-110

NSF61 and ANSI 372 Approved



LEARN MORE



800.726.9800

Follow us on      

www.meritbrass.com
www.mbwebxpress.com
contactus@meritbrass.com

Merit Brass Headquarters Has An ISO 9001:2015 Registered Quality Management System

LEAD-FREE BRASS BALL VALVE SUBMITTAL

Description



This specification covers lead-free brass ball valves used in process piping applications as determined by Engineering as a function of what is being transported in the system, pressure ratings, temperature of material and line pressure.

Specifications

Lead-free brass ball valves manufactured in 1/4" – 4" by Yorhe in China and furnished by Merit Brass Co. shall conform to MSS-SP-110 and Threaded Ends ANSI B1.20.1.

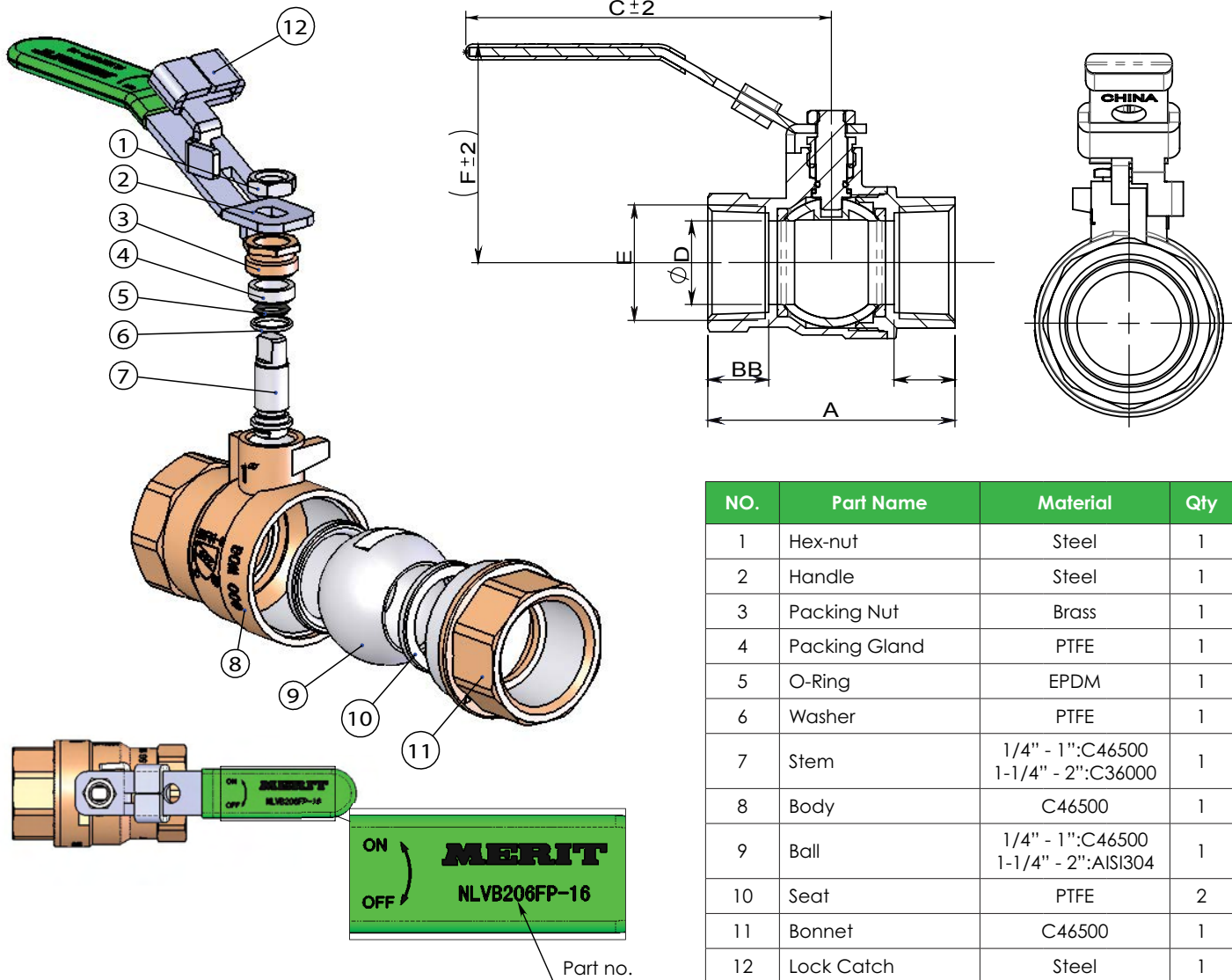
1/4" – 2" Design Features		2-1/2" – 4" Design Features
Body	Forged lead-free brass	Forged lead-free brass
Port	Full	Full
Design	Two Piece Body	Two Piece Body
Handle	Locking Device	Locking Device
Ball	Chrome-plated lead-free brass 1/4" – 1" 304 Stainless steel 1-1/4" – 2"	304 Stainless Steel
Seats	PTFE	PTFE
Stem	Blow-out proof	Blow-out proof
Rated	600 PSI Non-Shock WOG	600 PSI Non-Shock WOG 125 PSI SWP

Project Information	Approval Stamp
Project Name:	Approved
Project Location:	Approved As Noted
Project Contractor:	Not Approved
Project Engineer:	Remarks:
Project Distributor:	
Project Rep:	
Submittal Date:	
Notes 1:	
Notes 2:	

For the Master Carton (Box) Quantity List, please visit meritbrass.com. Some items not shown may be available upon request. Some items and sizes may be discontinued when stock is depleted and may require a minimum order quantity. Certain inventory limitations may apply. For list prices in Excel, please download by logging onto meritbrass.com. Contact our Sales Team for details at sales@meritbrass.com. Every precaution has been taken in preparing this submittal, however, Merit Brass Company cannot be held responsible for typographical errors or omissions. Conforms with lead content requirements for lead-free plumbing as defined by the U.S. Safe Drinking Water Act. Certified <=0.25 weighted average % lead.

LEAD-FREE BRASS BALL VALVE SUBMITTAL

Dimensions 1/4" – 2"

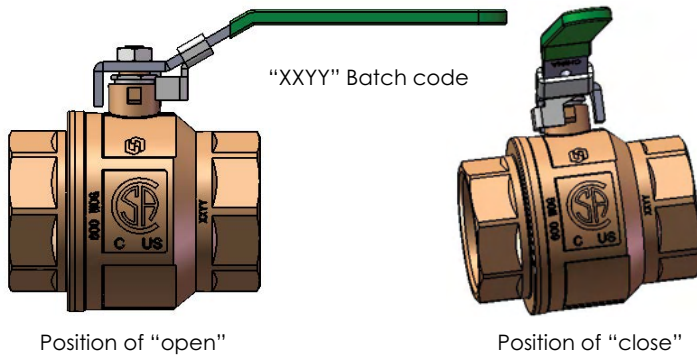
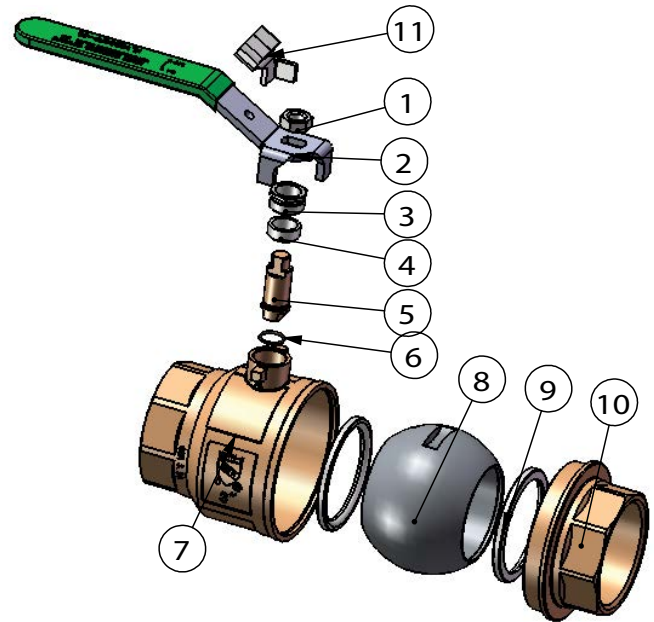
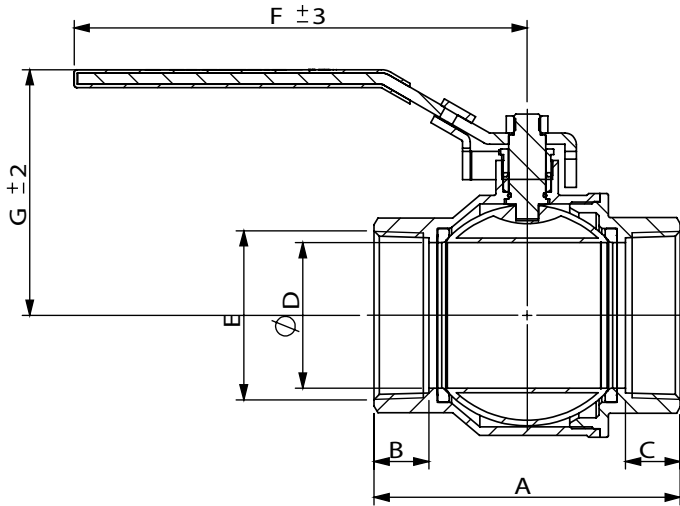


NO.	Part Name	Material	Qty
1	Hex-nut	Steel	1
2	Handle	Steel	1
3	Packing Nut	Brass	1
4	Packing Gland	PTFE	1
5	O-Ring	EPDM	1
6	Washer	PTFE	1
7	Stem	1/4" - 1":C46500 1-1/4" - 2":C36000	1
8	Body	C46500	1
9	Ball	1/4" - 1":C46500 1-1/4" - 2":AISI304	1
10	Seat	PTFE	2
11	Bonnet	C46500	1
12	Lock Catch	Steel	1

Size	A (in)	B (in)	C (in)	D (in)	E	F (in)	Weight (Lb)	Part No.
1/4"	1.732	0.453	3.15	∅ 0.394	1/4-18NPT	1.843	0.26	NLVB206FP-04
3/8"	1.732	0.453	3.15	∅ 0.394	3/8-18NPT	1.843	0.26	NLVB206FP-06
1/2"	2.047	0.551	3.15	∅ 0.512	1/2-14NPT	1.937	0.37	NLVB206FP-08
3/4"	2.303	0.571	4.134	∅ 0.709	3/4-14NPT	2.291	0.55	NLVB206FP-12
1"	2.795	0.689	4.134	∅ 0.945	1-11.5NPT	2.469	0.88	NLVB206FP-16
1-1/4"	3.15	0.689	4.921	∅ 1.201	1 1/4-11.5NPT	3.039	1.36	NLVB206FP-20
1-1/2"	3.504	0.709	4.921	∅ 1.457	1 1/2-11.5NPT	3.217	1.88	NLVB206FP-24
2"	4.193	0.748	7.087	∅ 1.949	2-11.5NPT	3.72	3.44	NLVB206FP-32

LEAD-FREE BRASS BALL VALVE SUBMITTAL

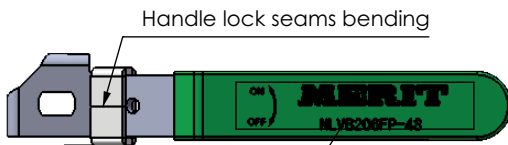
Dimensions 2-1/2" – 4"



"XXYY" Batch code

Position of "open"

Position of "close"



Handle lock seams bending



Part no.

NO.	Part Name	Material	Qty
1	Hex-nut	Steel	1
2	Handle	Steel	1
3	Packing Nut	Brass	1
4	Packing Gland	PTFE	1
5	Stem	C3600	1
6	O-Ring	EPDM	1
7	Body	C46500	1
8	Ball	Stainless Steel	1
9	Seat	PTFE	1
10	Bonnet	C46500	1
11	Lock Catch	Steel	1

Size	A (in)	B (in)	C (in)	D (in)	E	F (in)	G (in)	Weight (Lb)	Part No.
2-1/2"	5.551	1.063	1.063	∅ 0.25	2 1/2-8NPT	9.449	4.744	7.32	NLVB206FP-40
3"	6.378	1.142	1.142	∅ 3.031	3-8NPT	9.449	5.118	10.11	NLVB206FP-48
4"	7.543	1.201	1.201	∅ 3.937	4-8NPT	9.449	5.866	16.91	NLVB206FP-64

LOCATIONS

SPARKS DISTRIBUTION CENTER
200 Vista Boulevard Suite #106
Sparks, NV 89434

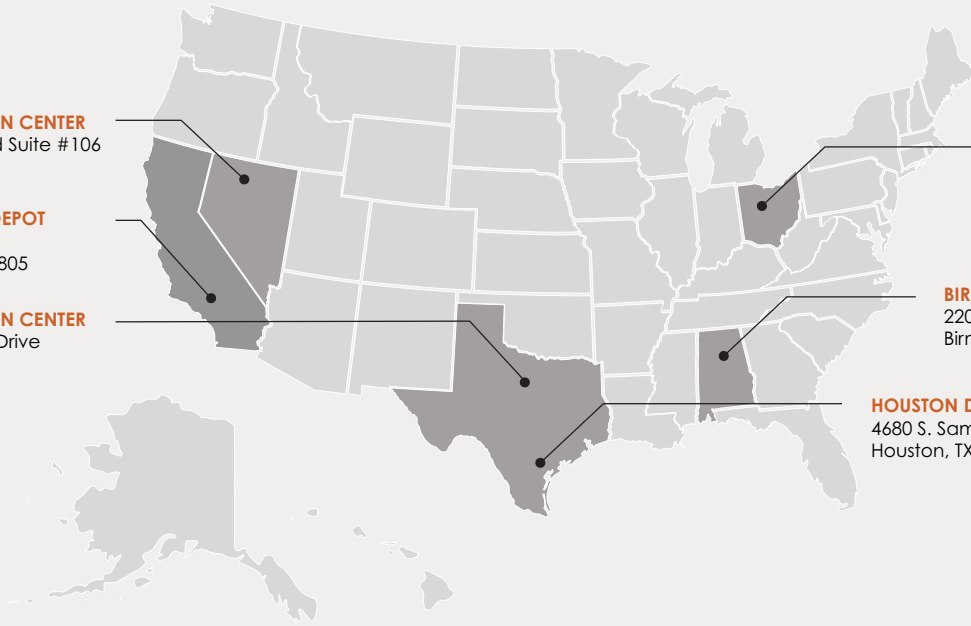
LONG BEACH PIPE DEPOT
2396 E. Artesia Blvd
Long Beach, CA 90805

DALLAS DISTRIBUTION CENTER
10614 King William Drive
Dallas, TX 75220

CLEVELAND HEADQUARTERS
One Merit Drive/PO Box 43127
Cleveland, OH 44143

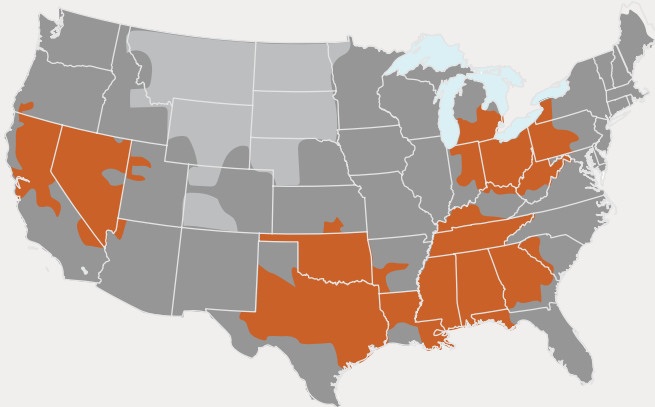
BIRMINGHAM DISTRIBUTION CENTER
220 Oxmoor Court
Birmingham, AL 35209

HOUSTON DISTRIBUTION CENTER
4680 S. Sam Houston Pkwy W, Suite 120
Houston, TX 77053



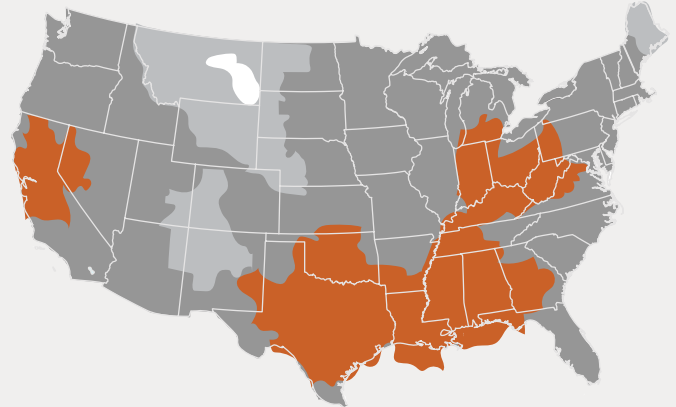
SHIPPING TIMES

UPS



1 Day 2 Days 3 Days

FedEx



1 Day 2 Days 3 Days 4 Days

*FedEx is Merit's Primary Carrier

LEARN MORE



800.726.9800

Follow us on

Merit Brass Headquarters Has An ISO 9001:2015 Registered Quality Management System

www.meritbrass.com
www.mbwebxpress.com
contactus@meritbrass.com