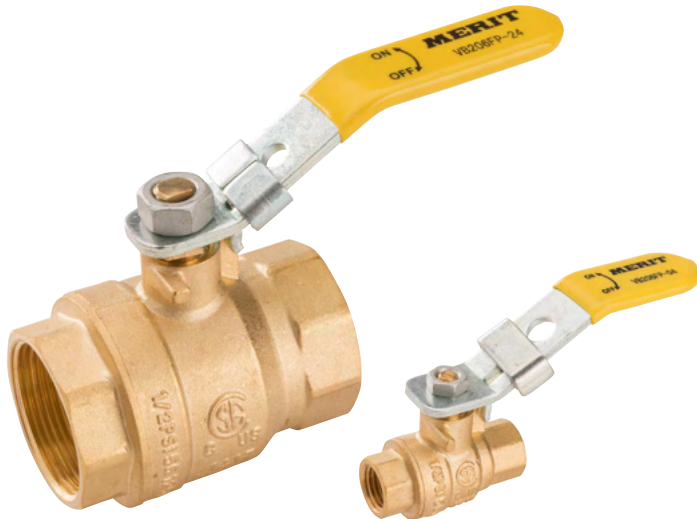


LEADED BRASS BALL VALVES

Diameters: 1/4" – 2"

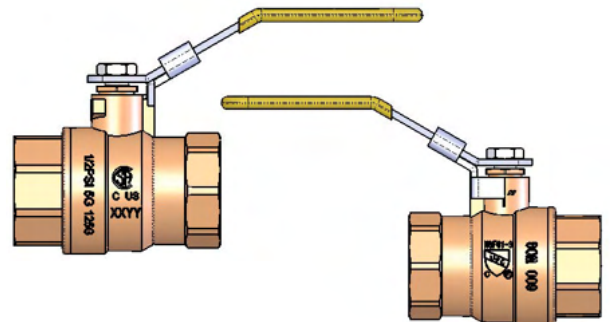
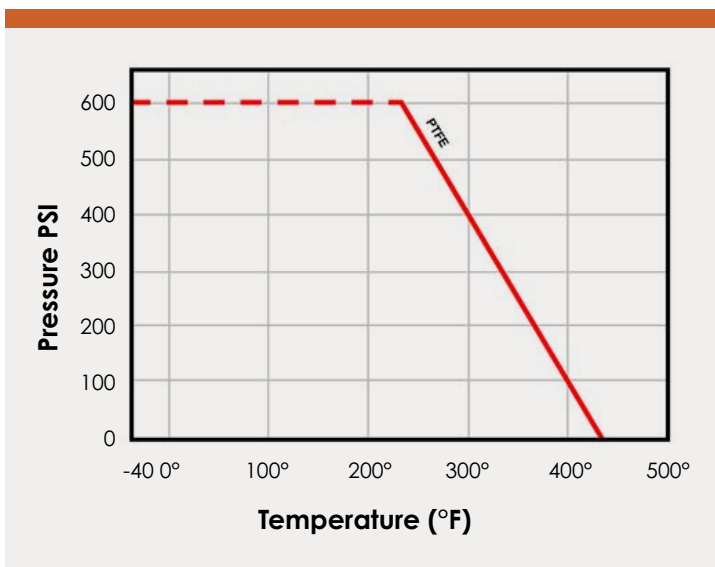


Design Features

- Body: Forged Brass
- Port: Full
- Design: Two Piece Body
- Handle: Locking Device
- Ball: Chrome Plated Brass
- Seats: PTFE
- Stem: Blow-Out Proof
- 1/4" – 2" Rated: 600PSI Non-Shock WOG
125PSI SWP

Applicable Standards

- Threaded Ends ANSI B1.20.1
- Conforms to MSS-SP-110
- CSA Gas Approved to 2" (IPS Only)



⚠ WARNING: This product can expose you to Lead, which is known to the State of California to cause cancer and birth defects or other reproductive harm. For more information go to www.P65Warnings.ca.gov. This product is not for use in potable water.

LEARN MORE



800.726.9800

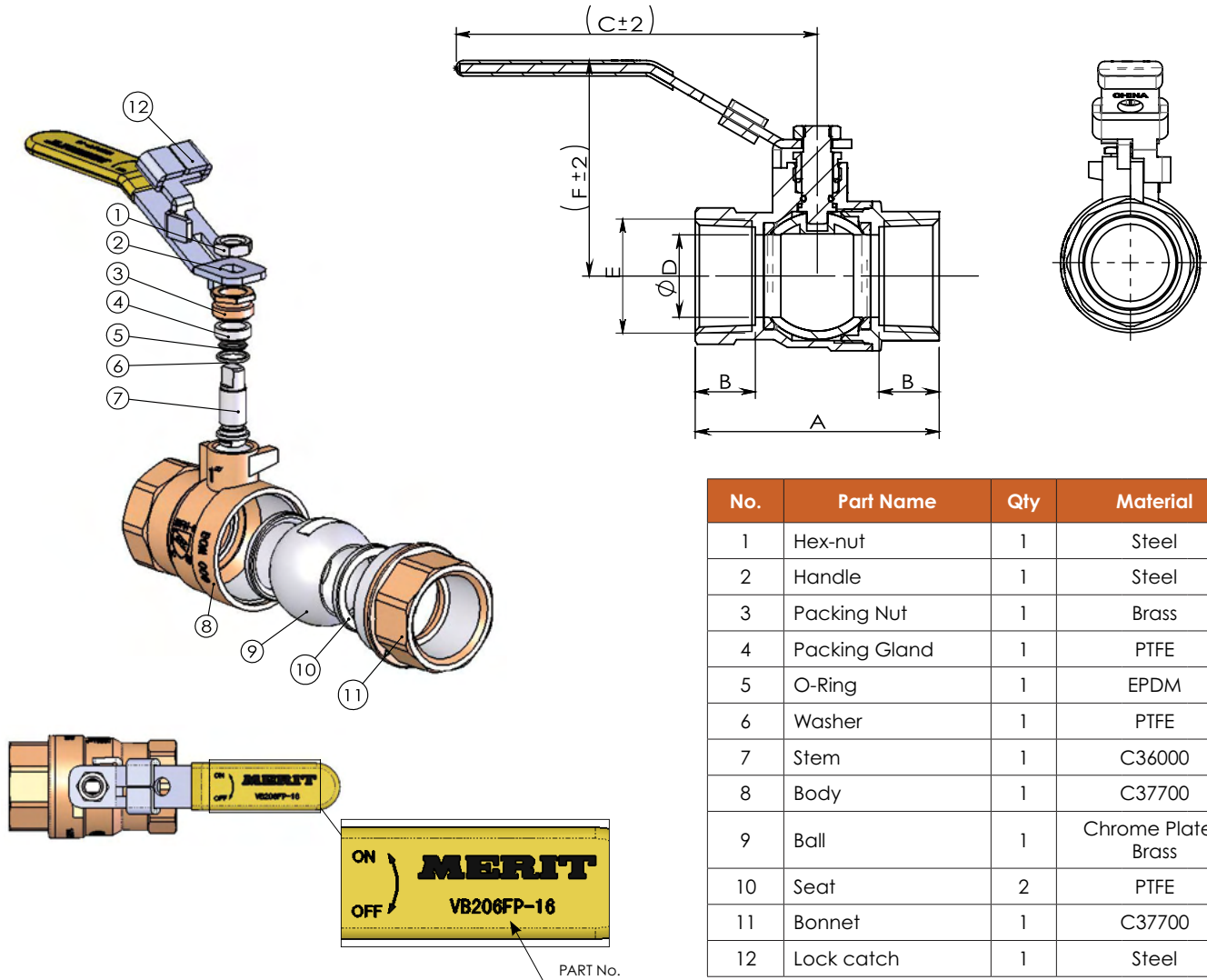
Follow us on [f](#) [X](#) [in](#) [@](#) [v](#) [p](#)

Headquarters: One Merit Drive, PO Box 43127, Cleveland, OH 44143

www.meritbrass.com
www.mbwebxpress.com
contactus@meritbrass.com

LEADED BRASS BALL VALVES

Diameters: 1/4" - 2"



No.	Part Name	Qty	Material
1	Hex-nut	1	Steel
2	Handle	1	Steel
3	Packing Nut	1	Brass
4	Packing Gland	1	PTFE
5	O-Ring	1	EPDM
6	Washer	1	PTFE
7	Stem	1	C36000
8	Body	1	C37700
9	Ball	1	Chrome Plated Brass
10	Seat	2	PTFE
11	Bonnet	1	C37700
12	Lock catch	1	Steel

Size	A (in)	B (in)	C (in)	D (in)	E	F (in)	Weight (lb)	Part No.
1/4"	1.732	0.453	3.15	Ø 0.394	1/4-18NPT	1.843	0.26	VB206FP-04
3/8"	1.732	0.453	3.15	Ø 0.394	3/8-18NPT	1.843	0.26	VB206FP-06
1/2"	2.047	0.551	3.15	Ø 0.512	1/2-14NPT	1.937	0.37	VB206FP-08
3/4"	2.303	0.571	4.134	Ø 0.709	3/4-14NPT	2.291	0.55	VB206FP-12
1"	2.795	0.689	4.134	Ø 0.945	1-11.5NPT	2.469	0.88	VB206FP-16
1-1/4"	3.15	0.689	4.921	Ø 1.201	1 1/4-11.5NPT	3.039	1.36	VB206FP-20
1-1/2"	3.504	0.709	4.921	Ø 1.457	1 1/2-11.5NPT	3.217	1.88	VB206FP-24
2"	4.193	0.748	7.087	Ø 1.949	2-11.5NPT	3.72	3.44	VB206FP-32

LEADED BRASS BALL VALVES

Diameters: 2-1/2" – 4"

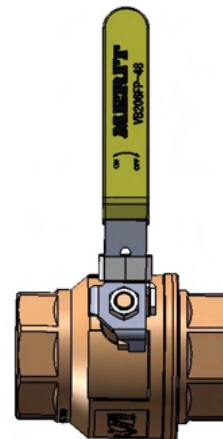
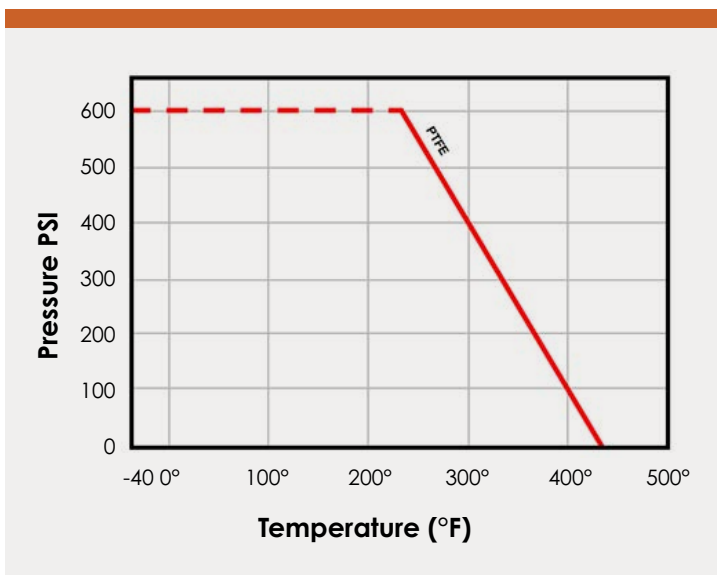


Design Features

- Body: Forged Brass
- Port: Full
- Design: Two Piece Body
- Handle: Locking Device
- Ball: 304 Stainless Steel
- Seats: PTFE
- Stem: Blow-Out Proof
- 2-1/2" – 4" Rated: 600PSI Non-Shock WOG
125PSI SWP

Applicable Standards

- Threaded Ends ANSI B1.20.1
- Conforms to MSS-SP-110
- UL/FM Approved



⚠ WARNING: This product can expose you to Lead, which is known to the State of California to cause cancer and birth defects or other reproductive harm. For more information go to www.P65Warnings.ca.gov. This product is not for use in potable water.

LEARN MORE



800.726.9800

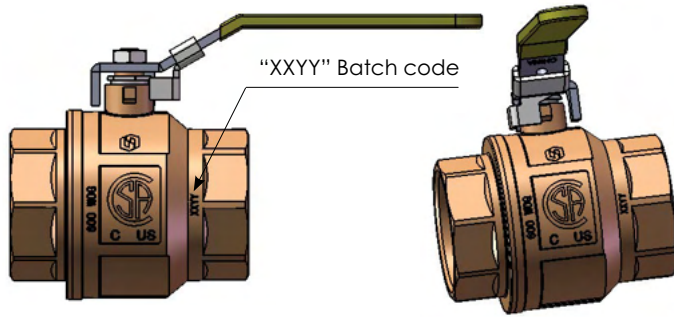
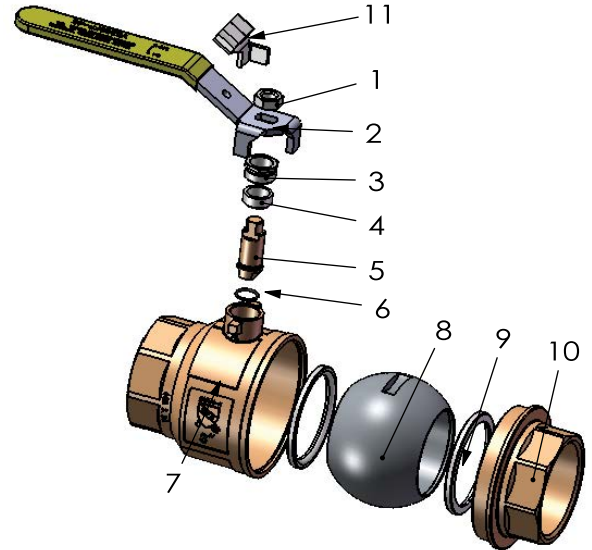
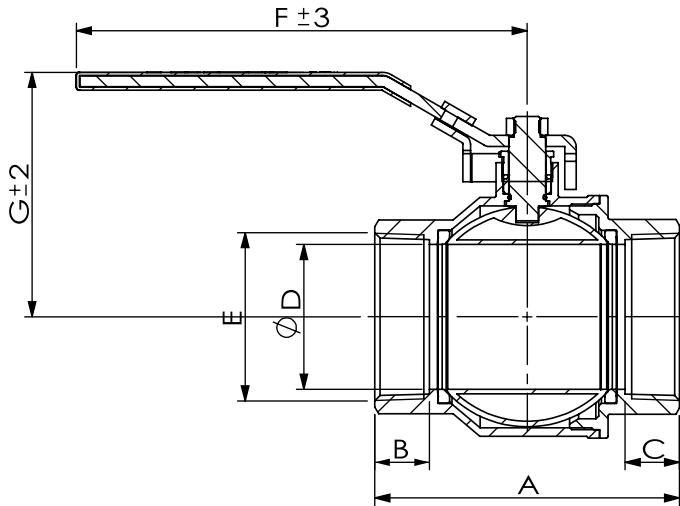
Follow us on [f](#) [X](#) [in](#) [@](#) [v](#) [p](#)

Headquarters: One Merit Drive, PO Box 43127, Cleveland, OH 44143

www.meritbrass.com
www.mbwebxpress.com
contactus@meritbrass.com

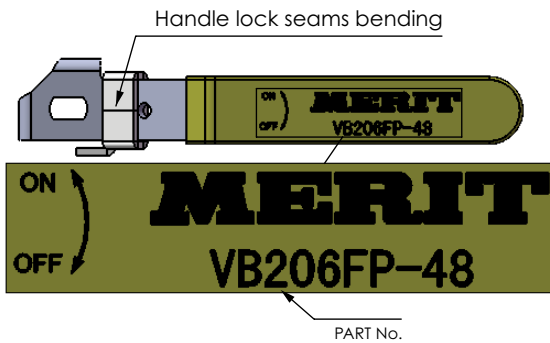
LEADED BRASS BALL VALVES

Diameters: 2-1/2" - 4"



Position of "Open"

Position of "Close"



No.	Part Name	Qty	Material
1	Hex-nut	1	Steel
2	Handle	1	Steel
3	Packing Nut	1	Brass
4	Packing Gland	1	PTFE
5	Stem	1	C3600
6	O-Ring	1	EPDM
7	Body	1	C3770
8	Ball	1	Stainless Steel
9	Seat	2	PTFE
10	Bonnet	1	C3770
11	Lock catch	1	Steel

Size	A (in)	B (in)	C (in)	D (in)	E	F (in)	G (in)	Weight (lb)	Part No.
2-1/2"	5.551	1.063	1.603	Ø 0.25	2 1/2-8NPT	9.449	4.744	7.32	VB206FP-40
3"	6.378	1.142	1.142	Ø 3.031	3-8NPT	9.449	5.118	10.11	VB206FP-48
4"	7.543	1.201	1.201	Ø 3.937	4-8NPT	9.449	5.866	16.91	VB206FP-64