

STAINLESS STEEL VALVES

Stainless Steel ASME Class 150

2-PC Body, Flanged End Ball Valve, Full Port

KFV2015FP



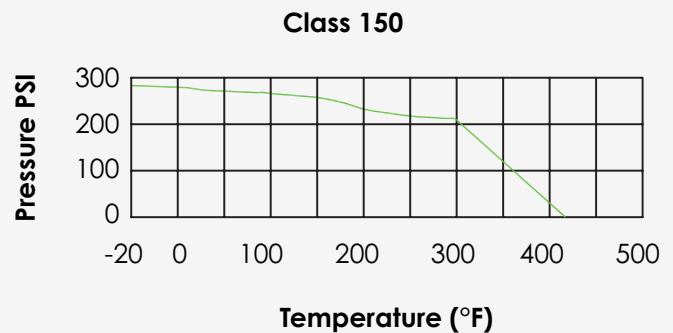
Design Features

- Built-in ISO 5211 Mounting Pad for Easy Automation
- Anti-Static Devices for Ball-Stem-Body
- Blow-out Proof Stem
- Pressure Balance Hole in Ball Slot
- Casting Boss on Body for Draining
- Locking Device is Standard

Applicable Standards

- Design: ASME B16.34, API 608
- Face to Face: ASME B16.10
- Wall Thickness: ASME B16.34
- End Flange: ASME B16.5
- Inspection & Testing: API 598

Size	Cv	Weight (Lbs)	Port	Torque (In-Lbs)
1/2"	18	3.62	0.59	44
3/4"	36	4.48	0.79	53
1"	48	6.40	0.98	89
1-1/4"	72	8.03	1.26	115
1-1/2"	120	12.86	1.50	168
2"	190	18.42	1.97	252
2-1/2"	450	31.51	2.52	398
3"	600	39.87	2.99	637
4"	1100	65.75	3.93	974
6"	2600	161.07	5.90	2708
8"	4200	276.96	7.87	3806



LEARN MORE



800.726.9800

Follow us on [f](#) [X](#) [in](#) [@](#) [v](#) [p](#)

Headquarters: One Merit Drive, PO Box 43127, Cleveland, OH 44143

www.meritbrass.com
www.mbwebxpress.com
contactus@meritbrass.com

STAINLESS STEEL VALVES

Stainless Steel ASME Class 300

2-PC Body, Flanged End Ball Valve, Full Port

KFV203FP



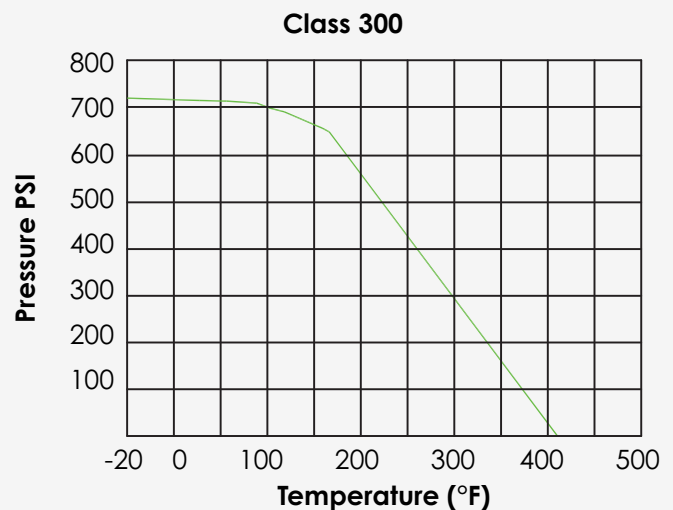
Design Features

- Built-in ISO 5211 Mounting Pad for Easy Automation
- Anti-Static Devices for Ball-Stem-Body
- Blow-out Proof Stem
- Pressure Balance Hole in Ball Slot
- Casting Boss on Body for Draining
- Locking Device is Standard

Applicable Standards

- Design: ASME B16.34, API 608
- Face to Face: ASME B16.10
- Wall Thickness: ASME B16.34
- End Flange: ASME B16.5
- Inspection & Testing: API 598

Size	Cv	Weight (Lbs)	Port	Torque (In-Lbs)
1/2"	18	5.27	0.59	44
3/4"	36	7.52	0.79	53
1"	48	10.81	0.98	89
1-1/4"	72	10.99	1.26	115
1-1/2"	120	18.31	1.50	168
2"	190	22.86	1.97	252
2-1/2"	450	36.85	2.52	398
3"	600	57.44	2.99	637
4"	1100	93.51	3.93	974
6"	2600	161.08	5.90	2708
8"	4200	318.40	7.87	3806



LEARN MORE



800.726.9800

Follow us on [f](#) [X](#) [in](#) [@](#) [v](#) [p](#)

Headquarters: One Merit Drive, PO Box 43127, Cleveland, OH 44143

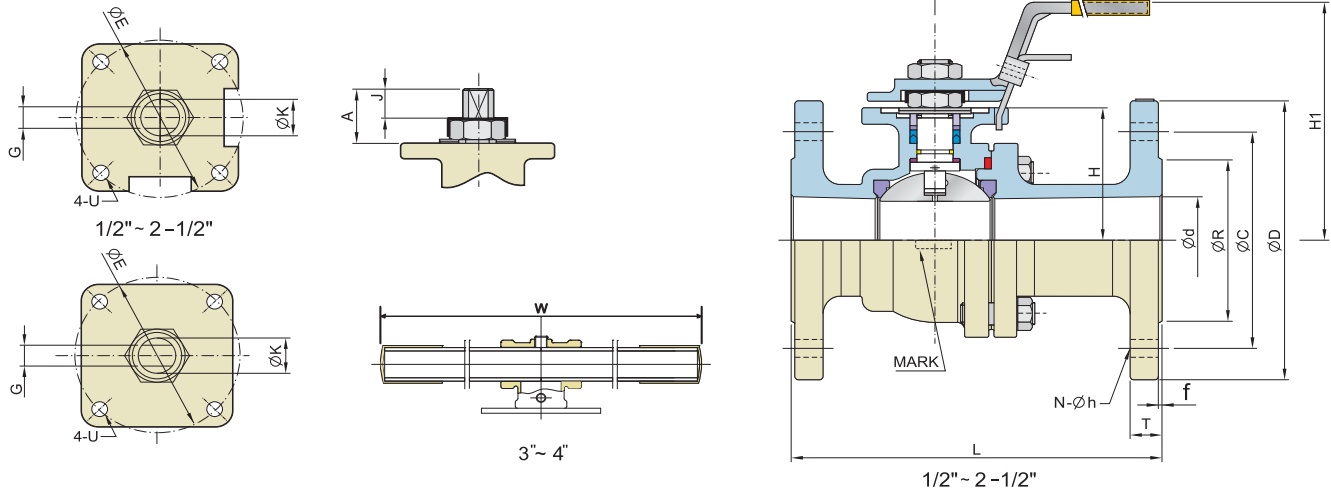
www.meritbrass.com
www.mbwebxpress.com
contactus@meritbrass.com

STAINLESS STEEL VALVES

Stainless Steel ASME Class 150/300

2-PC Body, Flanged End Ball Valve, Full Port

KFV2015FP/KFV203FP



ASME Class 150 – KFV2015FP

Unit: Inch

Size	Port	L	ØR	ØD	ØC	f	T	H	H1	N	Øh	W	G	A	J	ØK	U	ØE	ISO5211
1/2"	0.59	4.25	1.38	3.50	2.38	0.08	0.40	1.46	3.38	0.16	0.63	5.31	0.25	0.79	0.39	0.47	M5	1.65	F04
3/4"	0.79	4.60	1.69	3.88	2.75	0.08	0.43	1.57	3.90	0.16	0.63	5.31	0.25	0.79	0.39	0.47	M5	1.65	F04
1"	0.98	5.00	2.01	4.25	3.13	0.08	0.46	1.81	3.90	0.16	0.63	6.69	0.35	0.94	0.43	0.59	M6	1.97	F05
1-1/4"	1.26	5.51	2.50	4.61	3.50	0.08	0.51	1.97	3.98	0.16	0.63	6.69	0.35	0.94	0.43	0.59	M6	1.97	F05
1-1/2"	1.50	6.49	2.88	5.00	3.88	0.08	0.57	2.44	4.64	0.16	0.63	7.87	0.38	1.06	0.63	0.63	M8	2.75	F07
2"	1.97	7.00	3.62	6.00	4.75	0.08	0.64	2.79	5.00	0.16	0.75	7.87	0.38	1.06	0.63	0.63	M8	2.75	F07
2-1/2"	2.52	7.48	4.13	7.00	5.50	0.08	0.70	3.50	6.42	0.16	0.75	11.81	0.63	1.67	0.83	0.94	M10	4.01	F10
3"	2.99	7.99	5.00	7.50	6.00	0.08	0.77	3.94	6.79	0.16	0.75	11.81	0.63	1.67	0.83	0.94	M10	4.01	F10
4"	3.93	9.01	6.19	9.01	7.50	0.08	0.96	4.74	8.23	0.32	0.75	15.75	0.71	1.87	0.98	1.14	M10	4.01	F10
6"	5.90	15.50	8.50	11.0	9.50	0.08	1.01	7.99	10.83	0.31	0.88	31.50	1.06	1.06	NA	1.35	M14	4.92	F12
8"	7.87	17.99	10.63	13.5	11.75	0.08	1.14	9.94	12.91	0.31	0.88	31.50	1.06	1.06	NA	1.35	M14	4.92	F12

ASME Class 300 – KFV203FP

Unit: Inch

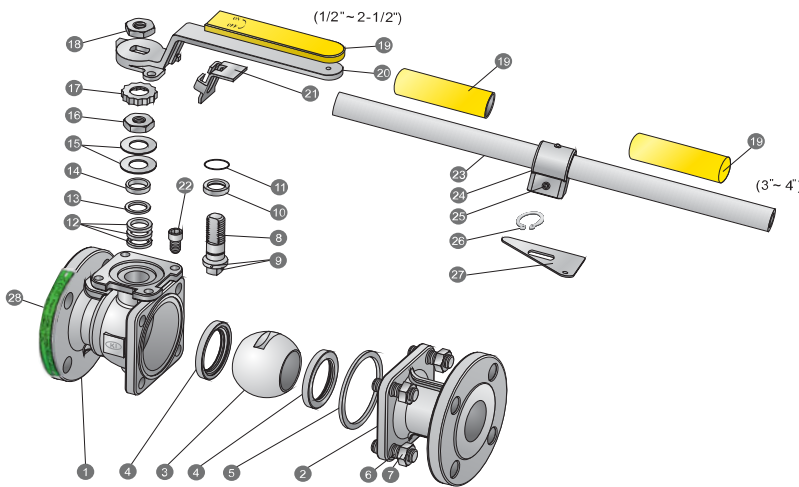
Size	Port	L	ØR	ØD	ØC	f	T	H	H1	N	Øh	W	G	A	J	ØK	U	ØE	ISO5211
1/2"	0.59	5.51	1.38	3.75	2.62	0.08	0.58	1.46	3.38	0.16	0.63	5.31	0.25	0.79	0.39	0.47	M5	1.65	F04
3/4"	0.79	5.98	1.69	4.62	3.25	0.08	0.64	1.57	3.90	0.16	0.75	5.31	0.25	0.79	0.39	0.47	M5	1.65	F04
1"	0.98	6.50	2.01	4.88	3.50	0.08	0.70	1.81	3.90	0.16	0.75	6.69	0.35	0.94	0.43	0.59	M6	1.97	F05
1-1/4"	1.26	7.01	2.50	5.25	3.88	0.08	0.77	1.97	3.98	0.16	0.75	6.69	0.35	0.94	0.43	0.59	M6	1.97	F05
1-1/2"	1.50	7.48	2.88	6.12	4.50	0.08	0.83	2.44	4.64	0.16	0.88	7.87	0.38	1.06	0.63	0.63	M8	2.75	F07
2"	1.97	8.50	3.62	6.50	5.00	0.08	0.89	2.79	5.00	0.32	0.75	7.87	0.38	1.06	0.63	0.63	M8	2.75	F07
2-1/2"	2.52	9.49	4.13	7.50	5.88	0.08	1.02	3.50	6.42	0.32	0.88	11.81	0.63	1.67	0.83	0.94	M10	4.01	F10
3"	2.99	11.10	5.00	8.27	6.61	0.08	1.14	3.94	6.79	0.32	0.88	11.81	0.63	1.67	0.83	0.94	M10	4.01	F10
4"	3.93	12.01	6.19	10.00	7.87	0.08	1.27	4.74	8.23	0.32	0.88	15.75	0.71	1.87	0.98	1.14	M10	4.01	F10
6"	5.90	15.87	8.50	12.50	10.62	0.08	1.46	7.99	10.85	0.47	0.88	31.50	1.06	1.06	NA	1.35	M14	4.92	F12
8"	7.87	19.76	10.63	15.00	13.00	0.08	1.64	9.94	12.91	0.47	1.00	31.50	1.06	1.06	NA	1.35	M14	4.92	F12

STAINLESS STEEL VALVES

Stainless Steel ASME Class 150/300

2-PC Body, Flanged End Ball Valve, Full Port

KFV2015FP/KFV203FP



Available Options

- Other Alloys are Available
- Casting per NACE/MR - 01-75 for Sour Gas Service
- Castings Approved by TÜV AD 2000 - Merkblatt W0 / EN10204 3.2 Form. (EN10204 3.1 Form is free)

Standard	ANSI/ASME	DIN	JIS
Rating	B16.34 Class150 (BS EN ISO17292 Class 150) B16.34 Class 300 (BS EN ISO17292 Class 300)	DIN 3357 PN10 - PN40 EN 12516-1	B2001 10K B2001 20K
Face to Face	B16.10	DIN 3202 F4/F18 DIN 3202 F1/F17 EN 558-1 Series1/ Series27	B2002 10K Form 6 B2002 20K Form 10
Connection Facing	B16.5RF serrated Finish (AARH200)	DIN EN1092-1	B2212 10K B2214 20K
Inspection & Testing	API 598, API 6D	DIN 3230/3, EN 12266	JIS B2003
Quality Assurance	ISO 9001, QS9000 AD 2000 - Merkblatt W0 PED 97/23/EC CE 0036 API 6D		

No.	Part Name	Materials		
		ANSI/JIS/DIN	ANSI/JIS/DIN	ANSI/JIS/DIN
1	Body	A351 - CF8M/SCS14A/1.4408	A351 - CF8/SCS13A/1.4308	A216 - WCB/SCPH2/1.0619
2	End Cap	A351 - CF8M/SCS14A/1.4408	A351 - CF8/SCS13A/1.4308	A216 - WCB/SCPH2/1.0619
3	Ball	A351 - CF8M/SCS14A/1.4408	A351 - CF8/SCS13A/1.4308	
4	Ball Seat	TFM1600/PTFE/RTFE		
5	Body Gasket	PTFE		
6	Bolting	A193-B8		A193-B7
7	Bolt Nut	A194-8		A194-2H
8	Stem	SUS316	SUS304	
9	Antistatic Device	SUS316	SUS304	
10	Thrust Washer	PTFE		
11	O-Ring	FKM (Viton)		
12	Stem Packing	PTFE		
13	Bushing	50% SS+50% PTFE		
14	Gland	SUS316		
15	Belleville Washer	SUS301		
16	Stem Nut	A194-8		
17	Stop-lock-cap	SUS304		
18	Lever Nut (1/2"~2-1/2")	A194-8		
19	Lever Sleeve	Vinyl Plastic		
20	Lever (1/2"~2-1/2")	SUS304		
21	Lock Device (1/2"~2-1/2")	SUS304		
22	Stop Bolt	A193-B8		
23	Pipe Handle (3"~4")	A53+Zn Plated		
24	Handle Adapter (3"~4")	A351-CF8		
25	Set Screw (3"~4")	A193-B8		
26	Snap Ring (3"~4")	SUS304		
27	Triangle Stopper (3"~4")	SUS420		
28	Nameplate	SUS304		

MERIT BRASS

DIRECTING THE FLOW OF *Quality*

VALVES CUT SHEETS



LOCATIONS

CLEVELAND HEADQUARTERS

One Merit Drive/PO Box 43127. Cleveland, OH 44143

BIRMINGHAM DISTRIBUTION CENTER

220 Oxmoor Court. Birmingham, AL 35209

DALLAS DISTRIBUTION CENTER

10614 King William Drive. Dallas, TX 75220

LONG BEACH PIPE DEPOT

2396 E. Artesia Blvd. Long Beach, CA 90805

SPARKS DISTRIBUTION CENTER

200 Vista Boulevard Suite #106. Sparks, NV 89434

HOUSTON DISTRIBUTION CENTER

4680 S. Sam Houston Pkwy W, Suite 120. Houston, TX 77053

LEARN MORE



800.726.9800

Follow us on      

Merit Brass Headquarters Has An ISO 9001:2015 Registered Quality Management System

www.meritbrass.com

www.mbwebxpress.com

contactus@meritbrass.com