

# STAINLESS STEEL VALVES

## Class 200 WOG Stainless Steel Gate Valve Threaded – Full Port, “V” Series

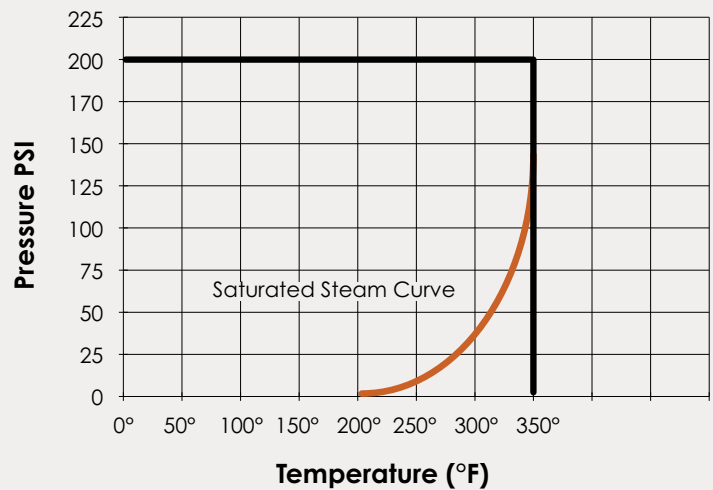
VGT102



### Applicable Standards

- Design: ASME/ANSI B16.34
- Testing: API 598
- 200 PSI Working Pressure at 350°F
- 316 Stainless Steel
- Screwed Bonnet
- Solid Wedge Disc
- Non-Rising Stem
- Hydrostatic Shell Test at 300 PSI
- Hydrostatic Seat Test at 220 PSI
- Threaded Ends

Size	Cv	Weight (Lbs)	Port
1/2"	17.6	0.97	0.59
3/4"	32	1.43	0.79
1"	54	1.75	0.98
1-1/4"	97	2.98	1.26
1-1/2"	130	3.73	1.50
2"	230	5.34	1.97



LEARN MORE



**800.726.9800**

Follow us on [f](#) [X](#) [in](#) [@](#) [v](#) [p](#)

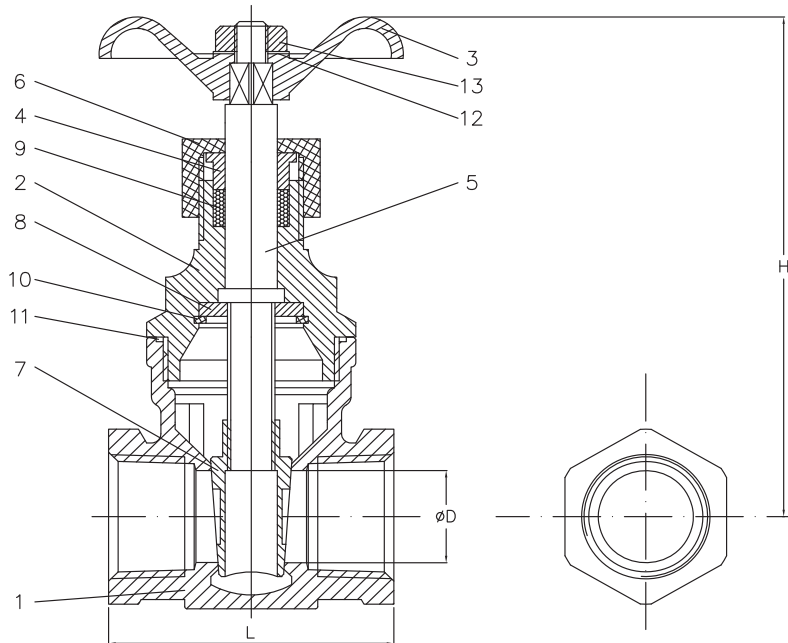
Headquarters: One Merit Drive, PO Box 43127, Cleveland, OH 44143

[www.meritbrass.com](http://www.meritbrass.com)  
[www.mbwebxpress.com](http://www.mbwebxpress.com)  
[contactus@meritbrass.com](mailto:contactus@meritbrass.com)

# STAINLESS STEEL VALVES

## Class 200 WOG Stainless Steel Gate Valve Threaded – Full Port, “V” Series

VGT102



Unit: Inch

No.	Part Name	Qty	Material
1	Body	1	ASTM A351 CF8M
2	Bonnet	1	ASTM A351 CF8M
3	Hand Wheel	1	Aluminum
4	Gland	1	S.S. 316
5	Stem	1	S.S. 316
6	Packing Nut	1	S.S. 304
7	Disc	1	S.S. 316
8	Stem Washer	1	S.S. 316
9	Gland Packing	1	Teflon
10	Snap Ring	1	SUS316
11	Joint Gasket	1	Teflon
12	Name Plate	1	Aluminum
13	Wheel Nut	1	S.S. 304

Size	D Port	L	H
1/2"	0.59	2.17	3.74
3/4"	0.79	2.36	4.33
1"	0.98	2.56	4.72
1-1/4"	1.26	3.15	5.31
1-1/2"	1.50	3.35	5.71
2"	1.97	3.74	6.69