

Pricing Sheet

STAINLESS STEEL PLATE FLANGES

Manufactured from
ASTM A240/SA240
stainless steel plate

Available in 304/L & 316/L
and in size range 1" - 12"

Low carbon to ensure greater
resistance to corrosion



LEARN MORE



800.726.9800

Follow us on      

www.meritbrass.com

www.mbwebxpress.com

contactus@meritbrass.com

FEATURES & BENEFITS

Blind Plate Flange

- Size Range: 1" – 12"
- Manufactured from ASTM A240/SA240 stainless steel plate
- Available in 304/L & 316/L
- Used in low pressure applications to prevent flow and seal the end of a line
- Serrated surface to enhance sealing properties
- Provides for easy expansion of the piping system
- Economical alternative to heavier ANSI flanges
- Low carbon to ensure greater resistance to corrosion



Tube O.D. Slip-On Plate Flange

- Size Range: 1" – 12"
- Manufactured from ASTM A240/SA240 stainless steel plate
- Available in 304/L & 316/L
- Suitable for low pressure, less critical applications
- Serrated surface to enhance sealing properties
- Economical alternative to heavier ANSI flanges
- Low carbon to ensure greater resistance to corrosion



IPS Slip-On Bevel x Square Plate Flange

- Size Range: 1" – 12"
- Manufactured from ASTM A240/SA240 stainless steel plate
- Available in 304/L & 316/L
- Suitable for low pressure, less critical applications
- Serrated surface to enhance sealing properties
- ID beveled on one side to accommodate Type "A" Stub Ends
- Economical alternative to heavier ANSI flanges
- Low carbon to ensure greater resistance to corrosion

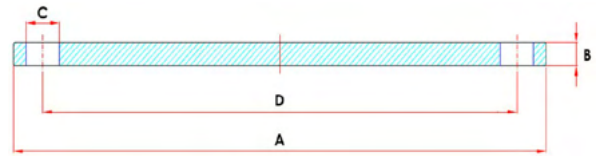


IPS Slip-On Square x Square Plate Flange

- Size Range: 1" – 12"
- Manufactured from ASTM A240/SA240 stainless steel plate
- Available in 304/L & 316/L
- Suitable for low pressure, less critical applications
- Serrated surface to enhance sealing properties
- Economical alternative to heavier ANSI flanges
- Low carbon to ensure greater resistance to corrosion



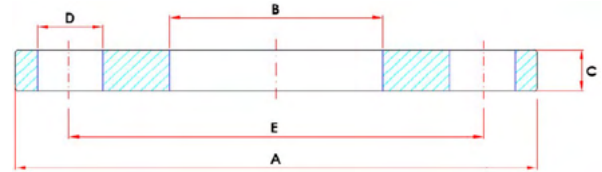
Blind Plate Flange



Please Note: Pictured is a flange with 4 bolt holes. The number of bolt holes change based on the diameter of the flange.

Size (IN)	Part Numbers		Measurements (IN)				Number of Bolt Holes	Weight (LB)
	304	316	A (O.D.)	B (Thickness)	C (Bolt Holes)	D (Bolt Circle)		
1"	AC460BL-16	AC660BL-16	4.25	0.5	0.62	3.12	4	1.96
1¼"	AC460BL-20	AC660BL-20	4.62	0.5	0.62	3.50	4	2.36
1½"	AC460BL-24	AC660BL-24	5.00	0.5	0.62	3.88	4	2.78
2"	AC460BL-32	AC660BL-32	6.00	0.5	0.75	4.75	4	4.01
2½"	AC460BL-40	AC660BL-40	7.00	0.5	0.75	5.50	4	5.56
3"	AC460BL-48	AC660BL-48	7.50	0.5	0.75	6.00	4	6.39
4"	AC460BL-64	AC660BL-64	9.00	0.5	0.75	7.50	8	9.06
5"	AC460BL-80	AC660BL-80	10.00	0.5	0.88	8.50	8	11.13
6"	AC460BL-96	AC660BL-96	11.00	0.5	0.88	9.50	8	13.60
8"	AC460BL-128	AC660BL-128	13.50	0.5	0.88	11.75	8	20.81
10"	AC460BL-160	AC660BL-160	16.00	0.5	1.00	14.25	12	42.75
12"	AC460BL-192	AC660BL-192	19.00	0.5	1.00	17.00	12	61.29

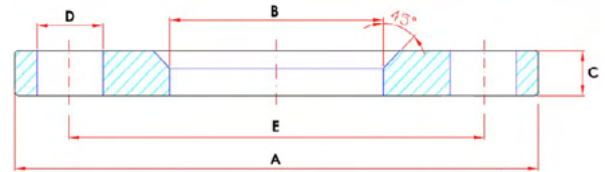
Tube O.D. Slip-On Plate Flange



Please Note: Pictured is a flange with 4 bolt holes. The number of bolt holes change based on the diameter of the flange.

Size (IN)	Part Numbers		Measurements (IN)					Number of Bolt Holes	Weight (LB)
	304	316	A (O.D.)	B (I.D.)	C (Thickness)	D (Bolt Holes)	E (Bolt Circle)		
1"	AC460T-16	AC660T-16	4.25	1.063	0.5	0.62	3.12	4	1.74
1¼"	AC460T-20	AC660T-20	4.62	1.313	0.5	0.62	3.50	4	2.01
1½"	AC460T-24	AC660T-24	5.00	1.563	0.5	0.62	3.88	4	2.34
2"	AC460T-32	AC660T-32	6.00	2.063	0.5	0.75	4.75	4	3.28
2½"	AC460T-40	AC660T-40	7.00	2.563	0.5	0.75	5.50	4	4.52
3"	AC460T-48	AC660T-48	7.50	3.063	0.5	0.75	6.00	4	4.89
4"	AC460T-64	AC660T-64	9.00	4.063	0.5	0.75	7.50	8	6.59
5"	AC460T-80	AC660T-80	10.00	5.063	0.5	0.88	8.50	8	7.32
6"	AC460T-96	AC660T-96	11.00	6.063	0.5	0.88	9.50	8	8.27
8"	AC460T-128	AC660T-128	13.50	8.063	0.5	0.88	11.75	8	11.86
10"	AC460T-160	AC660T-160	16.00	10.063	0.5	1.00	14.25	12	18.39
12"	AC460T-192	AC660T-192	19.00	12.063	0.5	1.00	17.00	12	26.87

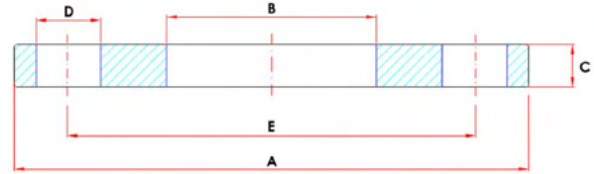
IPS Slip-On Bevel x Square Plate Flange



Please Note: Pictured is a flange with 4 bolt holes. The number of bolt holes change based on the diameter of the flange.

Size (IN)	Part Numbers		Measurements (IN)					Number of Bolt Holes	Weight (LB)
	304	316	A (O.D.)	B (I.D.)	C (Thickness)	D (Bolt Holes)	E (Bolt Circle)		
1"	AC460L-16	AC660L-16	4.25	1.36	0.5	0.62	3.12	4	1.74
1¼"	AC460L-20	AC660L-20	4.62	1.70	0.5	0.62	3.50	4	2.01
1½"	AC460L-24	AC660L-24	5.00	1.94	0.5	0.62	3.88	4	2.31
2"	AC460L-32	AC660L-32	6.00	2.44	0.5	0.75	4.75	4	3.28
2½"	AC460L-40	AC660L-40	7.00	2.94	0.5	0.75	5.50	4	4.52
3"	AC460L-48	AC660L-48	7.50	3.57	0.5	0.75	6.00	4	4.89
4"	AC460L-64	AC660L-64	9.00	4.60	0.5	0.75	7.50	8	6.59
5"	AC460L-80	AC660L-80	10.00	5.66	0.5	0.88	8.50	8	7.32
6"	AC460L-96	AC660L-96	11.00	6.72	0.5	0.88	9.50	8	8.27
8"	AC460L-128	AC660L-128	13.50	8.72	0.5	0.88	11.75	8	11.86
10"	AC460L-160	AC660L-160	16.00	10.88	0.5	1.00	14.25	12	18.43
12"	AC460L-192	AC660L-192	19.00	12.88	0.5	1.00	17.00	12	26.87

IPS Slip-On Square x Square Plate Flange



Please Note: Pictured is a flange with 8 bolt holes. The number of bolt holes change based on the diameter of the flange.

Size (IN)	Part Numbers		Measurements (IN)					Number of Bolt Holes	Weight (LB)
	304	316	A (O.D.)	B (I.D.)	C (Thickness)	D (Bolt Holes)	E (Bolt Circle)		
1"	AC460NB-16	AC660NB-16	4.25	1.36	0.5	0.62	3.12	4	1.74
1¼"	AC460NB-20	AC660NB-20	4.62	1.70	0.5	0.62	3.50	4	2.01
1½"	AC460NB-24	AC660NB-24	5.00	1.94	0.5	0.62	3.88	4	2.31
2"	AC460NB-32	AC660NB-32	6.00	2.44	0.5	0.75	4.75	4	3.28
2½"	AC460NB-40	AC660NB-40	7.00	2.94	0.5	0.75	5.50	4	4.52
3"	AC460NB-48	AC660NB-48	7.50	3.57	0.5	0.75	6.00	4	4.89
4"	AC460NB-64	AC660NB-64	9.00	4.60	0.5	0.75	7.50	8	6.59
5"	AC460NB-80	AC660NB-80	10.00	5.66	0.5	0.88	8.50	8	7.32
6"	AC460NB-96	AC660NB-96	11.00	6.72	0.5	0.88	9.50	8	8.27
8"	AC460NB-128	AC660NB-128	13.50	8.72	0.5	0.88	11.75	8	11.86
10"	AC460NB-160	AC660NB-160	16.00	10.88	0.5	1.00	14.25	12	18.43
12"	AC460NB-192	AC660NB-192	19.00	12.88	0.5	1.00	17.00	12	26.87

Stainless Steel Plate Flanges ASTM A240

Type 304/304L 150LB

Diameter (IN)	Blind		Tube OD Slip-On		IPS Slip-On Bevel x Sq		IPS Slip-On Sq x Sq	
	Part #	List Price	Part #	List Price	Part #	List Price	Part #	List Price
1"	AC460BL-16	\$ 64.65	AC460T-16*	\$ 54.71	AC460L-16	\$ 54.71	AC460NB-16	\$ 54.71
1¼"	AC460BL-20	\$ 79.58	AC460T-20*	\$ 61.34	AC460L-20	\$ 61.34	AC460NB-20	\$ 61.34
1½"	AC460BL-24	\$ 84.55	AC460T-24	\$ 67.98	AC460L-24	\$ 67.98	AC460NB-24	\$ 67.98
2"	AC460BL-32	\$ 107.76	AC460T-32	\$ 97.81	AC460L-32	\$ 99.48	AC460NB-32	\$ 99.48
2½"	AC460BL-40	\$ 149.21	AC460T-40	\$ 130.96	AC460L-40	\$ 132.63	AC460NB-40	\$ 132.63
3"	AC460BL-48	\$ 172.41	AC460T-48	\$ 140.91	AC460L-48	\$ 144.23	AC460NB-48	\$ 144.23
4"	AC460BL-64	\$ 243.70	AC460T-64	\$ 193.96	AC460L-64	\$ 193.96	AC460NB-64	\$ 193.96
5"	AC460BL-80	\$ 329.91	AC460T-80	\$ 218.84	AC460L-80	\$ 215.53	AC460NB-80	\$ 215.53
6"	AC460BL-96	\$ 364.73	AC460T-96	\$ 247.01	AC460L-96	\$ 247.01	AC460NB-96	\$ 247.01
8"	AC460BL-128	\$ 558.69	AC460T-128	\$ 353.13	AC460L-128	\$ 353.13	AC460NB-128	\$ 353.13
10"	AC460BL-160	\$ 1,332.90	AC460T-160	\$ 552.06	AC460L-160	\$ 555.38	AC460NB-160	\$ 555.38
12"	AC460BL-192	\$ 1,906.53	AC460T-192	\$ 823.95	AC460L-192	\$ 805.73	AC460NB-192	\$ 805.73

Stainless Steel Plate Flanges ASTM A240

Type 316/316L 150LB

Diameter (IN)	Blind		Tube OD Slip-On		IPS Slip-On Bevel x Sq		IPS Slip-On Sq x Sq	
	Part #	List Price	Part #	List Price	Part #	List Price	Part #	List Price
1"	AC660BL-16	\$ 94.50	AC660T-16*	\$ 87.88	AC660L-16	\$ 87.88	AC660NB-16*	\$ 87.88
1¼"	AC660BL-20	\$ 109.43	AC660T-20*	\$ 99.48	AC660L-20	\$ 99.48	AC660NB-20*	\$ 99.48
1½"	AC660BL-24	\$ 116.05	AC660T-24	\$ 94.50	AC660L-24	\$ 92.85	AC660NB-24	\$ 92.85
2"	AC660BL-32	\$ 164.13	AC660T-32	\$ 132.63	AC660L-32	\$ 134.29	AC660NB-32	\$ 134.29
2½"	AC660BL-40	\$ 232.10	AC660T-40	\$ 190.65	AC660L-40	\$ 190.65	AC660NB-40	\$ 190.65
3"	AC660BL-48	\$ 260.28	AC660T-48	\$ 193.96	AC660L-48	\$ 193.96	AC660NB-48	\$ 193.96
4"	AC660BL-64	\$ 366.39	AC660T-64	\$ 261.94	AC660L-64	\$ 268.58	AC660NB-64	\$ 268.58
5"	AC660BL-80*	\$ 494.63	AC660T-80*	\$ 293.44	AC660L-80	\$ 293.44	AC660NB-80	\$ 293.44
6"	AC660BL-96	\$ 580.25	AC660T-96	\$ 331.58	AC660L-96	\$ 331.58	AC660NB-96	\$ 331.58
8"	AC660BL-128	\$ 721.16	AC660T-128	\$ 474.15	AC660L-128	\$ 474.15	AC660NB-128	\$ 474.15
10"	AC660BL-160	\$ 1,649.56	AC660T-160	\$ 729.45	AC660L-160	\$ 729.45	AC660NB-160	\$ 729.45
12"	AC660BL-192	\$ 2,359.13	AC660T-192	\$ 1,017.91	AC660L-192	\$ 1,017.91	AC660NB-192	\$ 1,017.91

Please Note: IPS Slip-On Bevel x Sq, 316 Plate Flanges in 1/2" (AC660L-08 List Price: \$64.65) and 3/4" (AC660L-12 List Price: \$79.58) are available on www.mbwebxpress.com. We reserve the right to change quantities to standard packaging on staple items unless you specifically state "do not increase." For the Master Carton (Box) Quantity List, please visit meritbrass.com/pricesheets.

Items marked with an asterisk (*) may not be immediately available from stock.

Some items not shown may be available upon request. Some items and sizes may be discontinued when stock is depleted and may require a minimum order quantity. Certain inventory limitations may apply. Priced on application (POA). All prices subject to change without notice. Every precaution has been taken in preparing this sheet. Merit Brass Company cannot be held responsible for omissions or typographical errors. For list prices in Excel, please download by logging onto meritbrass.com/pricesheets. Contact our Sales Team for details at contactus@meritbrass.com.

LOCATIONS

SPARKS DISTRIBUTION CENTER
200 Vista Boulevard Suite #106
Sparks, NV 89434

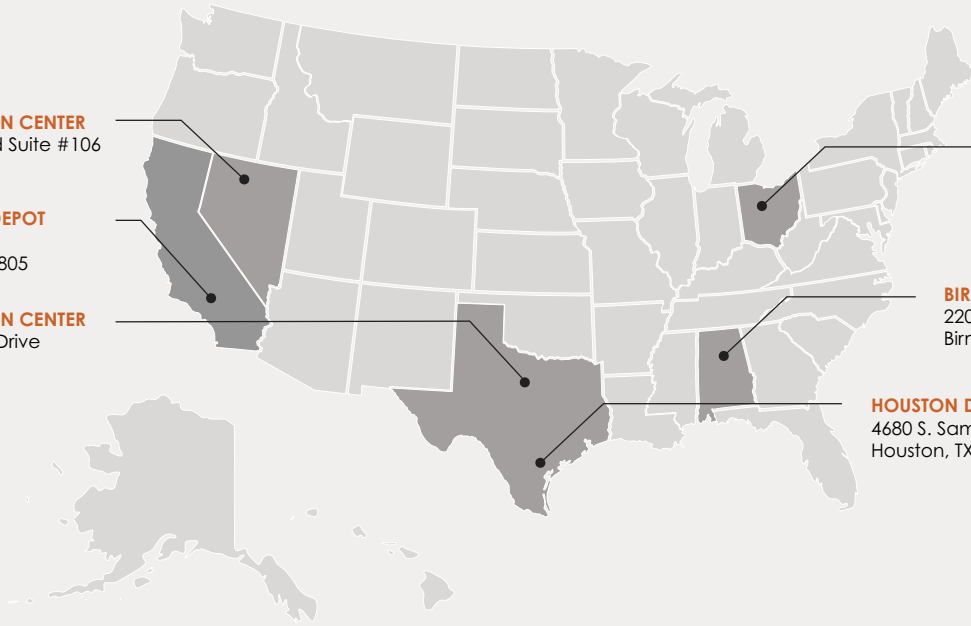
LONG BEACH PIPE DEPOT
2396 E. Artesia Blvd
Long Beach, CA 90805

DALLAS DISTRIBUTION CENTER
10614 King William Drive
Dallas, TX 75220

CLEVELAND HEADQUARTERS
One Merit Drive/PO Box 43127
Cleveland, OH 44143

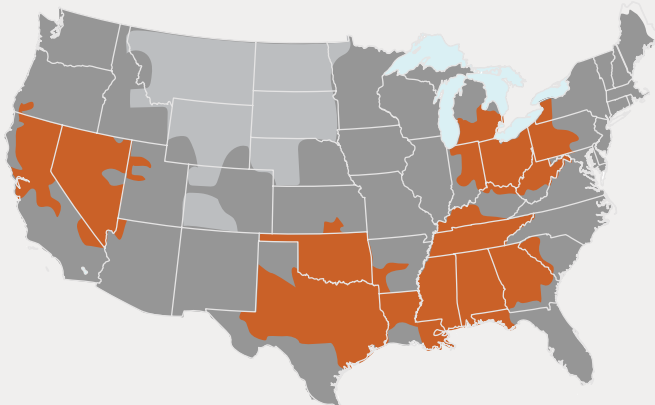
BIRMINGHAM DISTRIBUTION CENTER
220 Oxmoor Court
Birmingham, AL 35209

HOUSTON DISTRIBUTION CENTER
4680 S. Sam Houston Pkwy W, Suite 120
Houston, TX 77053



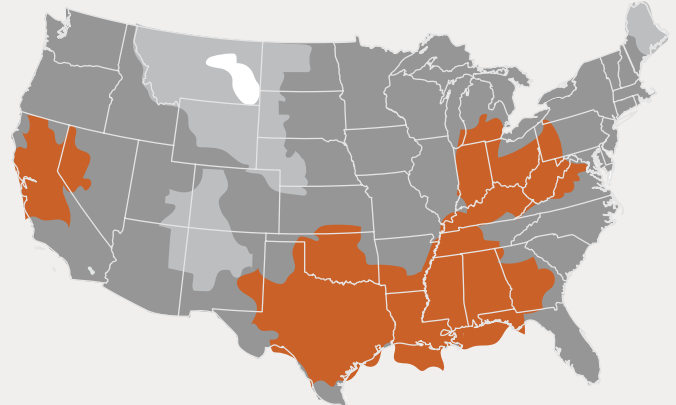
SHIPPING TIMES

UPS



1 Day 2 Days 3 Days

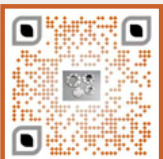
FedEx



1 Day 2 Days 3 Days 4 Days

*FedEx is Merit's Primary Carrier

LEARN MORE



800.726.9800

Follow us on [f](#) [X](#) [in](#) [@](#) [v](#) [p](#)

www.meritbrass.com
www.mbwebxpress.com
contactus@meritbrass.com

Merit Brass Headquarters Has An ISO 9001:2015 Registered Quality Management System