

STAINLESS STEEL VALVES

1-PC Stainless Steel Ball Valve – Reduced Port, 800 WOG

V108



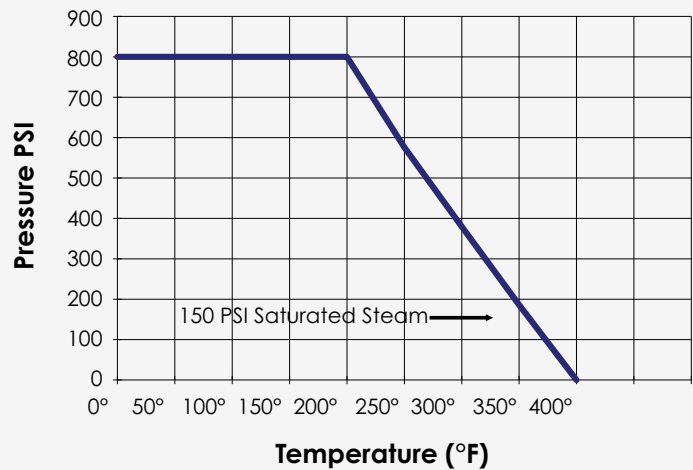
Design Features

- Blow-out Proof Stem
- Pressure Balance Hole Ball Slot
- Reduced Port
- Various Threaded Standards Available
- Locking Device is Available Upon Request

Applicable Standards

- Design: ASME/ANSI B16.34 EN12516
- Wall Thickness: ASME/ANSI B16.34 EN12516
- Pipe Thread: ASME/ANSI B1.20.1
- Inspection & Testing: ASME/ANSI B16.34 EN12516

Size	Cv	Weight (Lbs)	Port	Torque (In-Lbs)
1/4"	4	0.19	0.20	12
3/8"	4	0.24	0.32	12
1/2"	4.5	0.34	0.35	12
3/4"	9	0.53	0.49	20
1"	16	0.77	0.63	35
1-1/4"	24	1.54	0.79	55
1-1/2"	37	1.77	0.98	65
2"	68	2.79	1.26	80



LEARN MORE



800.726.9800

Follow us on [f](#) [X](#) [in](#) [@](#) [v](#) [p](#)

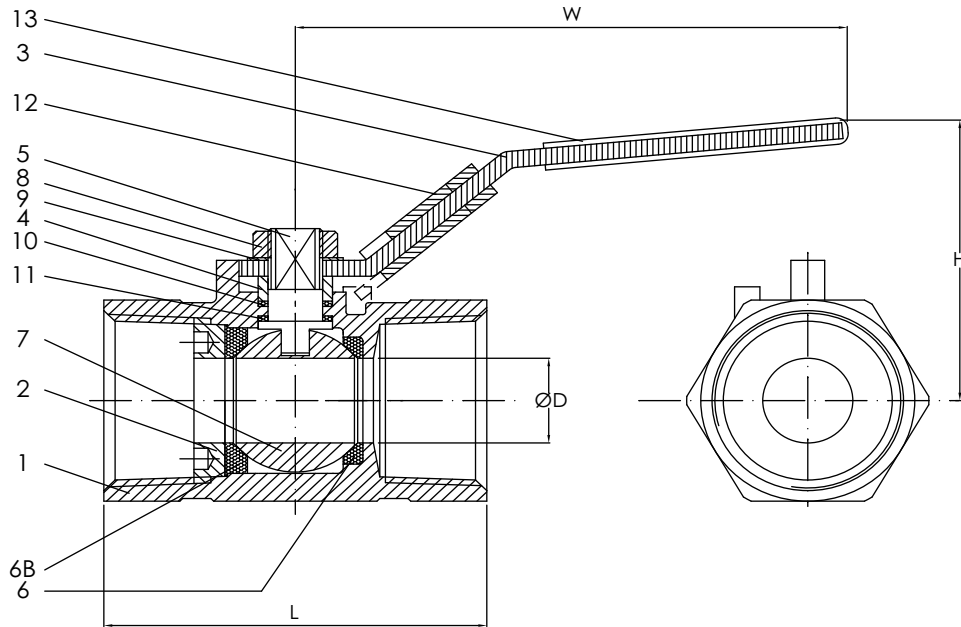
Headquarters: One Merit Drive, PO Box 43127, Cleveland, OH 44143

www.meritbrass.com
www.mbwebxpress.com
contactus@meritbrass.com

STAINLESS STEEL VALVES

1-PC Stainless Steel Ball Valve – Reduced Port, 800 WOG

V108



Unit: Inch

NO.	Part Name	Qty	Material		
1	Body	1	ASTM	A351	CF8M
2	Insert	1	SUS316		
3	Handle	1	SUS304		
4	Gland	1	SUS304		
5	Stem	1	SUS316		
6	Seat Ring	1	Teflon		
6B	Seat Ring	1	Teflon		
7	Ball	1	SUS316		
8	Handle Nut	1	SUS304		
9	Spring Washer	1	SUS304		
10	Thrust Washer	1	Teflon		
11	Thrust Washer	1	Teflon		
12	Locking Device	1	SUS304		
13	Handle Cover	1	Plastic		

Size	D Port	L	H	W
1/4"	0.20	1.61	1.50	3.23
3/8"	0.32	1.73	1.57	3.23
1/2"	0.35	2.09	1.69	3.23
3/4"	0.49	2.36	1.97	3.94
1"	0.63	2.80	2.09	3.94
1-1/4"	0.79	3.23	2.60	5.91
1-1/2"	0.98	3.47	2.76	5.91
2"	1.26	4.09	2.95	5.91