

Bushing Reducer

FTG x P



Job Name	<input type="text"/>
Job Location	<input type="text"/>
P.O.#	<input type="text"/>
Engineer	<input type="text"/>
Contractor	<input type="text"/>
Wholesaler	<input type="text"/>
Merit Associate	<input type="text"/>

**StainlessPress® Bushing Reducer FTG x P** is available in sizes ¾" x ½" – 2" x 1½" with an EPDM, HNBR or FKM sealing element.

- **FIRST TO MARKET Visual Indicator Press Ring® (VIPR®)** - facilitates immediate identification of un-pressed connections.
- **Mates with IPS (Iron Pipe Size)** 304 & 316 Schedule 5 or 10 Stainless Steel Pipe
- **Leak Before Press (LBP)** - in addition to the VIPR®, all sizes have leak before press technology, which guarantees a visual indication if the fitting is not pressed.
- **Applications:** HVAC, plumbing, municipal, mechanical, industrial and marine applications.

**StainlessPress® Operational Parameters:**

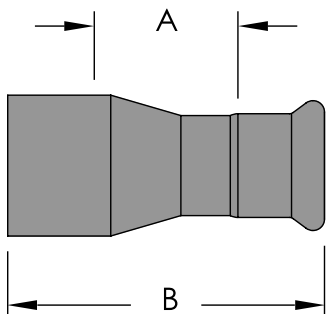
- **Operating Pressure:** from full vacuum to 300 PSI on Schedule 5 or 10 Stainless Steel Pipe.
- **Temperature Range:** EPDM: -4°F to 230°F. | HNBR: -31°F to 248°F. | FKM: -4°F to 356°F.

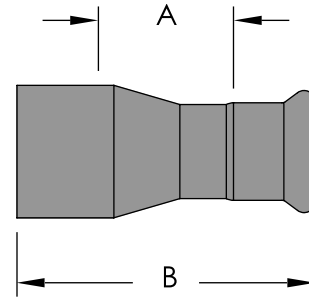
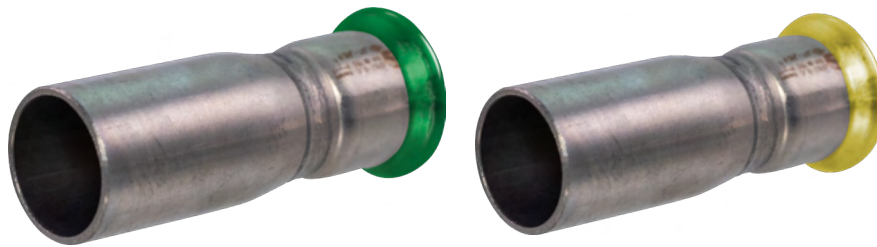
**StainlessPress® Certifications**

IAPMO/ANSI/CAN Z1117, NSF/ANSI/CAN 61 (EPDM only), NSF/ANSI/CAN 372 (EPDM only), FM 1920, American Bureau of Shipping Product Design Assessment (PDA) Certificate 1-5-PR1438892-PDA, Piping System and Couplings.

**StainlessPress® Codes and Standards**

ASME B31.1, B31.3, B31.9, IPC, IMC, IRC, UPC, UMC, CPC & CMC, City of Los Angeles Plumbing & Mechanical Codes, Massachusetts Regulation 248 CMR 10.00: Uniform State Plumbing Code: Massachusetts State Building Code 780 CMR Ninth edition: Chapter 28: NPSC, NPCC.





Bushing Reducer						FTG x P		
Item Number			Nominal Size (in)	O.D.	Dimensions (in)		Weight lbs	
EPDM	HNBR	FKM			A	B		
MBF143/41/26GE	MBF143/41/26GEH	MBF143/41/26GEF	¾" x ½"	1.050 x 0.840	1.21	3.04	0.18	
MBF1411/26GE	MBF1411/26GEH	MBF1411/26GEF	1" x ½"	1.315 x 0.840	1.30	3.19	0.23	
MBF1413/46GE	MBF1413/46GEH	MBF1413/46GEF	1" x ¾"	1.315 x 1.050	1.75	3.76	0.26	
MBF1411/41/26GE	MBF1411/41/26GEH	MBF1411/41/26GEF	1¼" x ½"	1.660 x 0.840	1.20	3.21	0.27	
MBF1411/43/46GE	MBF1411/43/46GEH	MBF1411/43/46GEF	1¼" x ¾"	1.660 x 1.050	1.36	3.37	0.26	
MBF1411/416GE	MBF1411/416GEH	MBF1411/416GEF	1¼" x 1"	1.660 x 1.315	1.51	3.52	0.31	
MBF1411/21/26GE	MBF1411/21/26GEH	MBF1411/21/26GEF	1½" x ½"	1.900 x 0.840	1.15	3.42	0.33	
MBF1411/23/46GE	MBF1411/23/46GEH	MBF1411/23/46GEF	1½" x ¾"	1.900 x 1.050	1.60	3.55	0.55	
MBF1411/216GE	MBF1411/216GEH	MBF1411/216GEF	1½" x 1"	1.900 x 1.315	2.03	4.25	0.39	
MBF1411/211/46GE	MBF1411/211/46GEH	MBF1411/211/46GEF	1½" x 1¼"	1.900 x 1.600	1.68	4.11	0.44	
MBF1421/26GE	MBF1421/26GEH	MBF1421/26GEF	2" x ½"	2.375 x 0.840	1.62	4.23	0.53	
MBF1423/46GE	MBF1423/46GEH	MBF1423/46GEF	2" x ¾"	2.375 x 1.050	1.59	4.34	0.35	
MBF14216GE	MBF14216GEH	MBF14216GEF	2" x 1"	2.375 x 1.315	1.55	4.37	0.57	
MBF14211/46GE	MBF14211/46GEH	MBF14211/46GEF	2" x 1¼"	2.375 x 1.660	2.60	5.24	0.63	
MBF14211/26GE	MBF14211/26GEH	MBF14211/26GEF	2" x 1½"	2.375 x 1.900	1.79	4.77	0.72	