

Reducing Tee (P x FPT)

P x P x FPT



Job Name

Job Location

P.O.#

Engineer

Contractor

Wholesaler

Merit Associate

StainlessPress® Tee & Reducing Tee Adapters P x P x FPT is available in sizes ½" – 2" with an EPDM, HNBR or FKM sealing element.

- **FIRST TO MARKET Visual Indicator Press Ring® (VIPR®)** - facilitates immediate identification of un-pressed connections.
- **Mates with IPS (Iron Pipe Size)** 304 & 316 Schedule 5 or 10 Stainless Steel Pipe
- **Leak Before Press (LBP)** - in addition to the VIPR®, all sizes have leak before press technology, which guarantees a visual indication if the fitting is not pressed.
- **Applications:** HVAC, plumbing, municipal, mechanical, industrial and marine applications.

StainlessPress® Operational Parameters:

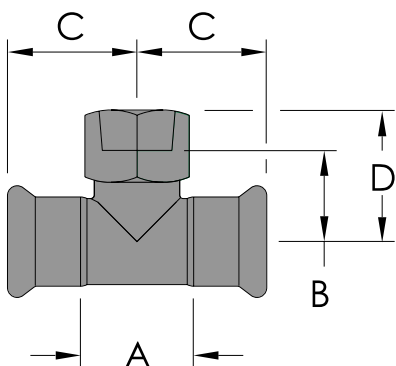
- **Operating Pressure:** from full vacuum to 300 PSI on Schedule 5 or 10 Stainless Steel Pipe.
- **Temperature Range:** EPDM: -4°F to 230°F. | HNBR: -31°F to 248°F. | FKM: -4°F to 356°F.

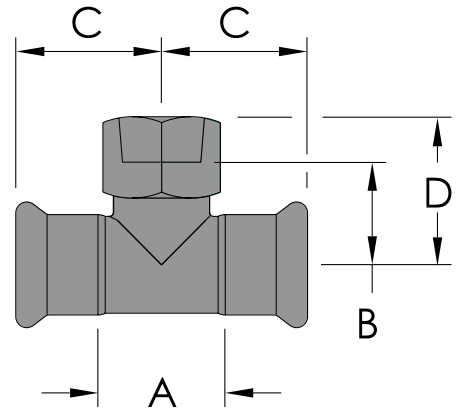
StainlessPress® Certifications

IAPMO/ANSI/CAN Z1117, NSF/ANSI/CAN 61 (EPDM only), NSF/ANSI/CAN 372 (EPDM only), FM 1920, American Bureau of Shipping Product Design Assessment (PDA) Certificate 1-5-PR1438892-PDA, Piping System and Couplings.

StainlessPress® Codes and Standards

ASME B31.1, B31.3, B31.9, IPC, IMC, IRC, UPC, UMC, CPC & CMC, City of Los Angeles Plumbing & Mechanical Codes, Massachusetts Regulation 248 CMR 10.00: Uniform State Plumbing Code: Massachusetts State Building Code 780 CMR Ninth edition: Chapter 28: NPSC, NPCC.





Reducing Tee (P x FPT)					P x P x FPT				
Item Number			Nominal Size (in)	O.D.	Dimensions (in)				Weight lbs
EPDM	HNBR	FKM			A	B	C	D	
MBF121/21/26GE	MBF121/21/26GEH	MBF121/21/26GEF	1/2"	0.840 x 0.840 x 0.840	1.28	0.93	1.48	1.52	0.26
MBF121/23/46GE	MBF121/23/46GEH	MBF121/23/46GEF	1/2" x 3/4"	0.840 x 0.840 x 1.050	1.28	1.30	1.48	1.84	0.37
MBF123/41/26GE	MBF123/41/26GEH	MBF123/41/26GEF	3/4" x 1/2"	1.050 x 1.050 x 0.840	1.50	0.96	1.70	1.63	0.33
MBF123/43/46GE	MBF123/43/46GEH	MBF123/43/46GEF	3/4"	1.050 x 1.050 x 1.050	1.50	1.15	1.70	1.81	0.40
MBF123/416GE	MBF123/416GEH	MBF123/416GEF	3/4" x 1"	1.050 x 1.050 x 1.315	1.50	1.12	1.70	1.97	0.46
MBF1211/26GE	MBF1211/26GEH	MBF1211/26GEF	1" x 1/2"	1.315 x 1.315 x 0.840	1.78	1.11	1.91	1.78	0.42
MBF1213/46GE	MBF1213/46GEH	MBF1213/46GEF	1" x 3/4"	1.315 x 1.315 x 1.050	1.78	1.26	1.91	1.96	0.48
MBF12111/46GE	MBF12111/46GEH	MBF12111/46GEF	1" x 1 1/4"	1.315 x 1.315 x 1.660	1.78	1.59	1.92	2.43	0.91
MBF1211/41/26GE	MBF1211/41/26GEH	MBF1211/41/26GEF	1 1/4" x 1/2"	1.660 x 1.660 x 0.840	2.13	1.24	2.25	1.92	0.57
MBF1211/43/46GE	MBF1211/43/46GEH	MBF1211/43/46GEF	1 1/4" x 3/4"	1.660 x 1.660 x 1.050	2.13	1.39	2.25	2.07	0.62
MBF1211/416GE	MBF1211/416GEH	MBF1211/416GEF	1 1/4" x 1"	1.660 x 1.660 x 1.315	2.13	1.35	2.25	2.11	0.75
MBF1211/411/46GE	MBF1211/411/46GEH	MBF1211/411/46GEF	1 1/4"	1.660 x 1.660 x 1.660	2.13	1.67	2.24	2.51	1.00
MBF1211/21/26GE	MBF1211/21/26GEH	MBF1211/21/26GEF	1 1/2" x 1/2"	1.900 x 1.900 x 0.840	3.19	1.44	2.80	2.12	0.85
MBF1211/23/46GE	MBF1211/23/46GEH	MBF1211/23/46GEF	1 1/2" x 3/4"	1.900 x 1.900 x 1.050	3.19	1.57	2.80	2.25	0.91
MBF1211/216GE	MBF1211/216GEH	MBF1211/216GEF	1 1/2" x 1"	1.900 x 1.900 x 1.315	3.19	1.59	2.80	2.33	1.03
MBF1211/211/26GE	MBF1211/211/26GEH	MBF1211/211/26GEF	1 1/2"	1.900 x 1.900 x 1.900	3.19	1.54	2.80	2.64	1.27
MBF1221/26GE	MBF1221/26GEH	MBF1221/26GEF	2" x 1/2"	2.375 x 2.375 x 0.840	3.22	1.65	3.39	2.32	1.19
MBF1223/46GE	MBF1223/46GEH	MBF1223/46GEF	2" x 3/4"	2.375 x 2.375 x 1.050	3.22	1.86	3.39	2.50	1.26
MBF12216GE	MBF12216GEH	MBF12216GEF	2" x 1"	2.375 x 2.375 x 1.315	3.22	1.78	3.39	2.52	1.32
MBF12226GE	MBF12226GEH	MBF12226GEF	2"	2.375 x 2.375 x 2.375	3.22	2.26	3.39	3.19	1.90