

# Lead-Free Brass Ball Valves

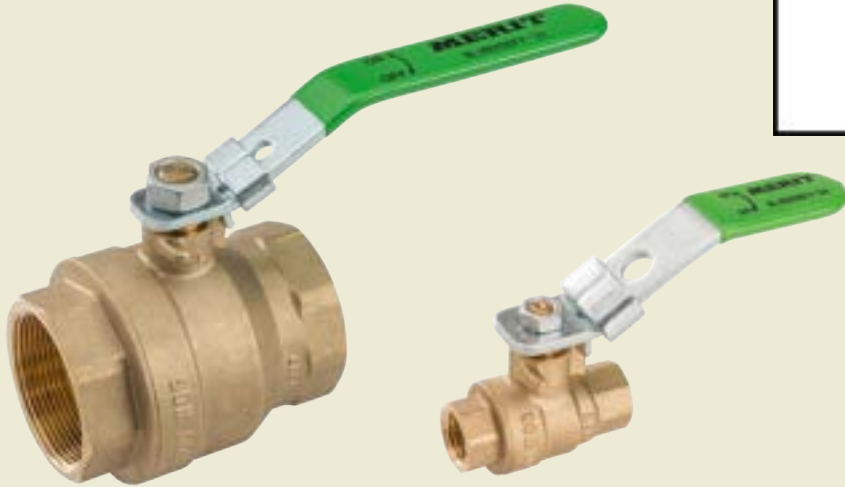
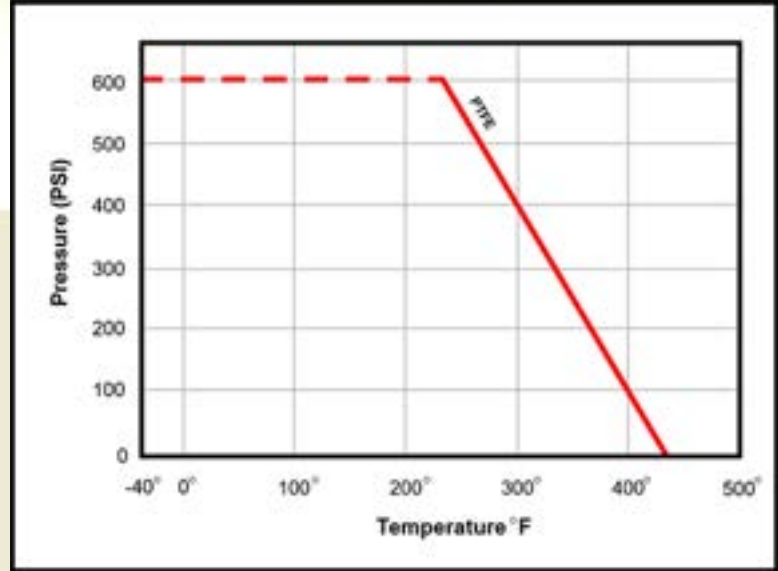
## Diameters: 1/4" - 2"

### DESIGN FEATURES:

- **Body:** Forged Lead-Free Brass
- **Port:** Full
- **Design:** Two Piece Body
- **Handle:** Locking Device
- **Ball:** Chrome Plated Lead-Free Brass 1/4" - 1"  
304 Stainless Steel 1-1/4" - 2"
- **Seats:** PTFE
- **Stem:** Blow-Out Proof
- **1/4" - 2" Rated:** 600PSI Non-Shock WOG

### APPLICABLE STANDARDS:

- Threaded Ends ANSI B1.20.1
- Conforms to MSS-SP-110
- CSA Gas Approved to 2" (IPS Only)
- NSF61 and ANSI 372 Approved



Conforms with lead content requirements for lead-free plumbing as defined by the U.S. Safe Drinking Water Act. Certified  $\leq 0.25$  weighted average % lead.

#### Cleveland Headquarters

One Merit Drive/PO Box 43127  
Cleveland, OH 44143  
TEL: 800.726.9800  
FAX: 855.MBFAXIT (623.2948)  
EMAIL: mbsales@meritbrass.com

#### Dallas Distribution Center

10614 King William Drive  
Dallas, TX 75220  
TEL: 877.259.2591  
FAX: 877.259.2596  
EMAIL: mbsalesTX@meritbrass.com

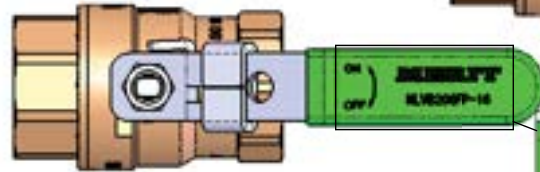
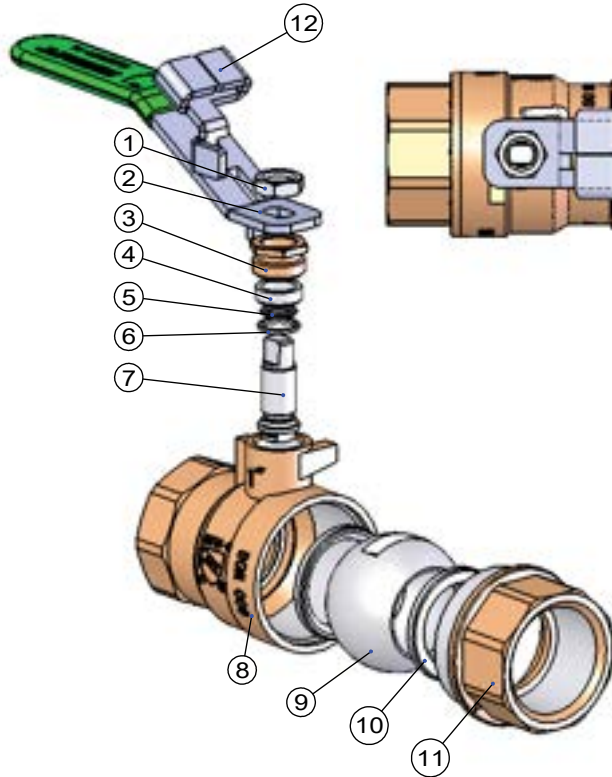
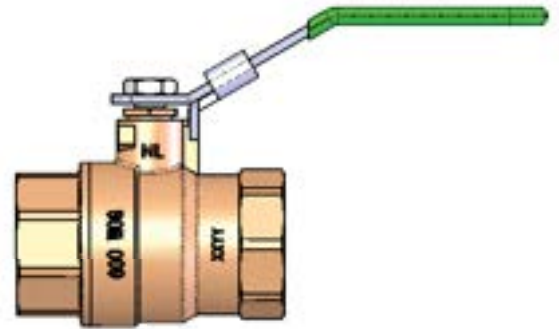
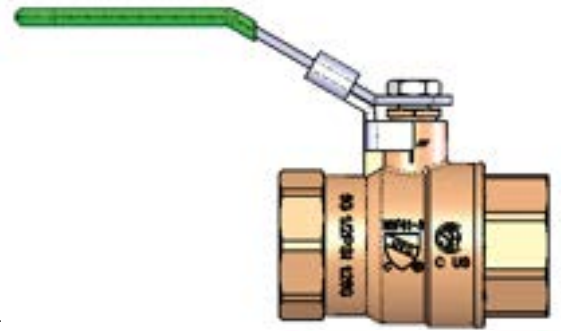
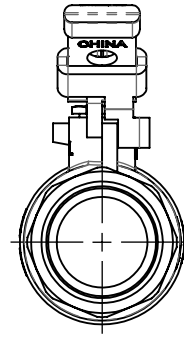
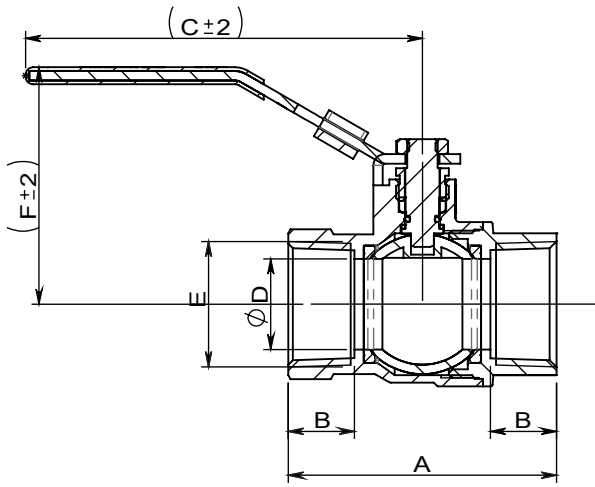
#### Birmingham Distribution Center

220 Oxmoor Court  
Birmingham, AL 35209  
TEL: 855.912.0409  
FAX: 866.668.9168  
EMAIL: mbsalesAL@meritbrass.com

#### Sparks Distribution Center

200 Vista Blvd., Suite #106  
Sparks, NV 89434  
TEL: 877.711.RENO (7366)  
FAX: 877.376.0093  
EMAIL: mbsalesNV@meritbrass.com





PART NO.

No.	Part	Material	QTY.
1	Hex-nut	Steel	1
2	Handle	Steel	1
3	Packing nut	Brass	1
4	Packing gland	PTFE	1
5	O-Ring	EPDM	1
6	Washer	PTFE	1
7	Stem	1/4"-1" : C46500 1-1/4"-2" : C36000	1
8	Body	C46500	1
9	Ball	1/4"-1" : C46500 1-1/4"-2" : AISI304	1
10	Seat	PTFE	2
11	Bonnet	C46500	1
12	Lock catch	Steel	1

Size	A(in)	B(in)	C(in)	D(in)	E	F(in)	Weight(lb)	PART NO.
1/4"	1.732	0.453	3.15	Ø 0.394	1/4-18NPT	1.843	0.26	NLVB206FP-04
3/8"	1.732	0.453	3.15	Ø 0.394	3/8-18NPT	1.843	0.26	NLVB206FP-06
1/2"	2.047	0.551	3.15	Ø 0.512	1/2-14NPT	1.937	0.37	NLVB206FP-08
3/4"	2.303	0.571	4.134	Ø 0.709	3/4-14NPT	2.291	0.55	NLVB206FP-12
1"	2.795	0.689	4.134	Ø 0.945	1-11.5NPT	2.469	0.88	NLVB206FP-16
1-1/4"	3.15	0.689	4.921	Ø 1.201	1 1/4-11.5NPT	3.039	1.36	NLVB206FP-20
1-1/2"	3.504	0.709	4.921	Ø 1.457	1 1/2-11.5NPT	3.217	1.88	NLVB206FP-24
2"	4.193	0.748	7.087	Ø 1.949	2-11.5NPT	3.72	3.44	NLVB206FP-32

# Lead-Free Brass Ball Valves

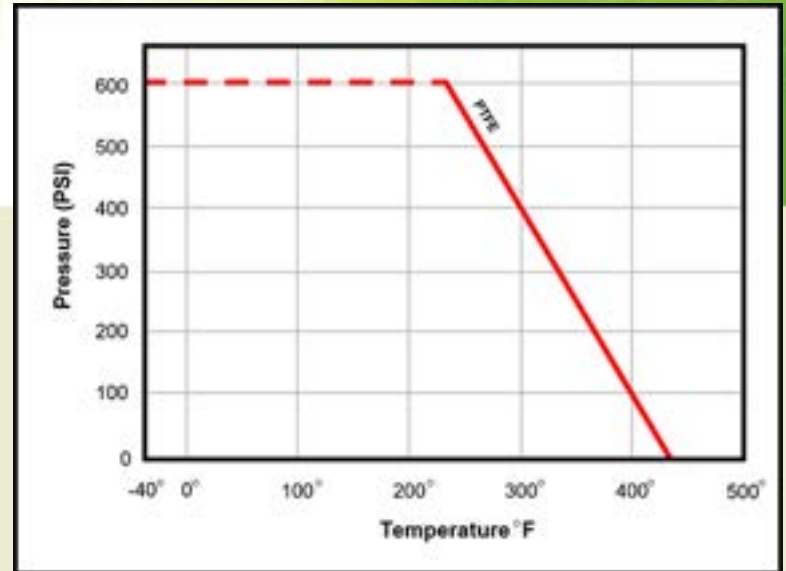
## Diameters: 2-1/2" - 4"

### DESIGN FEATURES:

- **Body:** Forged Lead-Free Brass
- **Port:** Full
- **Design:** Two Piece Body
- **Handle:** Locking Device
- **Ball:** 304 Stainless Steel
- **Seats:** PTFE
- **Stem:** Blow-Out Proof
- **2-1/2" - 4" Rated:** 600PSI Non-Shock WOG  
125PSI SWP

### APPLICABLE STANDARDS:

- Threaded Ends ANSI B1.20.1
- Conforms to MSS-SP-110
- NSF61 and ANSI 372 Approved
- UL/FM Approved



Conforms with lead content requirements for lead-free plumbing as defined by the U.S. Safe Drinking Water Act. Certified  $\leq 0.25$  weighted average % lead.

#### Cleveland Headquarters

One Merit Drive/PO Box 43127  
Cleveland, OH 44143  
TEL: 800.726.9800  
FAX: 855.MBFAXIT (623.2948)  
EMAIL: mbsales@meritbrass.com

#### Dallas Distribution Center

10614 King William Drive  
Dallas, TX 75220  
TEL: 877.259.2591  
FAX: 877.259.2596  
EMAIL: mbsalesTX@meritbrass.com

#### Birmingham Distribution Center

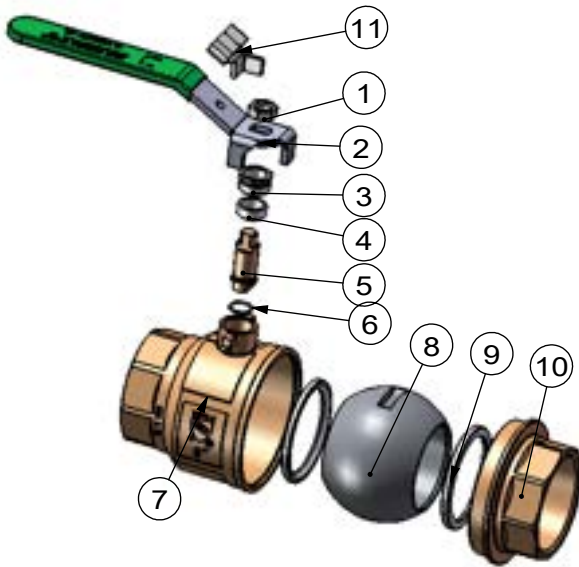
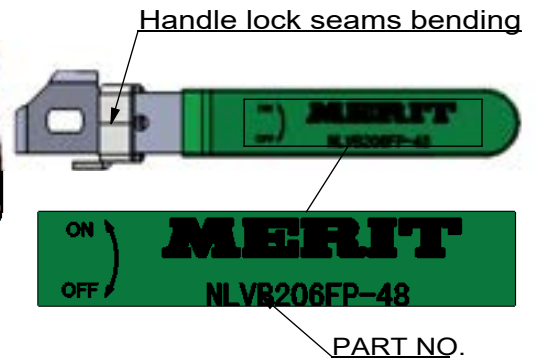
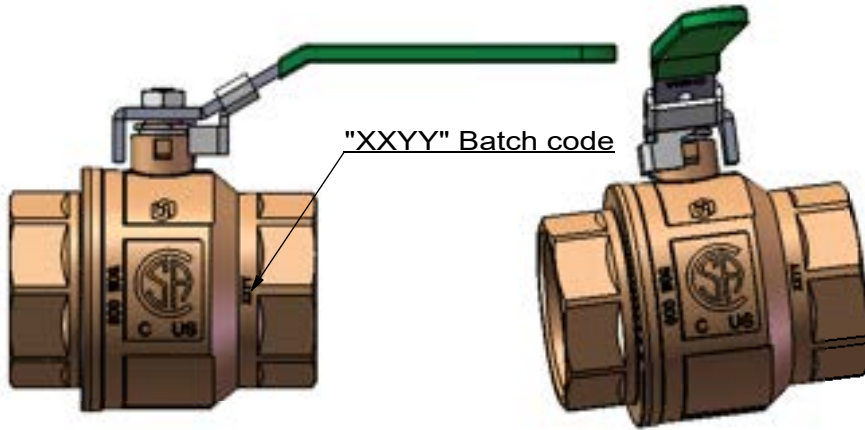
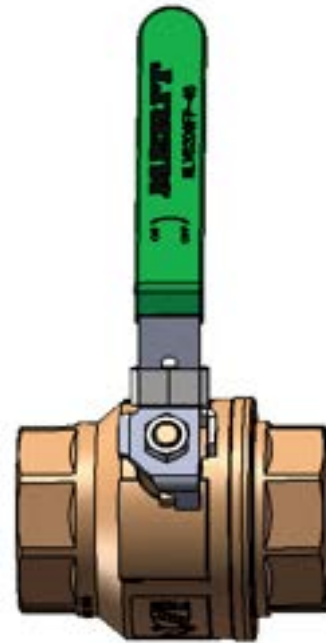
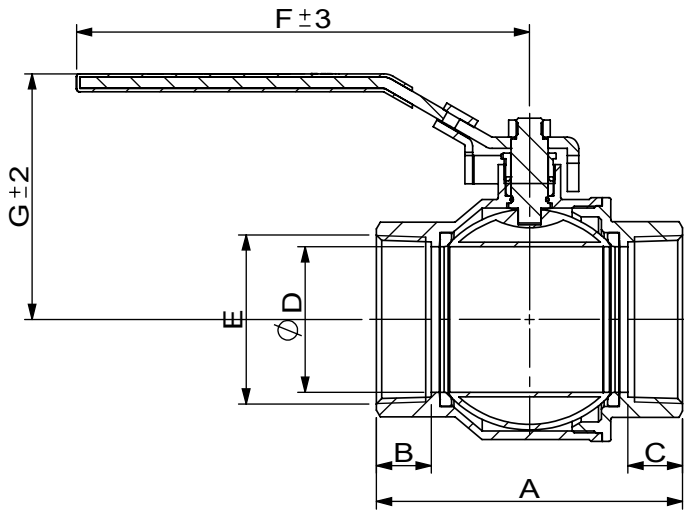
220 Oxmoor Court  
Birmingham, AL 35209  
TEL: 855.912.0409  
FAX: 866.668.9168  
EMAIL: mbsalesAL@meritbrass.com

#### Sparks Distribution Center

200 Vista Blvd., Suite #106  
Sparks, NV 89434  
TEL: 877.711.RENO (7366)  
FAX: 877.376.0093  
EMAIL: mbsalesNV@meritbrass.com







No.	Part	Material	Qty.
1	Hex-nut	Steel	1
2	Handle	Steel	1
3	Packing nut	Brass	1
4	Packing gland	PTFE	1
5	Stem	C3600	1
6	O-ring	EPDM	1
7	Body	C46500	1
8	Ball	Stainless Steel	1
9	Seat	PTFE	1
10	Bonnet	C46500	1
11	Lock catch	Steel	1

Size	A(in)	B(in)	C(in)	D(in)	E	F(in)	G(in)	Weight(lb)	PART NO.
2-1/2"	5.551	1.063	1.063	∅ 2.5	2 1/2-8NPT	9.449	4.744	7.32	NLVB206FP-40
3"	6.378	1.142	1.142	∅ 3.031	3-8NPT	9.449	5.118	10.11	NLVB206FP-48
4"	7.543	1.201	1.201	∅ 3.937	4-8NPT	9.449	5.866	16.91	NLVB206FP-64

# Leaded Brass Ball Valves

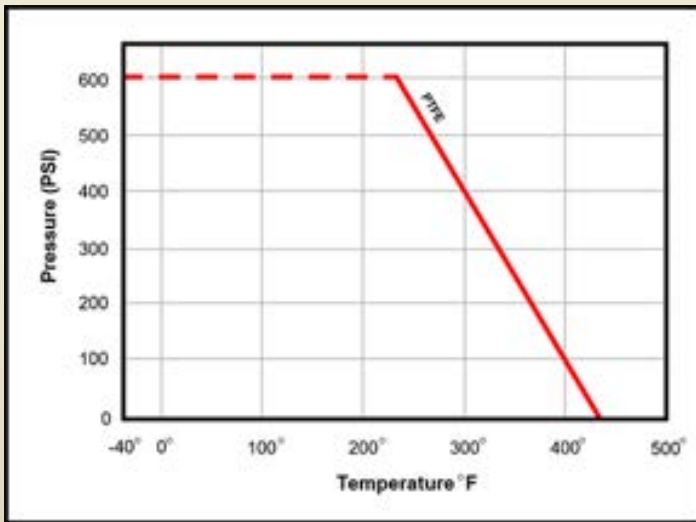
## Diameters: 1/4" - 2"

### DESIGN FEATURES:

- **Body:** Forged Brass
- **Port:** Full
- **Design:** Two Piece Body
- **Handle:** Locking Device
- **Ball:** Chrome Plated Brass
- **Seats:** PTFE
- **Stem:** Blow-Out Proof
- **1/4" - 2" Rated:** 600PSI Non-Shock WOG  
125PSI SWP

### APPLICABLE STANDARDS:

- Threaded Ends ANSI B1.20.1
- Conforms to MSS-SP-110
- CSA Gas Approved to 2" (IPS Only)



**⚠ WARNING:** This product can expose you to Lead, which is known to the State of California to cause cancer and birth defects or other reproductive harm. For more information go to [www.P65Warnings.ca.gov](http://www.P65Warnings.ca.gov). This product is not for use in potable water.

#### Cleveland Headquarters

One Merit Drive/PO Box 43127  
Cleveland, OH 44143  
TEL: 800.726.9800  
FAX: 855.MBFAXIT (623.2948)  
EMAIL: [mbsales@meritbrass.com](mailto:mbsales@meritbrass.com)

#### Dallas Distribution Center

10614 King William Drive  
Dallas, TX 75220  
TEL: 877.259.2591  
FAX: 877.259.2596  
EMAIL: [mbsalesTX@meritbrass.com](mailto:mbsalesTX@meritbrass.com)

#### Birmingham Distribution Center

220 Oxmoor Court  
Birmingham, AL 35209  
TEL: 855.912.0409  
FAX: 866.668.9168  
EMAIL: [mbsalesAL@meritbrass.com](mailto:mbsalesAL@meritbrass.com)

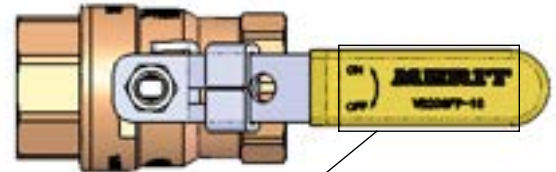
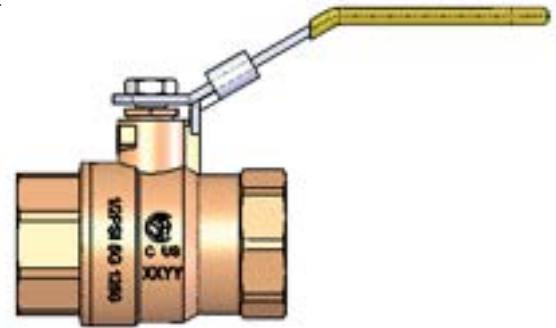
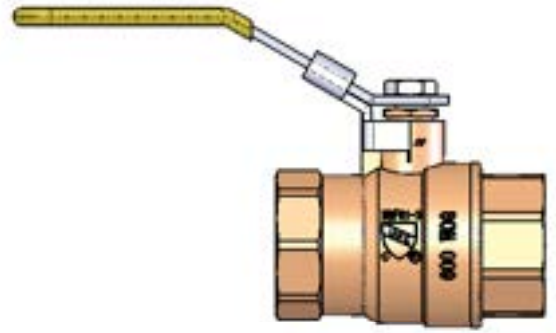
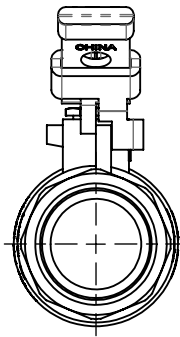
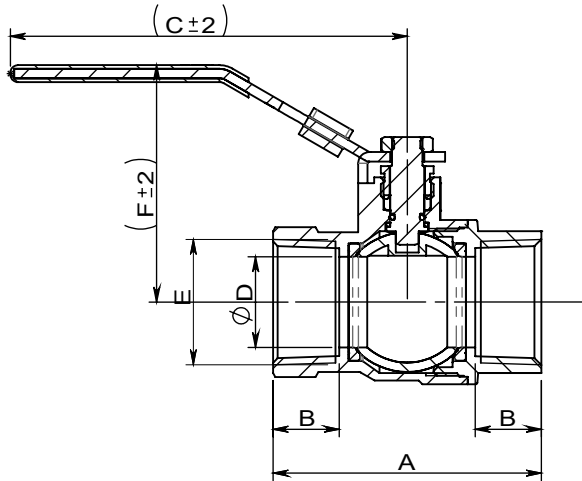
#### Sparks Distribution Center

200 Vista Blvd., Suite #106  
Sparks, NV 89434  
TEL: 877.711.RENO (7366)  
FAX: 877.376.0093  
EMAIL: [mbsalesNV@meritbrass.com](mailto:mbsalesNV@meritbrass.com)

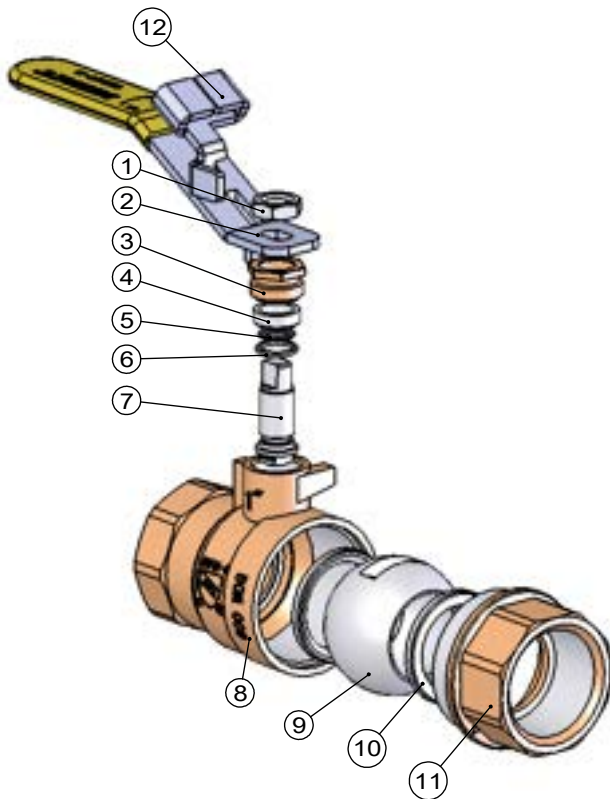
# MERIT BRASS

DIRECTING THE FLOW OF *Quality*

[www.meritbrass.com](http://www.meritbrass.com) • [www.MBWebXpress.com](http://www.MBWebXpress.com)



PART NO.



No.	Part	Material	QTY.
1	Hex-nut	Steel	1
2	Handle	Steel	1
3	Packing nut	Brass	1
4	Packing gland	PTFE	1
5	O-Ring	EPDM	1
6	Washer	PTFE	1
7	Stem	C36000	1
8	Body	C37700	1
9	Ball	Chrome Plated Brass	1
10	Seat	PTFE	2
11	Bonnet	C37700	1
12	Lock catch	Steel	1

Size	A(in)	B(in)	C(in)	D(in)	E	F(in)	Weight(lb)	PART NO.
1/4"	1.732	0.453	3.15	Ø 0.394	1/4-18NPT	1.843	0.26	VB206FP-04
3/8"	1.732	0.453	3.15	Ø 0.394	3/8-18NPT	1.843	0.26	VB206FP-06
1/2"	2.047	0.551	3.15	Ø 0.512	1/2-14NPT	1.937	0.37	VB206FP-08
3/4"	2.303	0.571	4.134	Ø 0.709	3/4-14NPT	2.291	0.55	VB206FP-12
1"	2.795	0.689	4.134	Ø 0.945	1-11.5NPT	2.469	0.88	VB206FP-16
1-1/4"	3.15	0.689	4.921	Ø 1.201	1 1/4-11.5NPT	3.039	1.36	VB206FP-20
1-1/2"	3.504	0.709	4.921	Ø 1.457	1 1/2-11.5NPT	3.217	1.88	VB206FP-24
2"	4.193	0.748	7.087	Ø 1.949	2-11.5NPT	3.72	3.44	VB206FP-32

# Leaded Brass Ball Valves

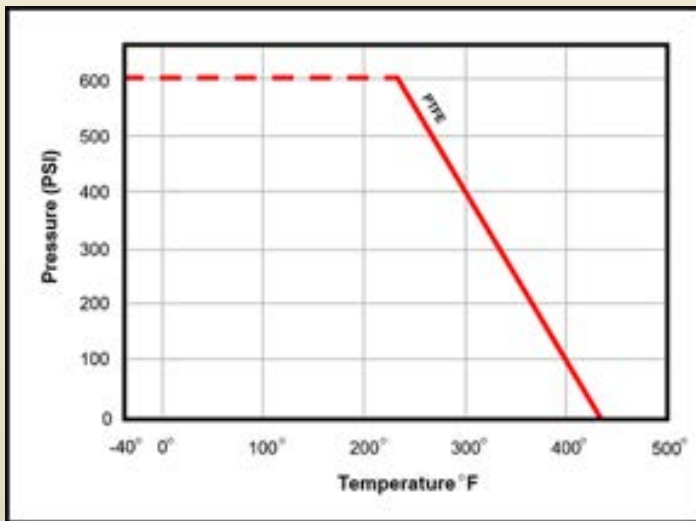
## Diameters: 2-1/2" - 4"

### DESIGN FEATURES:

- **Body:** Forged Brass
- **Port:** Full
- **Design:** Two Piece Body
- **Handle:** Locking Device
- **Ball:** 304 Stainless Steel
- **Seats:** PTFE
- **Stem:** Blow-Out Proof
- **2-1/2" - 4" Rated:** 600PSI Non-Shock WOG  
125PSI SWP

### APPLICABLE STANDARDS:

- Threaded Ends ANSI B1.20.1
- Conforms to MSS-SP-110
- UL/FM Approved



**⚠ WARNING:** This product can expose you to Lead, which is known to the State of California to cause cancer and birth defects or other reproductive harm. For more information go to [www.P65Warnings.ca.gov](http://www.P65Warnings.ca.gov). This product is not for use in potable water.

#### Cleveland Headquarters

One Merit Drive/PO Box 43127  
Cleveland, OH 44143  
TEL: 800.726.9800  
FAX: 855.MBFAXIT (623.2948)  
EMAIL: [mbsales@meritbrass.com](mailto:mbsales@meritbrass.com)

#### Dallas Distribution Center

10614 King William Drive  
Dallas, TX 75220  
TEL: 877.259.2591  
FAX: 877.259.2596  
EMAIL: [mbsalesTX@meritbrass.com](mailto:mbsalesTX@meritbrass.com)

#### Birmingham Distribution Center

220 Oxmoor Court  
Birmingham, AL 35209  
TEL: 855.912.0409  
FAX: 866.668.9168  
EMAIL: [mbsalesAL@meritbrass.com](mailto:mbsalesAL@meritbrass.com)

#### Sparks Distribution Center

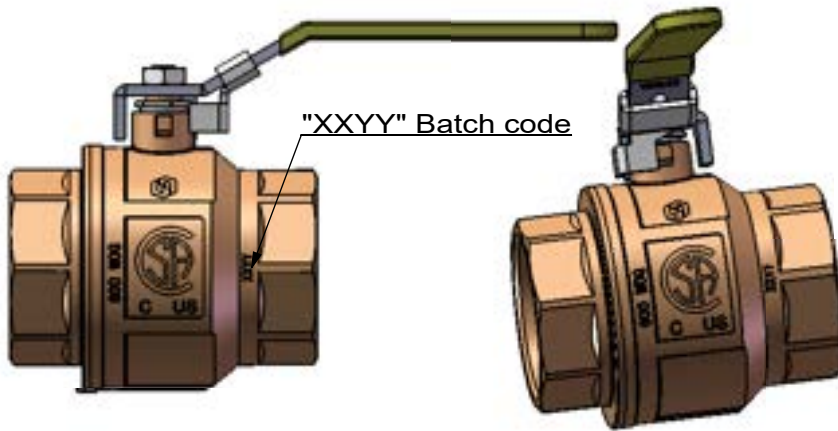
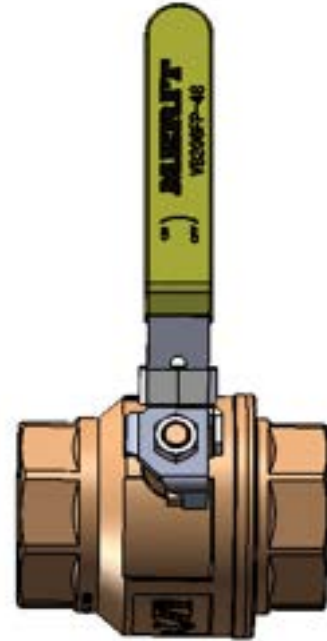
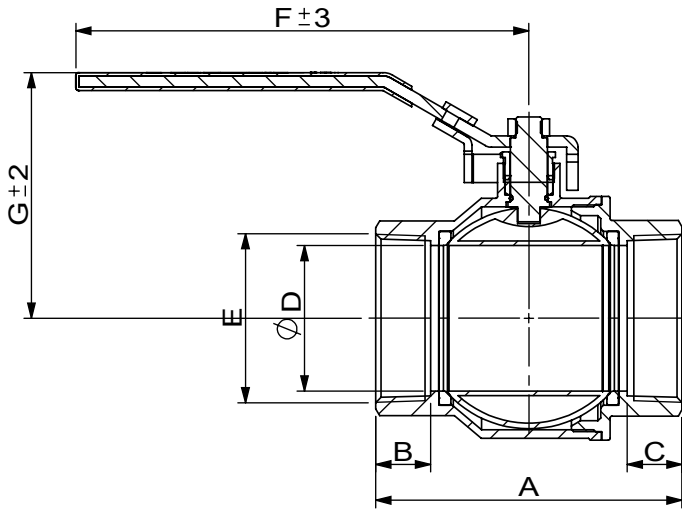
200 Vista Blvd., Suite #106  
Sparks, NV 89434  
TEL: 877.711.RENO (7366)  
FAX: 877.376.0093  
EMAIL: [mbsalesNV@meritbrass.com](mailto:mbsalesNV@meritbrass.com)

# MERIT BRASS

DIRECTING THE FLOW OF *Quality*

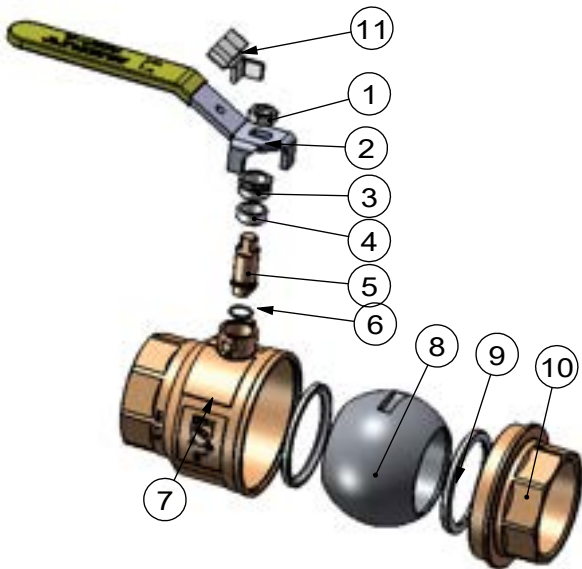
[www.meritbrass.com](http://www.meritbrass.com) • [www.MBWebXpress.com](http://www.MBWebXpress.com)





POSITION OF "OPEN"    POSITION OF "CLOSE"

PART NO.



No.	Part	Material	Qty.
1	Hex-nut	Steel	1
2	Handle	Steel	1
3	Packing nut	Brass	1
4	Packing gland	PTFE	1
5	Stem	C3600	1
6	O-ring	EPDM	1
7	Body	C3770	1
8	Ball	Stainless Steel	1
9	Seat	PTFE	2
10	Bonnet	C3770	1
11	Lock catch	Steel	1

Size	A(in)	B(in)	C(in)	D(in)	E	F(in)	G(in)	Weight(lb)	PART NO.
2-1/2"	5.551	1.063	1.063	∅ 2.5	2 1/2-8NPT	9.449	4.744	7.32	VB206FP-40
3"	6.378	1.142	1.142	∅ 3.031	3-8NPT	9.449	5.118	10.11	VB206FP-48
4"	7.543	1.201	1.201	∅ 3.937	4-8NPT	9.449	5.866	16.91	VB206FP-64



# MERIT VALVES



PRODUCT OVERVIEW  
*STAINLESS STEEL VALVES*



DIRECTING  
the FLOW  
of

*Quality*



# "K" SERIES



## *One* PIECE 150# BRACKET MOUNT FLANGED END BALL VALVE

- Size Range: 1/2" - 4"
- Pressure Rating: 150#
- CF8M Material
- Design Features: Mounting Pad; TFM1600 Ball Seat
- Port: Reduced
- End Type: Flanged



## *One* PIECE BALL VALVE

- Size Range: 1/4" - 2"
- Pressure Rating: 1000 WOG
- CF8M Material
- Design Features: Blow-Out Proof Stem
- Port: Double Reduced
- End Type: Threaded



## *Two* PIECE 150# & 300# DIRECT MOUNT FLANGED END BALL VALVE

- Size Range: 1/2" - 6"
- Pressure Rating: 150# & 300#
- CF8M Material
- Design Features: Mounting Pad; TFM1600 Ball Seat
- Port: Full
- End Type: Flanged



## *Two* PIECE 150# BRACKET MOUNT FLANGED END BALL VALVE

- Size Range: 1-1/2" - 6"
- Pressure Rating: 150#
- CF8M Material
- Design Features: Mounting Pad; TFM1600 Ball Seat
- Port: Full
- End Type: Flanged



## *Two* PIECE BALL VALVE

- Size Range: 1/4" - 3"
- Pressure Rating: 1000 WOG
- CF8M Material
- Design Features: Blow-Out Proof Stem
- Port: Full
- End Type: Threaded

## *Three* PIECE BALL VALVE

- Size Range: 1/4" - 3"
- Pressure Rating: 1000 WOG
- CF8M Material
- Design Features: Blow-Out Proof Stem
- Port: Full
- End Type: Threaded & Socket Weld



# “V” SERIES



## *One* PIECE BALL VALVE

- Size Range: 1/4" - 2"
- Pressure Rating: 800 WOG
- CF8M Material
- Design Features: Blow-Out Proof Stem
- Port: Reduced
- End Type: Threaded



## *Two* PIECE BALL VALVE

- Size Range: 1/4" - 2"
- Pressure Rating: 2000/1500 WOG
- CF8M Material
- Design Features: Blow-Out Proof Stem
- End Type: Threaded



## *Two* PIECE BALL VALVE

- Size Range: 1/4" - 3"
- Pressure Rating: 1000 WOG
- CF8M Material
- Design Features: Blow-Out Proof Stem
- Port: Full
- End Type: Threaded



## *Three* PIECE BALL VALVE

- Size Range: 1/4" - 3"
- Pressure Rating: 1000 WOG
- CF8M Material
- Design Feature: Blow-Out Proof Stem
- Port: Full
- End Type: Threaded & Socket Weld



## *Class 200*

### SWING CHECK VALVE

- Size Range: 1/4" - 3"
- 200 PSI Working Pressure at 350°F
- CF8M Material
- End Type: Threaded



## *Class 200* SWING CHECK WYE PATTERN VALVE

- Size Range: 1/4" - 3"
- 200 PSI Working Pressure at 350°F
- CF8M Material
- End Type: Threaded



## *Class 200* GATE VALVE

- Size Range: 1/2" - 2"
- 200 PSI Working Pressure at 350°F
- CF8M Material
- Design Feature: Screwed Bonnet & Non-Rising Stem
- Port: Full
- End Type: Threaded



## *Class 600* Y-STRAINER

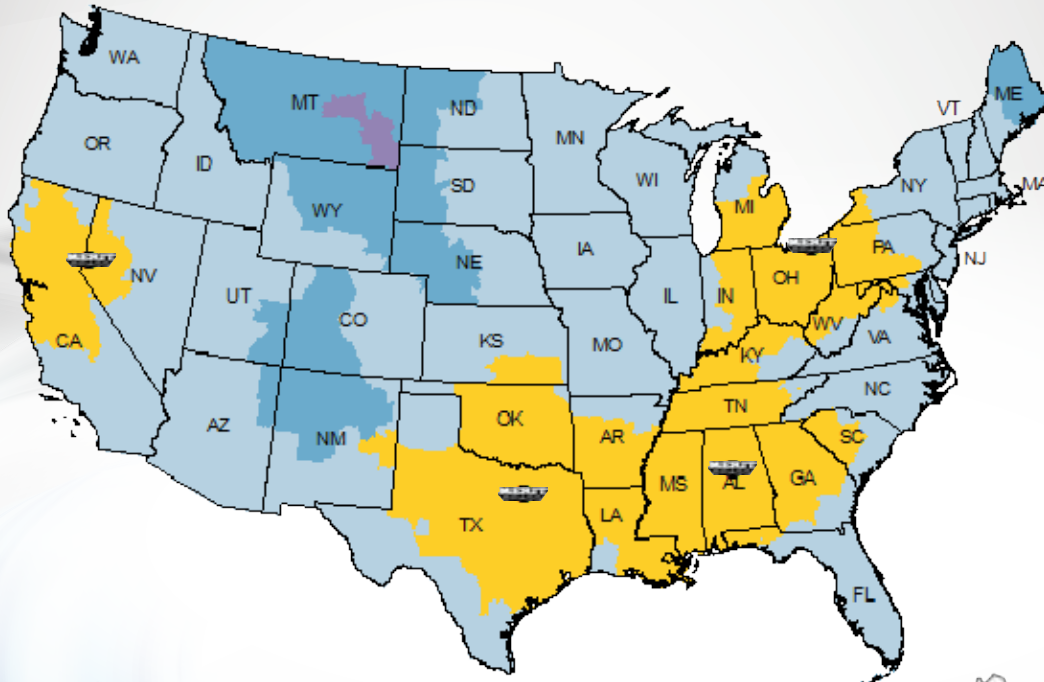
- Size Range: 1/4" - 3"
- 600 PSI Working Pressure at 350°F
- CF8M Material
- End Type: Threaded



As reflected in the nipples we manufacture, Merit's Stainless Steel Valve Line also continues to demonstrate Merit's commitment to high quality standards. Since 1937, Merit has sought out vendors with impeccable reputations and a strong commitment to quality.

Contact our Sales Department today for a sample of Merit Brass' Stainless Steel Valve Line!

# SHIPPING TIMES



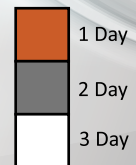
## FedEx



\*FedEx is Merit's Primary Carrier



## UPS



### Cleveland Headquarters

One Merit Drive/PO Box 43127  
Cleveland, OH 44143  
800.726.9800 (t) | 800.726.9880 (f)  
sales@meritbrass.com

### Dallas Distribution Center

10614 King William Dr.  
Dallas, TX 75220  
877.259.2591 (t) | 877.259.2596 (f)  
mbsalesTX@meritbrass.com

### Sparks Distribution Center

200 Vista Blvd., Suite #106  
Sparks, NV 89434  
877.711. RENO (7366) (t) | 877.376.0093 (f)  
mbsalesNV@meritbrass.com

### Birmingham Distribution Center

220 Oxmoor Court  
Birmingham, AL 35209  
855.912.0409 (t) | 866.668.9168 (f)  
mbsalesAL@meritbrass.com

Merit Brass Headquarters Has An ISO 9001:2015 Registered Quality Management System

www.meritbrass.com • www.mbwebxpress.com

Follow Us On Social Media





# "K" SERIES



## *One* PIECE 150# BRACKET MOUNT FLANGED END BALL VALVE

- Size Range: 1/2" - 4"
- Pressure Rating: 150#
- CF8M Material
- Design Features: Mounting Pad; TFM1600 Ball Seat
- Port: Reduced
- End Type: Flanged



## *One* PIECE BALL VALVE

- Size Range: 1/4" - 2"
- Pressure Rating: 1000 WOG
- CF8M Material
- Design Features: Blow-Out Proof Stem
- Port: Double Reduced
- End Type: Threaded



## *Two* PIECE 150# & 300# DIRECT MOUNT FLANGED END BALL VALVE

- Size Range: 1/2" - 6"
- Pressure Rating: 150# & 300#
- CF8M Material
- Design Features: Mounting Pad; TFM1600 Ball Seat
- Port: Full
- End Type: Flanged



## *Two* PIECE 150# BRACKET MOUNT FLANGED END BALL VALVE

- Size Range: 1-1/2" - 6"
- Pressure Rating: 150#
- CF8M Material
- Design Features: Mounting Pad; TFM1600 Ball Seat
- Port: Full
- End Type: Flanged



## *Two* PIECE BALL VALVE

- Size Range: 1/4" - 3"
- Pressure Rating: 1000 WOG
- CF8M Material
- Design Features: Blow-Out Proof Stem
- Port: Full
- End Type: Threaded



## *Three* PIECE BALL VALVE

- Size Range: 1/4" - 3"
- Pressure Rating: 1000 WOG
- CF8M Material
- Design Features: Blow-Out Proof Stem
- Port: Full
- End Type: Threaded & Socket Weld

# “V” SERIES



## *One* PIECE BALL VALVE

- Size Range: 1/4" - 2"
- Pressure Rating: 800 WOG
- CF8M Material
- Design Features: Blow-Out Proof Stem
- Port: Reduced
- End Type: Threaded



## *Two* PIECE BALL VALVE

- Size Range: 1/4" - 2"
- Pressure Rating: 2000/1500 WOG
- CF8M Material
- Design Features: Blow-Out Proof Stem
- End Type: Threaded



## *Two* PIECE BALL VALVE

- Size Range: 1/4" - 3"
- Pressure Rating: 1000 WOG
- CF8M Material
- Design Features: Blow-Out Proof Stem
- Port: Full
- End Type: Threaded



## *Three* PIECE BALL VALVE

- Size Range: 1/4" - 3"
- Pressure Rating: 1000 WOG
- CF8M Material
- Design Feature: Blow-Out Proof Stem
- Port: Full
- End Type: Threaded & Socket Weld



## *Class 200*

### SWING CHECK VALVE

- Size Range: 1/4" - 3"
- 200 PSI Working Pressure at 350°F
- CF8M Material
- End Type: Threaded



## *Class 200* SWING CHECK WYE PATTERN VALVE

- Size Range: 1/4" - 3"
- 200 PSI Working Pressure at 350°F
- CF8M Material
- End Type: Threaded



## *Class 200* GATE VALVE

- Size Range: 1/2" - 2"
- 200 PSI Working Pressure at 350°F
- CF8M Material
- Design Feature: Screwed Bonnet & Non-Rising Stem
- Port: Full
- End Type: Threaded



## *Class 600* Y-STRAINER

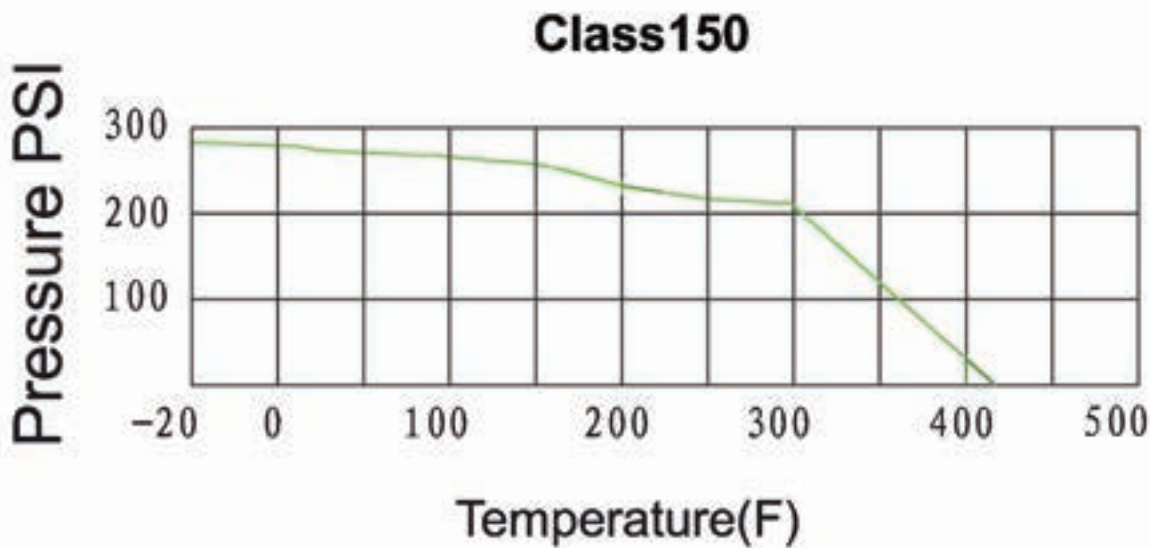
- Size Range: 1/4" - 3"
- 600 PSI Working Pressure at 350°F
- CF8M Material
- End Type: Threaded

**DESIGN FEATURES:**

- Built-in ISO 5211 Mounting Pad for Easy Automation
- Anti-Static Devices for Ball-Stem-Body
- Blow-out Proof Stem
- Pressure Balance Hole in Ball Slot
- Casting Boss on Body for Draining
- Options: 1. Actuator 2. Limit Switch 3. Positioner

**APPLICABLE STANDARDS:**

- Design: ASME B16.34, API 608
- Face to Face: ASME B16.10
- Wall Thickness: ASME B16.34
- End Flange: ASME B16.5
- Inspection & Testing: API 598, API 6D



**Cv, Weights & Port**

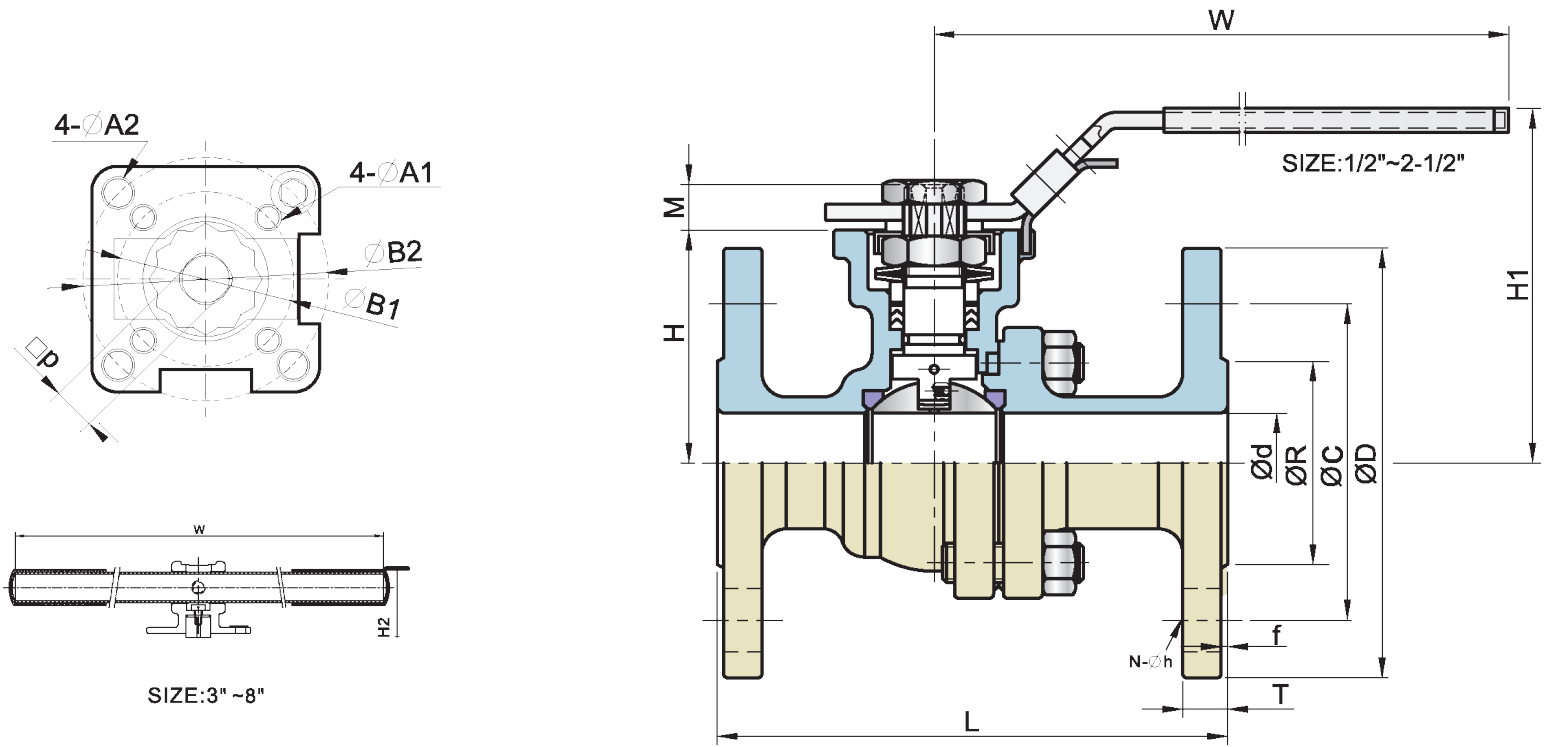
Size	Cv	Wt (Lbs)	Port
1/2"	18	3.21	0.59
3/4"	36	4.97	0.79
1"	48	6.56	0.98
1-1/4"	72	7.57	1.26
1-1/2"	120	12.83	1.50
2"	190	18.59	1.97
2-1/2"	450	31.83	2.52
3"	600	38.94	2.99
4"	1100	67.47	3.93
6"	2600	161.07	5.90
8"	4200	276.96	7.87

**Torques(in-lbs)**

Size	Torque
1/2"	44
3/4"	53
1"	89
1-1/4"	115
1-1/2"	168
2"	252
2-1/2"	398
3"	637
4"	974
6"	2708
8"	3806

**Headquarters:**  
 One Merit Drive  
 PO Box 43127  
 Cleveland, OH 44143  
 TEL: 216 261 9800  
 TOLL FREE TEL: 800 726 9800  
 TOLL FREE FAX: 855 MBFAXIT  
 Email: [mbsales@meritbrass.com](mailto:mbsales@meritbrass.com)  
 Websites: [www.meritbrass.com](http://www.meritbrass.com)  
[www.MBWebXpress.com](http://www.MBWebXpress.com)  
[www.MBLeadFree.com](http://www.MBLeadFree.com)

KFDMV2015FP  
 150#



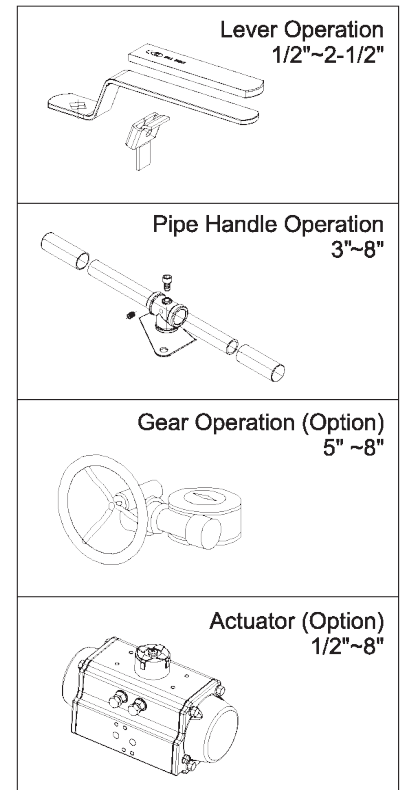
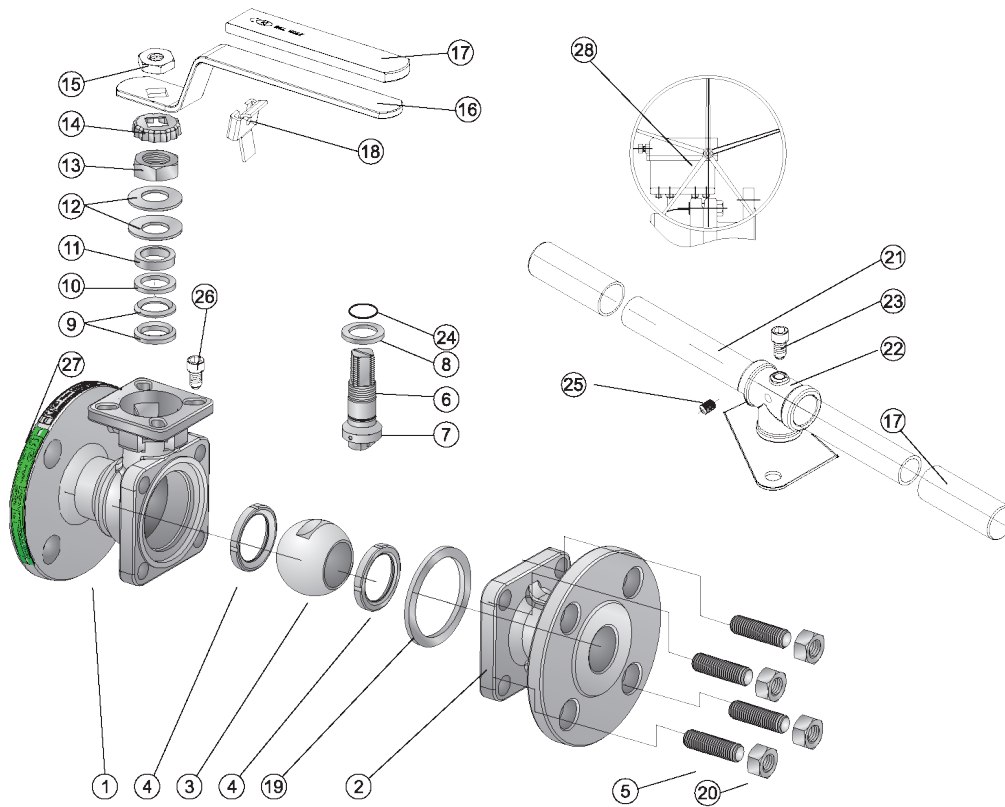
ASME CLASS 150

KFDMV2015FP

UNIT: INCH

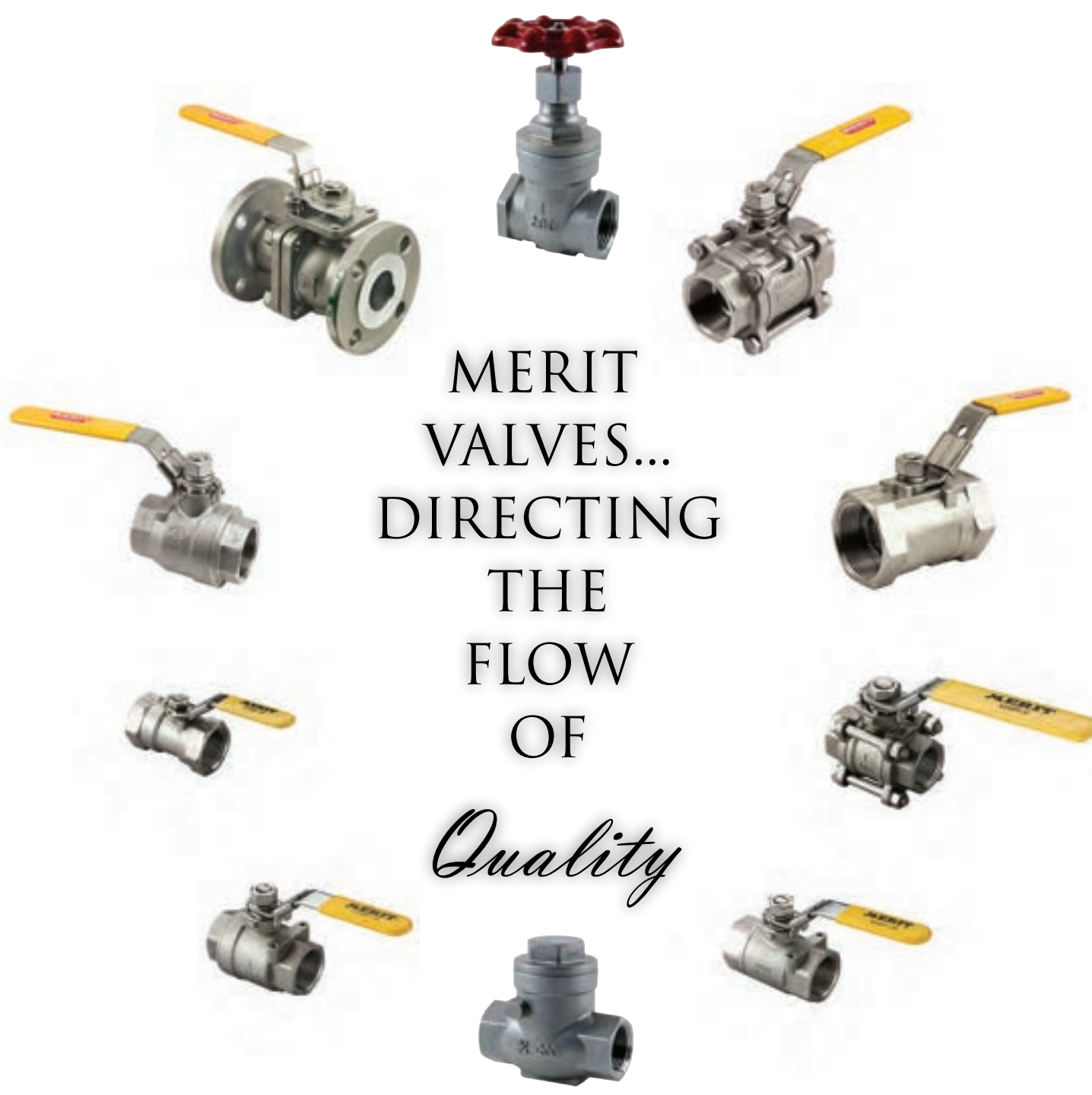
SIZE	∅d	L	∅R	∅D	∅C	T	f	N	∅h	H	H1	H2	W	M	P	A1	A2	B1	B2	X	Y	ISO 5211	P-Actuator	E-Actuator	Pressure
1/2"	0.59	4.25	1.38	3.50	2.38	0.40	0.08	4	0.63	1.89	5.71	3.07	5.71	0.35	0.35	0.24	0.24	1.42	1.65	5.67	2.83	F03-F04	KP50	KQ006	80PSI
3/4"	0.79	4.61	1.69	3.88	2.76	0.43	0.08	4	0.63	2.09	5.91	3.31	5.71	0.35	0.35	0.24	0.28	1.42	1.97	5.67	2.83	F03-F05	KP50	KQ006	80PSI
1"	0.98	5.00	2.01	4.25	3.12	0.46	0.08	4	0.63	2.30	6.63	3.52	6.89	0.43	0.43	0.24	0.28	1.65	1.97	6.46	3.31	F04-F05	KP63	KQ006	80PSI
1-1/4"	1.26	5.51	2.50	4.61	3.50	0.52	0.08	4	0.63	2.80	7.13	3.98	6.89	0.43	0.43	0.24	0.35	1.65	2.76	6.46	3.31	F04-F07	KP63	KQ006	80PSI
1-1/2"	1.50	6.50	2.88	5.00	3.88	0.57	0.08	4	0.63	2.99	8.03	4.21	7.48	0.55	0.55	0.28	0.35	1.97	2.76	8.19	3.78	F05-F07	KP75	KQ008	80PSI
2"	1.97	7.01	3.62	6.00	4.75	0.64	0.08	4	0.75	3.19	8.23	4.41	7.48	0.55	0.55	0.28	0.35	1.97	2.76	8.19	3.78	F05-F07	KP75	KQ008	80PSI
2-1/2"	2.48	7.48	4.12	7.00	5.50	0.70	0.08	4	0.75	4.00	9.59	5.91	10.43	0.67	0.67	0.35	0.43	2.76	4.02	9.72	4.25	F07-F10	KP88	KQ015	80PSI
3"	2.99	7.99	5.00	7.50	6.00	0.77	0.08	4	0.75	4.39	10.45	6.93	11.81	0.67	0.67	0.35	0.43	2.76	4.02	10.55	4.84	F07-F10	KP100	KQ015	80PSI
4"	3.94	9.02	6.18	9.00	7.50	0.96	0.08	8	0.75	5.51	13.19	8.03	15.75	0.87	0.87	N/A	0.43	N/A	4.02	13.58	5.94	F10	KP125	KQ020	80PSI
5"	4.92	14.02	7.32	10.00	8.50	0.96	0.08	8	0.88	7.20	16.30	10.06	23.62	1.06	1.06	0.55	N/A	4.92	N/A	17.72	7.95	F12	KP160	KQ030	80PSI
6"	5.91	15.51	8.50	11.00	9.50	1.02	0.08	8	0.88	7.99	17.13	10.83	31.50	1.06	1.06	0.55	N/A	4.92	N/A	17.72	7.95	F12	KP160	KQ030	80PSI
8"	7.87	17.99	10.63	13.50	11.75	1.14	0.08	8	0.88	9.94	21.87	12.91	31.50	1.06	1.06	0.55	N/A	4.92	N/A	21.46	8.82	F12	KP200	KQ050	80PSI





MATERIAL OF CONSTRUCTION

NO.	PART	MATERIAL		
		ANSI/JIS/DIN	ANSI/JIS/DIN	ANSI/JIS/DIN
1	Body	A351-CF8M/SCS14A/1.4408	A351-CF8/SCS13A/1.4308	A216-WCB/SCPH2/1.0619
2	End Cap	A351-CF8M/SCS14A/1.4408	A351-CF8/SCS13A/1.4308	A216-WCB/SCPH2/1.0619
3	Ball	A351-CF8M/SCS14A/1.4408	A351-CF8/SCS13A/1.4308	
4	Ball Seat	TFM1600/PTFE/RTFE		
5	Bolting	A193-B8 (For ANSI ball valves) / A2-70 (For DIN ball valves)		A193-B7 (For ANSI ball valves) / 8.8 (For DIN/JIS ball valves)
6	Stem	SUS316	SUS304	
7	Anti-Static	SUS316	SUS304	
8	Thrust Washer	PTFE		
9	Stem Packing	PTFE		
10	Bushing	50% SS + 50% PTFE		
11	Gland	SUS316		
12	Belleville Washer	SUS301		
13	Stem Nut	A194-8		
14	Stop-Lock-Cap	SUS304		
15	Handle Nut	A194-8		
16	Lever	SUS304		
17	Handle Sleeve	VINYL PLASTIC		
18	Lock Device	SUS304		
19	Body Gasket	PTFE		
20	Nut	A194-8 (For ANSI ball valves) / A2-70 (For DIN/JIS ball valves)		194-2H (For ANSI ball valves) / 8.8 (For DIN/JIS ball valves)
21	Pipe Handle (3"~8")	A53+Zn PLATED		
22	Handle Adapter (3"~8")	CF8		
23	Bolting (3"~8")	A2-70		
24	O-Ring	FKM		
25	Set Screw (3"~8")	SUS304		
26	Stop Bolt	A193-B8		
27	Nameplate	SUS304		
28	Worm Gear	WCB		



MERIT  
VALVES...  
DIRECTING  
THE  
FLOW  
OF  
*Quality*

VISIT US AT [WWW.MERITBRASS.COM](http://WWW.MERITBRASS.COM) · [WWW.MBWEBXPRESS.COM](http://WWW.MBWEBXPRESS.COM) · [WWW.MBLEADFREE.COM](http://WWW.MBLEADFREE.COM)

**CLEVELAND HEADQUARTERS:**

**Local Tel:** 216-261-9800  
**Toll Free Tel:** 800-726-9800  
**Toll Free Fax:** 855-MBFAXIT  
**E-Mail:** [mbsales@meritbrass.com](mailto:mbsales@meritbrass.com)  
**Address:** P.O. Box 43127, One Merit Drive  
 Cleveland, OH 44143

**DALLAS DISTRIBUTION CENTER:**

**Toll Free Tel:** 877-259-2591  
**Toll Free Fax:** 877-259-2596  
**E-Mail:** [mbsalesTX@meritbrass.com](mailto:mbsalesTX@meritbrass.com)  
**Address:** 10614 King William Drive  
 Dallas, TX 75220

**RENO DISTRIBUTION CENTER:**

**Toll Free Tel:** 855-912-0408  
**Toll Free Fax:** 877-376-0093  
**E-Mail:** [mbsalesNV@meritbrass.com](mailto:mbsalesNV@meritbrass.com)  
**Address:** 200 Vista Blvd., Suite #106  
 Sparks, NV 89434

**BIRMINGHAM DISTRIBUTION CENTER:**

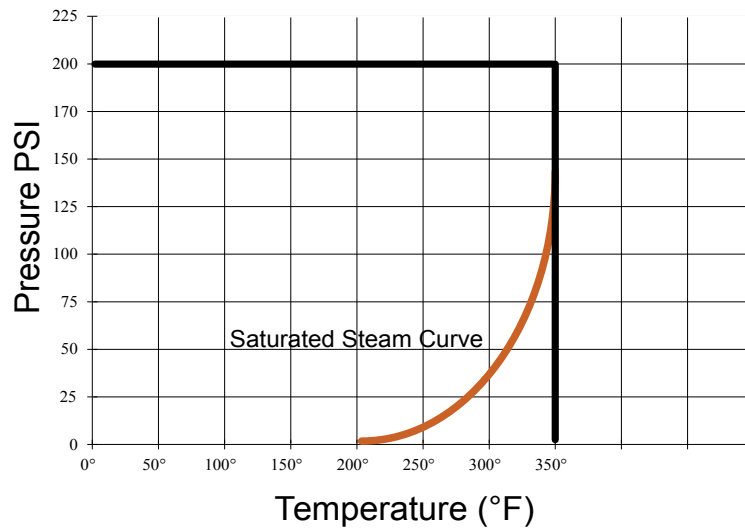
**Toll Free Tel:** 855-912-0409  
**Toll Free Fax:** 866-668-9168  
**E-Mail:** [mbsalesAL@meritbrass.com](mailto:mbsalesAL@meritbrass.com)  
**Address:** 220 Oxmoor Court  
 Birmingham, AL 35209

Merit Brass Cleveland Headquarters Has An ISO 9001:2015 Registered Quality Management System



**APPLICABLE STANDARDS:**

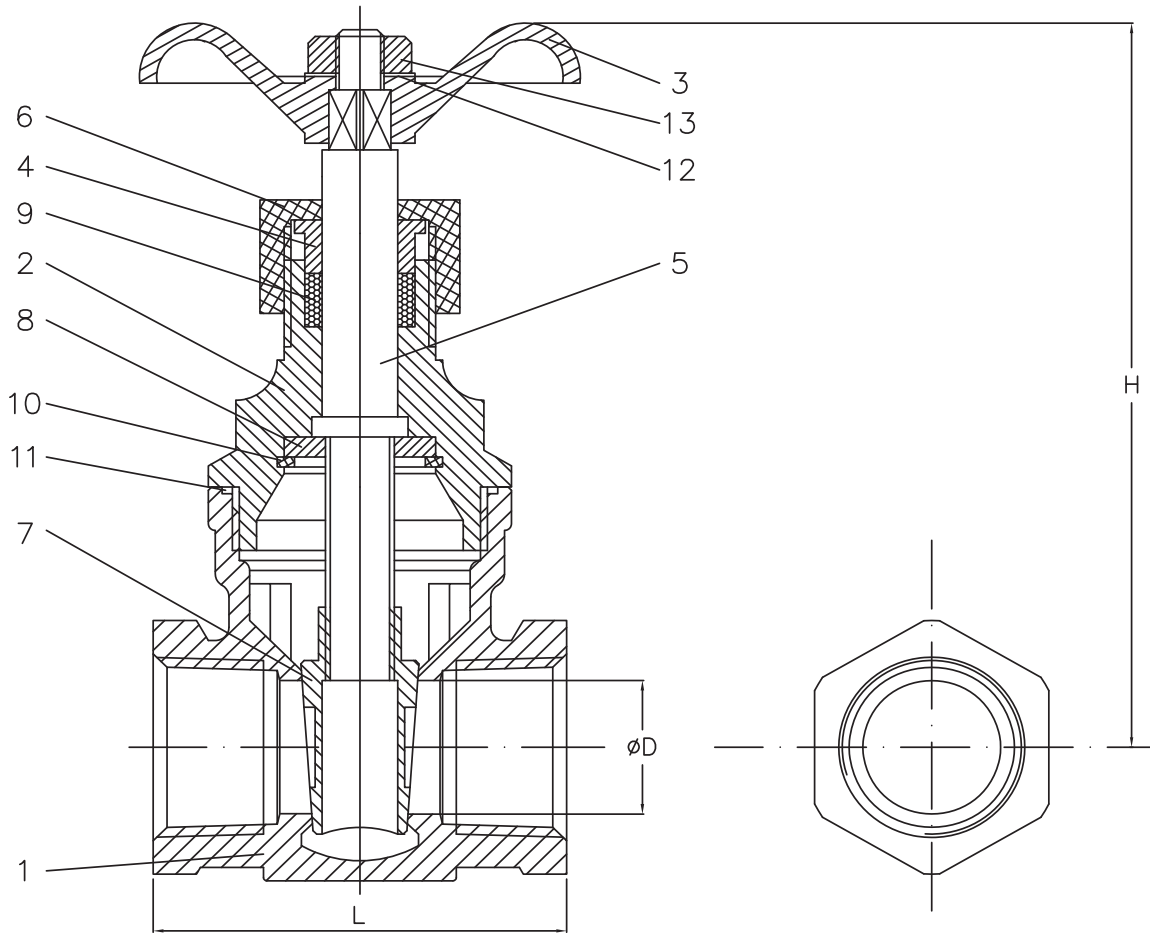
- Design: ASME/ANSI B16.34
- Testing: API 598
- 200 PSI Working Pressure at 350°F
- 316 Stainless Steel
- Screwed Bonnet
- Solid Wedge Disc
- Non-Rising Stem
- Hydrostatic Shell Test at 300 PSI
- Hydrostatic Seat Test at 220 PSI
- Threaded Ends



**Cv, Weights & Port**

Size	Cv	Wt (Lbs)	Port
1/2"	17.6	0.97	0.59
3/4"	32	1.43	0.79
1"	54	1.75	0.98
1-1/4"	97	2.98	1.26
1-1/2"	130	3.73	1.50
2"	230	5.34	1.97

Headquarters:  
 One Merit Drive  
 PO Box 43127  
 Cleveland, OH 44143  
 Tel: 216.261.9800  
 Toll Free Tel: 800.726.9800  
 Toll Free Fax: 855.MBFAXIT (623.2948)  
 Email: [mbsales@meritbrass.com](mailto:mbsales@meritbrass.com)  
 Websites: [www.meritbrass.com](http://www.meritbrass.com)  
[www.MBWebXpress.com](http://www.MBWebXpress.com)



NO.	PART NAME	QTY	MATERIAL
1	BODY	1	ASTMA351 CF8M
2	BONNET	1	ASTMA351 CF8M
3	HAND WHEEL	1	ALUMINUM
4	GLAND	1	S.S.316
5	STEM	1	S.S.316
6	PACKING NUT	1	S.S.304
7	DISC	1	S.S.316

NO.	PART NAME	QTY	MATERIAL
8	STEM WASHER	1	S.S.316
9	GLAND PACKING	1	TEFLON
10	SNAP RING	1	SUS316
11	JOINT GASKET	1	TEFLON
12	NAME PLATE	1	ALUMINUM
13	WHEEL NUT	1	S.S.304

Unit: Inch

Size	D Port	L	H
1/2"	0.59	2.17	3.74
3/4"	0.79	2.36	4.33
1"	0.98	2.56	4.72
1-1/4"	1.26	3.15	5.31
1-1/2"	1.50	3.35	5.71
2"	1.97	3.74	6.69

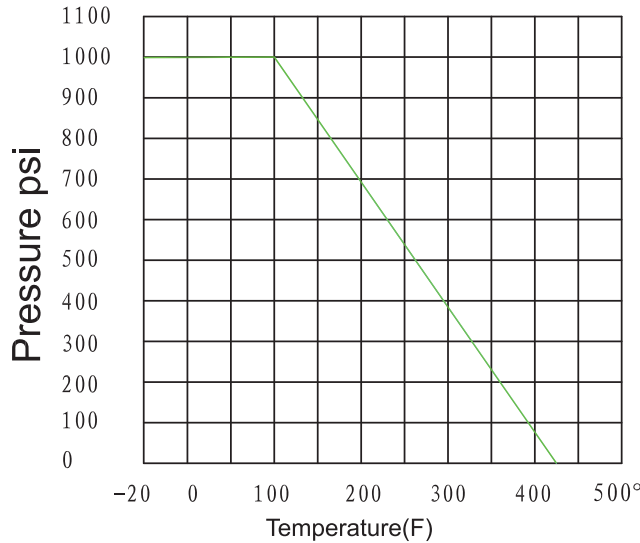


**DESIGN FEATURES:**

- Blow-out Proof Stem
- Pressure Balance Hole in Ball Slot
- Various Thread Standards Available
- Casting Approved by TÜV AD 2000 - Merkblatt W0

**APPLICABLE STANDARDS:**

- Design : ASME B16.34, MSS SP-110
- Wall Thickness : EN 12516 - 3
- Pipe Thread **KV310FP**: ASME B1.20.1
- Socket Weld **KSWV310FP**: ASME B16.11
- Inspection & Testing: MSS SP-110



**Cv, Weights & Port**

Size	Cv	Wt (Lbs)	Port
1/4"	N/A	1.08	0.42
3/8"	N/A	0.99	0.50
1/2"	18	1.08	0.59
3/4"	36	1.70	0.79
1"	48	2.69	0.98
1-1/4"	72	4.10	1.26
1-1/2"	120	5.80	1.50
2"	190	8.94	1.97
2-1/2"	450	17.03	2.50
3"	600	25.15	2.99

KV310FP  
Threaded

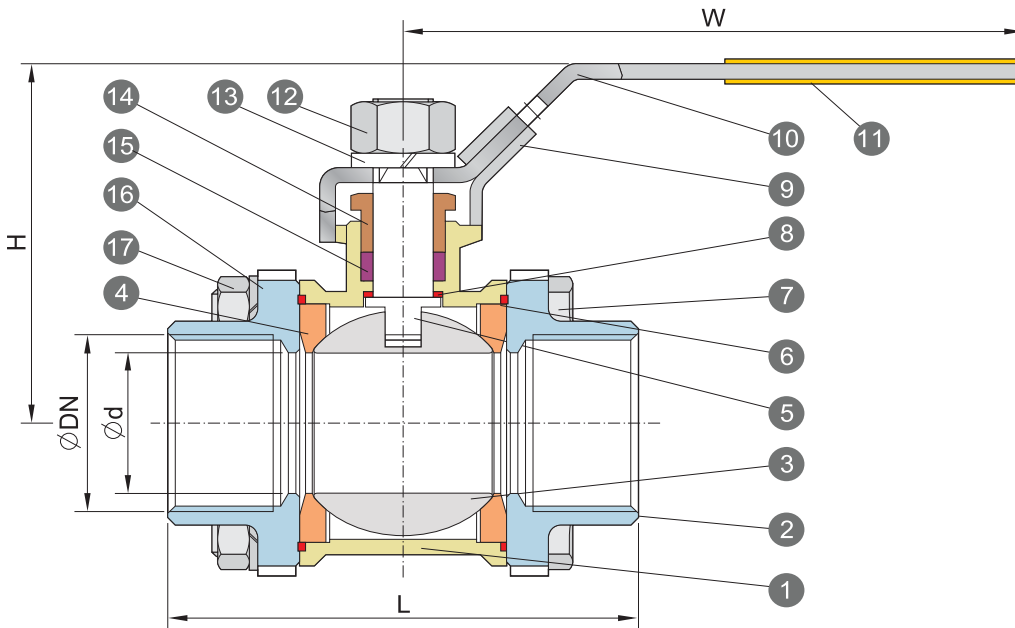
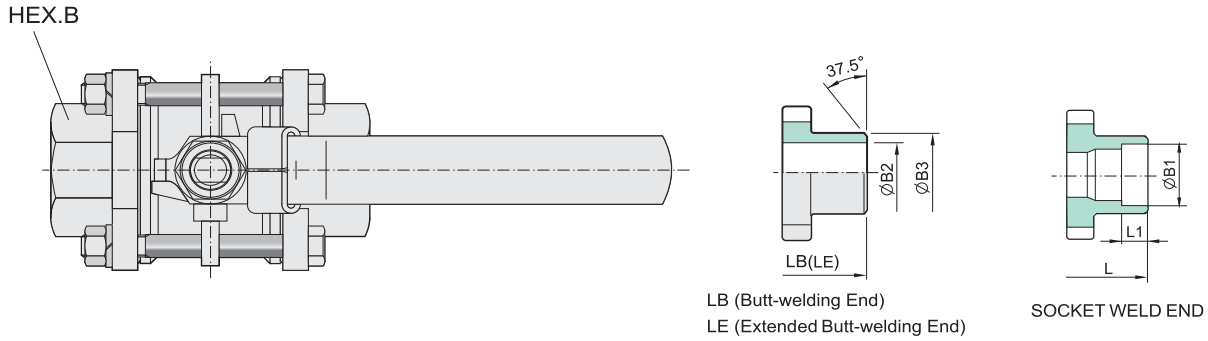
**Torque (in-lbs)**

Size	Cv	Wt (Lbs)	Port
1/4"	N/A	1.02	0.42
3/8"	N/A	1.10	0.50
1/2"	18	1.39	0.59
3/4"	36	1.68	0.79
1"	48	2.60	0.98
1-1/4"	72	4.06	1.26
1-1/2"	120	5.85	1.50
2"	190	8.43	1.97
2-1/2"	450	17.83	2.50
3"	600	23.52	2.99

KSWV310FP  
Socket Weld

Size	Torque
1/4"	40
3/8"	40
1/2"	44
3/4"	53
1"	89
1-1/4"	115
1-1/2"	168
2"	252
2-1/2"	398
3"	637

Headquarters:  
One Merit Drive  
PO Box 43127  
Cleveland, OH 44143  
Tel: 216.261.9800  
Toll Free Tel: 800.726.9800  
Toll Free Fax: 855.MBFAXIT (623.2948)  
Email: mbsales@meritbrass.com  
Websites: www.meritbrass.com  
www.MBWebXpress.com



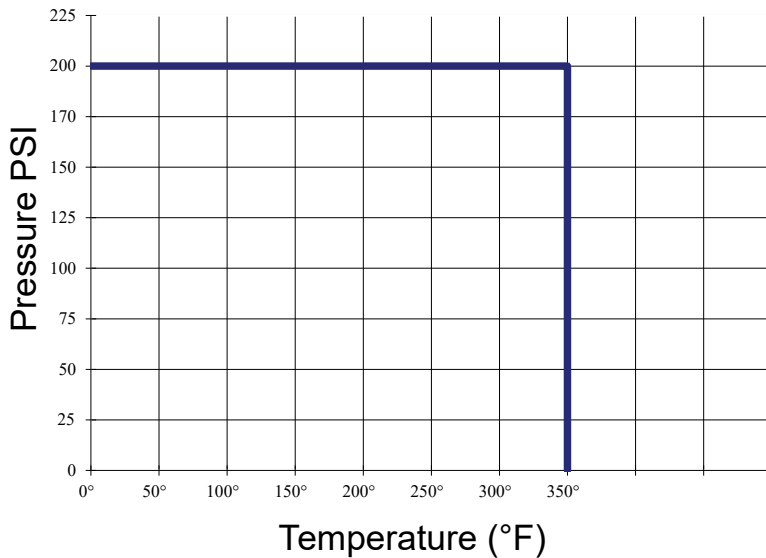
NO.	PART NAME	MATERIALS		
1	Body	CF8M	CF8	WVB
2	Cap (Thread)	CF8M	CF8	WCB
	Cap (Welding)	CF3M		
3	Ball	CF8M	CF8	
4	Ball Seat	PTFE		
5	Stem	SUS 316	SUS 304	
6	Body Gasket	PTFE		
7	Bolt	A193-B8		
8	Thrust Washer	PTFE		
9	Locking Device	SUS 304		

NO.	PART NAME	MATERIALS
10	Lever	SUS 304
11	Lever Sleeve	Vinyl Plastic
12	Stem Nut	A194-8
13	Stem Washer	SUS 304
14	Gland Nut	SUS 304
15	V-Ring Packing	PTFE
16	Bolt Washer	SUS 304
17	Bolt Nut	A194-8

SIZE	φd	L	LB	LE	H	W	L1	φ B1	φ B2	φ B3	HEX.B	φDN
1/4"	0.42	2.57	2.57	6.50	2.26	3.94	0.39	0.56	0.37	0.71	0.93	NPT
3/8"	0.50	2.57	2.57	6.50	2.26	3.94	0.39	0.67	0.49	0.71	0.93	
1/2"	0.59	2.74	2.95	6.50	2.26	3.94	0.39	0.86	0.62	0.87	1.10	
3/4"	0.79	3.15	3.54	7.48	2.48	5.08	0.51	1.07	0.82	1.10	1.36	
1"	0.98	3.54	3.94	8.50	2.97	6.14	0.51	1.34	1.05	1.34	1.65	
1-1/4"	1.26	4.33	4.33	9.02	3.19	6.14	0.63	1.69	1.38	1.69	2.05	
1-1/2"	1.50	4.72	4.92	9.49	3.70	7.19	0.63	1.93	1.61	1.97	2.30	
2"	1.97	5.51	5.91	11.50	4.11	7.19	0.67	2.42	2.07	2.40	2.81	
2-1/2"	2.50	7.28	7.48	12.99	5.16	9.92	0.67	2.91	2.47	2.99	3.41	
3"	2.99	8.07	8.66	14.02	5.47	9.92	0.67	3.54	3.07	3.62	3.98	

**APPLICABLE STANDARDS:**

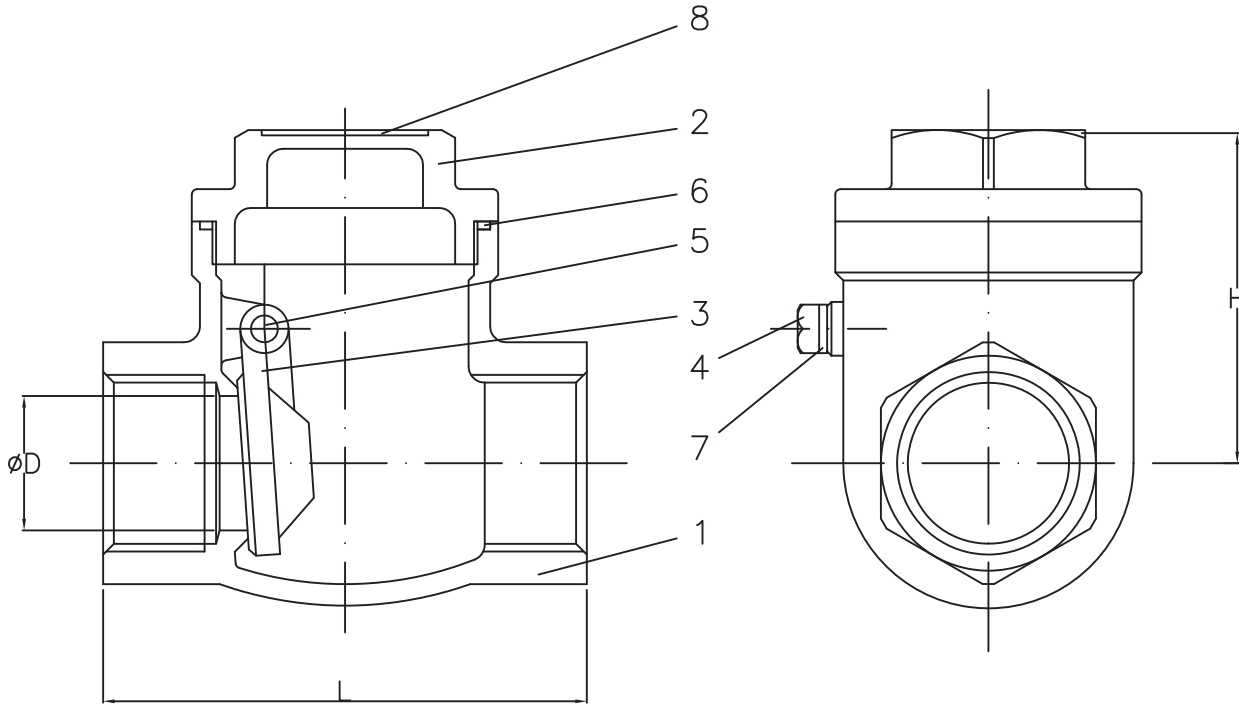
- Design: ASME B16.34
- Testing: API 598
- 200 PSI Working Pressure at 350°F



**Cv, Weights & Port**

Size	Cv	Wt (Lbs)	Port
1/4"	5.30	0.52	0.43
3/8"	5.30	0.49	0.43
1/2"	6.90	0.62	0.59
3/4"	16.30	1.01	0.79
1"	30	1.60	0.98
1-1/4"	49	2.56	1.26
1-1/2"	70	3.40	1.50
2"	130	5.78	1.97
2-1/2"	205	12.13	2.56
3"	306	15.34	3.15

Headquarters:  
 One Merit Drive  
 PO Box 43127  
 Cleveland, OH 44143  
 Tel: 216.261.9800  
 Toll Free Tel: 800.726.9800  
 Toll Free Fax: 855.MBFAXIT (623.2948)  
 Email: sales@meritbrass.com  
 Websites: www.meritbrass.com  
 www.MBWebXpress.com



Unit: Inch

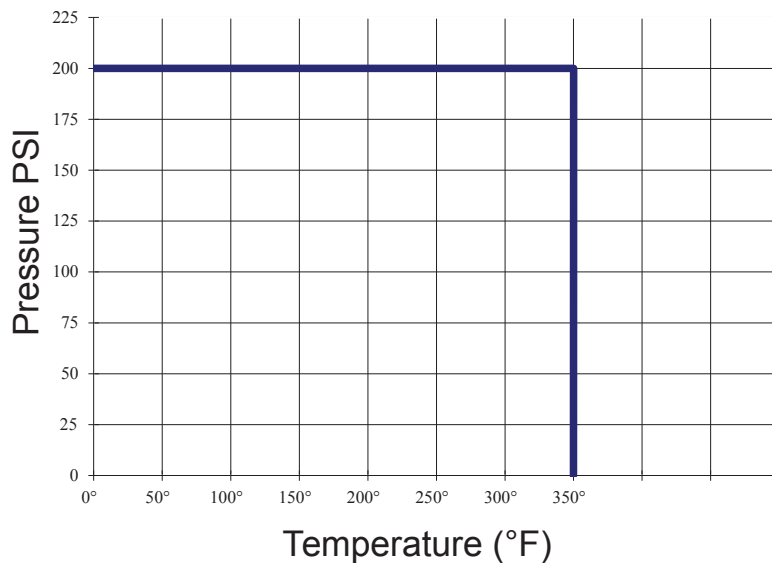
NO	PART NAME	QTY	MATERIAL
1	BODY	1	ASTM A351 CF8M
2	CAP	1	ASTM A351 CF8M
3	DISC	1	ASTM A351 CF8M
4	PLUG	1	SUS316
5	HINGE PIN	1	SUS316
6	JOINT GASKET	1	TEFLON
7	GASKET	1	TEFLON
8	NAME PLATE	1	ALUMINUM

Size	D Port	L	H
1/4"	0.43	2.36	1.63
3/8"	0.43	2.36	1.63
1/2"	0.59	2.56	1.89
3/4"	0.79	3.17	2.17
1"	0.98	3.54	2.44
1-1/4"	1.26	4.13	2.76
1-1/2"	1.50	4.72	3.15
2"	1.97	5.51	3.54
2-1/2"	2.56	7.09	4.53
3"	3.15	7.87	4.92



### APPLICABLE STANDARDS:

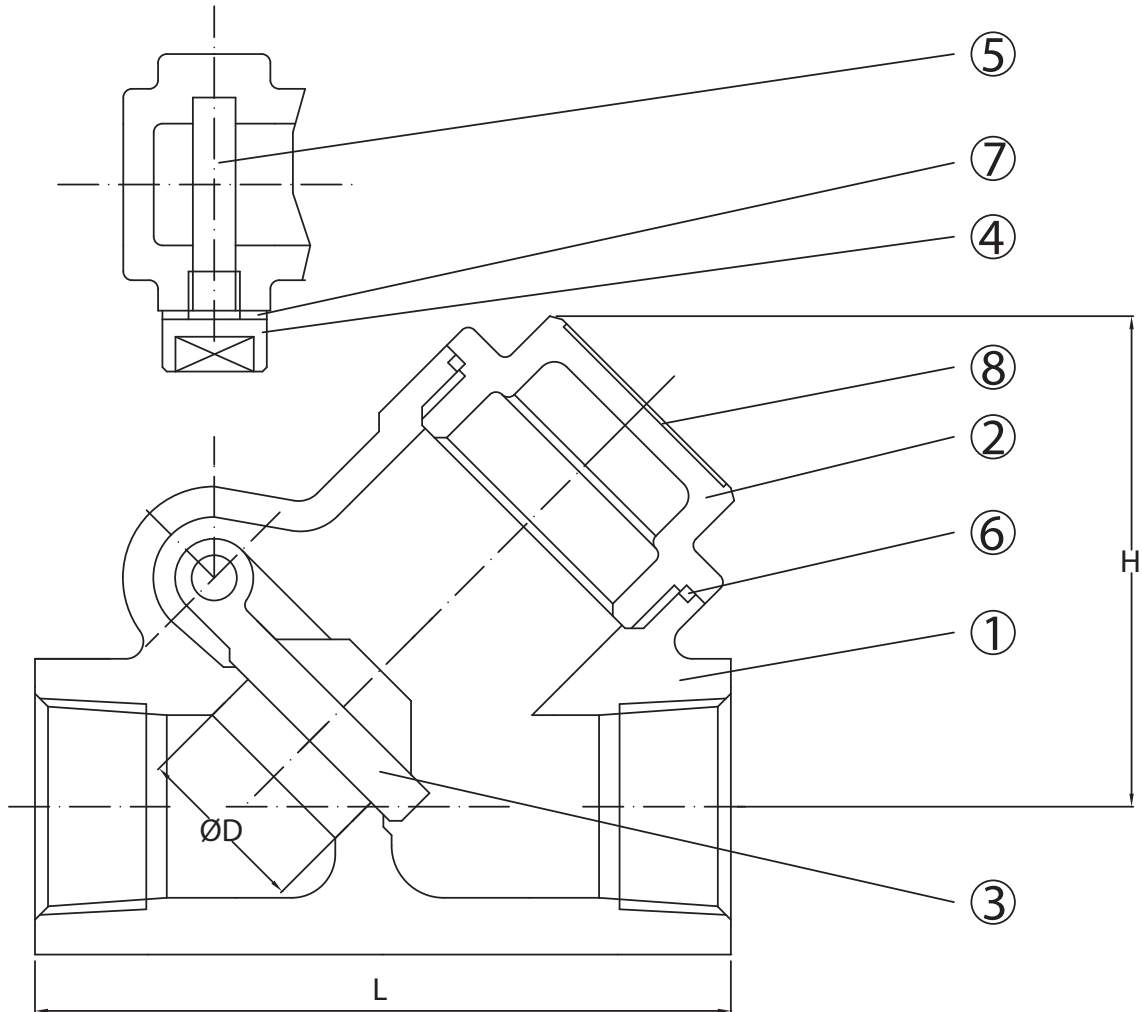
- Design: ASME B16.34
- Testing: API 598
- 200 PSI Working Pressure at 350°F



### Cv, Weights & Port

Size	Cv	Wt (Lbs)	Port
1/2"	3.5	0.74	0.59
3/4"	6.5	1.16	0.79
1"	9.5	1.86	0.98
1-1/4"	18.5	2.58	1.26
1-1/2"	24	3.90	1.50
2"	45	5.64	1.97

Headquarters:  
 One Merit Drive  
 PO Box 43127  
 Cleveland, OH 44143  
 TEL: 216.261.9800  
 TEL: 800.726.9800  
 FAX: 855.MBFAXIT (623.2948)  
 Email: [sales@meritbrass.com](mailto:sales@meritbrass.com)  
 Websites: [www.meritbrass.com](http://www.meritbrass.com)  
[www.MBWebXpress.com](http://www.MBWebXpress.com)



Unit: Inch

NO	PART NAME	QTY	MATERIAL
1	BODY	1	ASTMA351 CF8M
2	BONNET	1	ASTM A351 CF8M
3	DISC	1	ASTM A351 CF8M
4	PLUG	1	SUS316
5	HINGE PIN	1	SUS316
6	GASKET PACKING	1	PTFE
7	GASKET PACKING	1	PTFE
8	NAME PLATE	1	AL

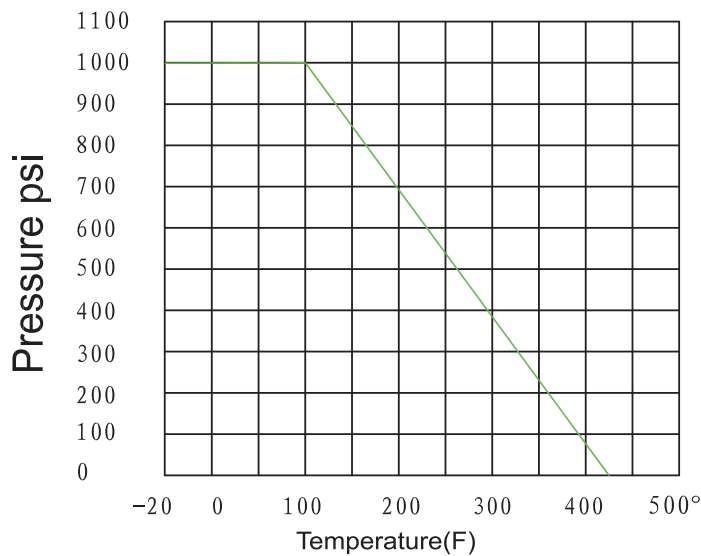
Size	D Port	L	H
1/2"	0.59	2.56	1.81
3/4"	0.79	3.15	2.20
1"	0.98	3.54	2.60
1-1/4"	1.26	4.13	2.99
1-1/2"	1.50	4.72	3.54
2"	1.97	5.51	4.13

### DESIGN FEATURES:

- Blow-out Proof Stem
- Pressure Balance Hole in Ball Slot
- Double Reduced Port
- Various Thread Standards Available
- Locking Device is Available Upon Request
- Casting Approved by TÜV AD 2000 - Merkblatt W0

### APPLICABLE STANDARDS:

- Design : ASME B16.34, MSS SP-110
- Wall Thickness : EN 12516 - 3
- Pipe Thread : ASME B1.20.1
- Inspection & Testing : MSS SP-110



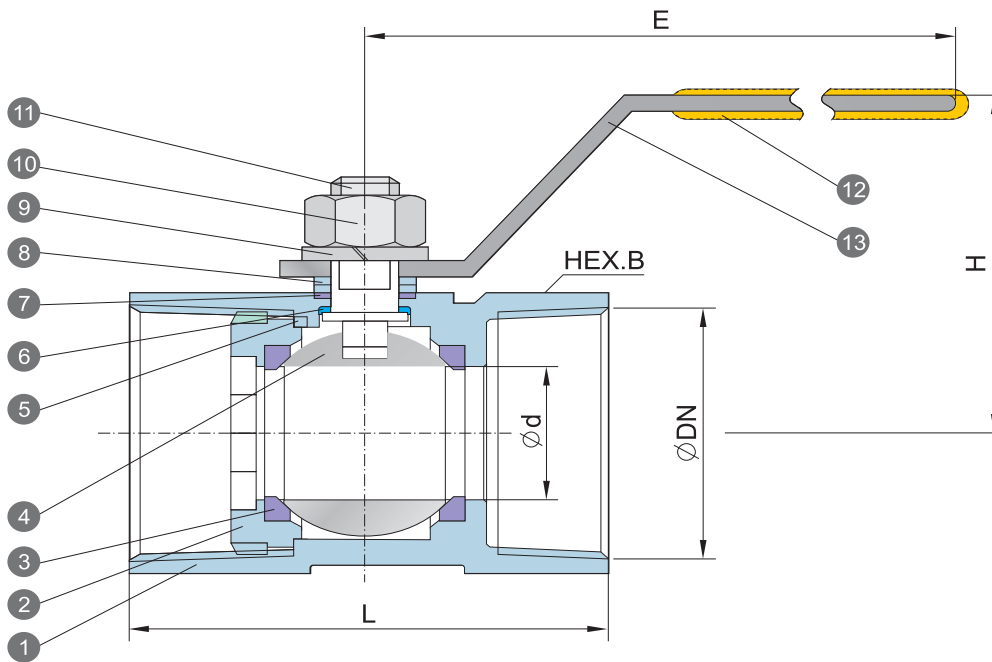
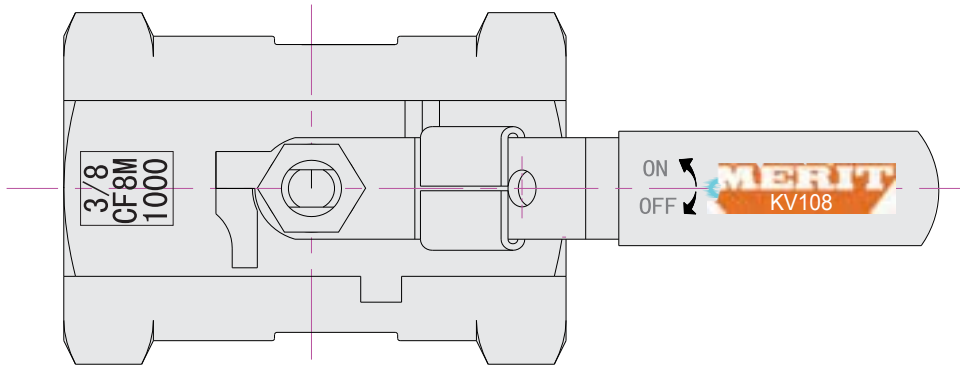
### Cv, Weights & Port

Size	Cv	Wt (Lbs)	Port
1/4"	N/A	0.16	0.20
3/8"	N/A	0.24	0.28
1/2"	N/A	0.42	0.36
3/4"	N/A	0.64	0.49
1"	18	0.93	0.59
1-1/4"	36	1.39	0.79
1-1/2"	48	1.90	0.98
2"	72	3.27	1.26

### Torques(in-lbs)

Size	Torque
1/4"	40
3/8"	40
1/2"	44
3/4"	53
1"	89
1-1/4"	115
1-1/2"	168
2"	252

Headquarters:  
 One Merit Drive  
 PO Box 43127  
 Cleveland, OH 44143  
 Tel: 216.261.9800  
 Toll Free Tel: 800.726.9800  
 Toll Free Fax: 855.MBFAXIT (623.2948)  
 Email: [mbsales@meritbrass.com](mailto:mbsales@meritbrass.com)  
 Websites: [www.meritbrass.com](http://www.meritbrass.com)  
[www.MBWebXpress.com](http://www.MBWebXpress.com)



NO.	PART NAME	MATERIALS		
1	Body	CF8M	CF8	WCB
2	End Plug	CF8M	CF8	WCB
3	Ball Seat	PTFE		
4	Ball	CF8M	CF8	
5	Body Gasket	PTFE		
6	Thrust Washer	PTFE		
7	Stem Packing	PTFE		

NO.	PART NAME	MATERIALS
8	Gland Nut	SUS 304
9	Stem Washer	SUS 304
10	Stem Nut	A194 - 8
11	Stem	SUS 316   SUS 304
12	Handle Sleeve	Vinyl Plastic
13	Handle	SUS 304

Unit: inch

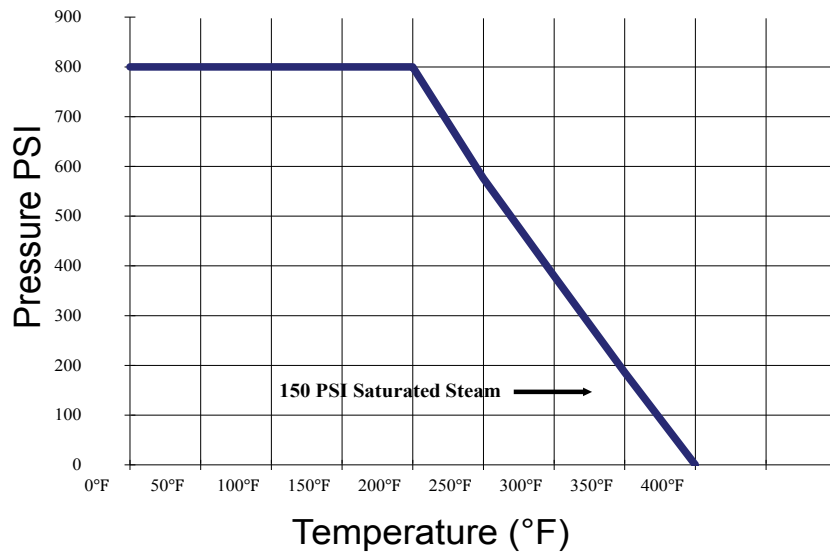
SIZE	Ød	L	H	E	HEX.B	ØDN
1/4"	0.20	1.63	1.34	2.76	0.67	NPT
3/8"	0.28	1.81	1.38	3.15	0.83	
1/2"	0.36	2.28	1.73	3.62	0.98	
3/4"	0.49	2.40	1.81	3.62	1.26	
1"	0.59	2.89	2.01	4.53	1.50	
1-1/4"	0.79	3.07	2.28	4.53	1.89	
1-1/2"	0.98	3.35	2.60	5.00	2.09	
2"	1.26	4.02	2.83	5.00	2.60	

### DESIGN FEATURES:

- Blow-out Proof Stem
- Pressure Balance Hole Ball Slot
- Reduced Port
- Various Threaded Standards Available
- Locking Device is Available Upon Request

### APPLICABLE STANDARDS:

- Design: ASME/ANSI B16.34 EN12516
- Wall Thickness: ASME/ANSI B16.34 EN12516
- Pipe Thread: ASME/ANSI B1.20.1
- Inspection & Testing: ASME/ANSI B16.34 EN12266



### Cv, Weights & Port

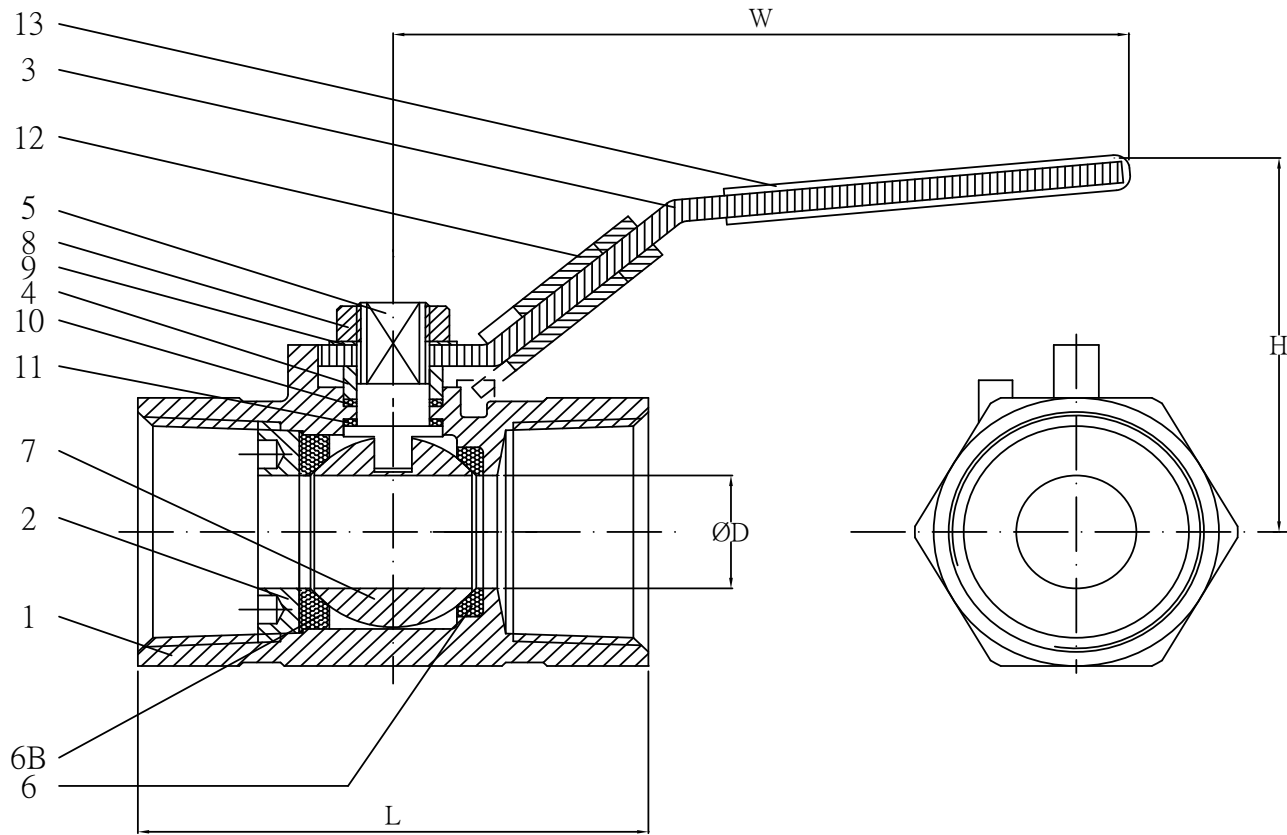
Size	Cv	Wt (Lbs)	Port
1/4"	4	0.19	0.20
3/8"	4	0.24	0.32
1/2"	4.5	0.34	0.35
3/4"	9	0.53	0.49
1"	16	0.77	0.63
1-1/4"	24	1.54	0.79
1-1/2"	37	1.77	0.98
2"	68	2.79	1.26

### Torques(in-lbs)

Size	Torque
1/4"	12
3/8"	12
1/2"	12
3/4"	20
1"	35
1-1/4"	55
1-1/2"	65
2"	80

Headquarters:  
 One Merit Drive  
 PO Box 43127  
 Cleveland, OH 44143  
 Tel: 216.261.9800  
 Toll Free Tel: 800.726.9800  
 Toll Free Fax: 855.MBFAXIT (623.2948)  
 Email: [mbsales@meritbrass.com](mailto:mbsales@meritbrass.com)  
 Websites: [www.meritbrass.com](http://www.meritbrass.com)  
[www.MBWebXpress.com](http://www.MBWebXpress.com)





NO.	PART NAME	QTY	MATERIAL
1	BODY	1	ASTM A351 CF8M
2	INSERT	1	SUS316
3	HANDLE	1	SUS304
4	GLAND	1	SUS304
5	STEM	1	SUS316
6	SEAT RING	1	TEFLON
6B	SEAT RING	1	TEFLON

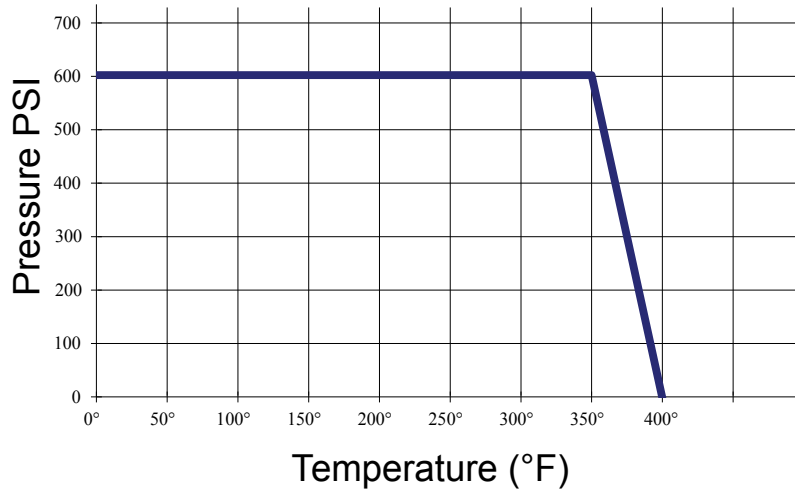
NO.	PART NAME	QTY	MATERIAL
7	BALL	1	SUS316
8	HANDLE NUT	1	SUS304
9	SPRING WASHER	1	SUS304
10	THRUST WASHER	1	TEFLON
11	THRUST WASHER	1	TEFLON
12	LOCKING DEVICE	1	SUS304
13	HANDLE COVER	1	PLASTIC

Unit: Inch

Size	D Port	L	H	W
1/4"	0.20	1.61	1.50	3.23
3/8"	0.32	1.73	1.57	3.23
1/2"	0.35	2.09	1.69	3.23
3/4"	0.49	2.36	1.97	3.94
1"	0.63	2.80	2.09	3.94
1-1/4"	0.79	3.23	2.60	5.91
1-1/2"	0.98	3.47	2.76	5.91
2"	1.26	4.09	2.95	5.91

### APPLICABLE STANDARDS:

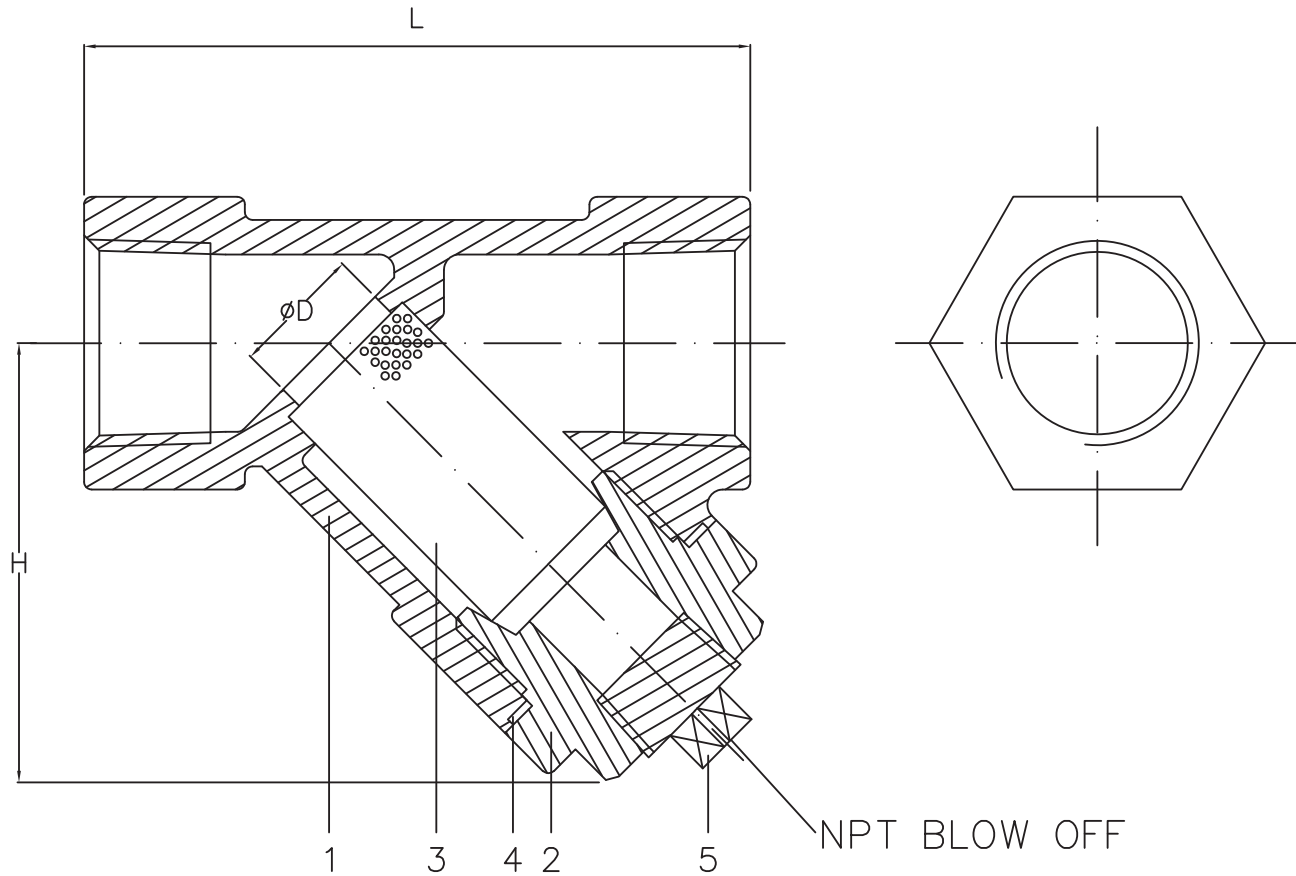
- Design: ASME B16.34
- Testing: API 598
- 600 PSI Working Pressure at 350°F



### Cv, Weights & Port

Size	Cv	Wt (Lbs)	Port
3/8"	2.5	0.68	0.35
1/2"	3.5	1.07	0.55
3/4"	5	1.46	0.67
1"	9	2.30	0.87
1-1/4"	16	3.64	1.06
1-1/2"	21	5.09	1.34
2"	40	8.17	1.65
2-1/2"	60	9.99	2.40
3"	75	13.92	2.99

Headquarters:  
 One Merit Drive  
 PO Box 43127  
 Cleveland, OH 44143  
 Tel: 216.261.9800  
 Toll Free Tel: 800.726.9800  
 Toll Free Fax: 855.MBFAXIT(623.2948)  
 Email: [mbsales@meritbrass.com](mailto:mbsales@meritbrass.com)  
 Websites: [www.meritbrass.com](http://www.meritbrass.com)  
[www.MBWebXpress.com](http://www.MBWebXpress.com)



NO.	PART NAME	QTY	MATERIAL
1	BODY	1	ASTM A351 CF8M
2	BONNET	2	ASTM A351 CF8M
3	SCREEN	1	SUS316 20 MESH SCREEN STANDARD SUS316 40 AVAILABLE UPON REQUEST
4	GASKET	1	PTFE
5	PLUG	1	ASTM A351 CF8M

Unit: Inch

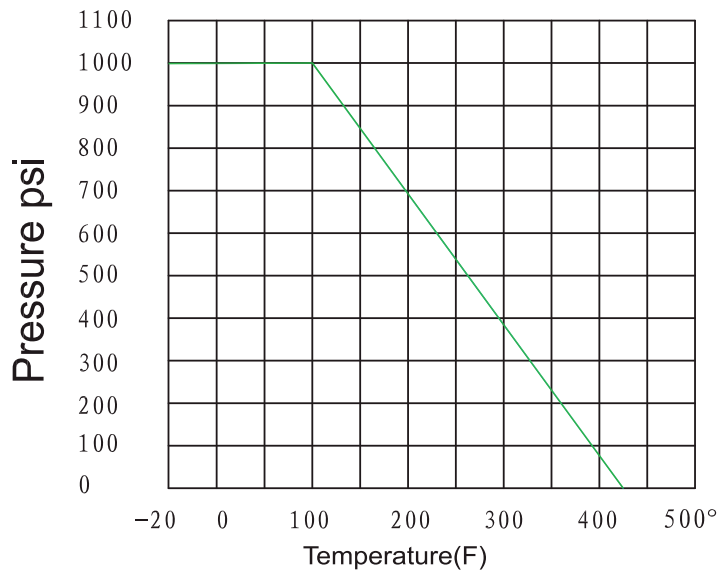
Size	D Port	L	H	Plug Size
3/8"	0.35	2.64	1.59	1/4"
1/2"	0.55	2.99	1.99	3/8"
3/4"	0.67	3.43	2.21	3/8"
1"	0.87	4.06	2.73	1/2"
1-1/4"	1.06	4.72	3.13	1/2"
1-1/2"	1.34	5.31	3.65	3/4"
2"	1.65	6.30	4.24	3/4"
2-1/2"	2.40	7.87	5.28	1-1/4"
3"	2.99	8.86	5.72	1-1/4"

**DESIGN FEATURES:**

- Blow-out Proof Stem
- Pressure Balance Hole in Ball Slot
- Full Port
- Various Thread Standards Available
- Casting Approved by TÜV AD 2000-Merkblatt W0

**APPLICABLE STANDARDS:**

- Design : ASME B16.34, MSS SP-110
- Wall Thickness : EN 12516-3
- Pipe Thread : ASME B1.20.1
- Inspection & Testing : MSS SP-110

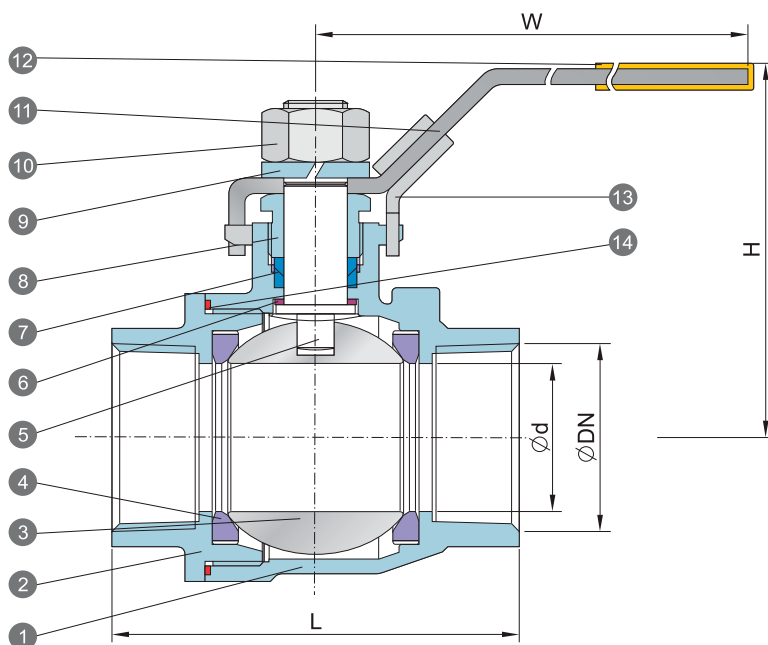
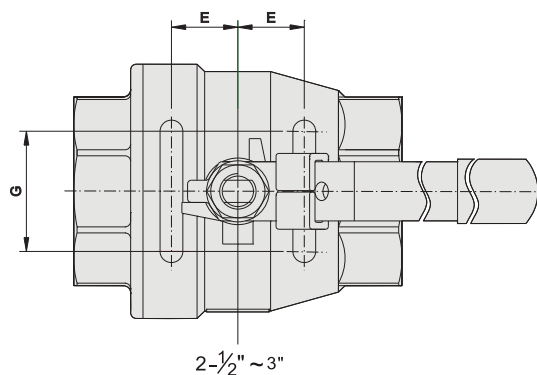
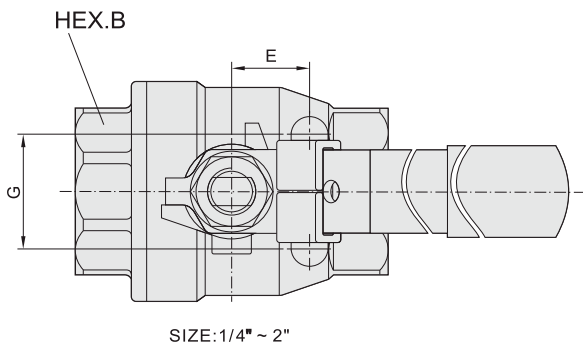
**Cv, Weights & Port**

Size	Cv	Wt (Lbs)	Port
1/4"	N/A	0.73	0.42
3/8"	N/A	0.75	0.47
1/2"	18	0.75	0.59
3/4"	36	1.13	0.79
1"	48	1.94	0.98
1-1/4"	72	2.71	1.26
1-1/2"	120	4.10	1.50
2"	190	6.47	1.97
2-1/2"	450	14.23	2.50
3"	600	19.42	2.99

**Torques(in-lbs)**

Size	Torque
1/4"	40
3/8"	40
1/2"	44
3/4"	53
1"	89
1-1/4"	115
1-1/2"	168
2"	252
2-1/2"	398
3"	637

Headquarters:  
One Merit Drive  
PO Box 43127  
Cleveland, OH 44143  
Tel: 216.261.9800  
Toll Free Tel: 800.726.9800  
Toll Free Fax: 855.MBFAXIT (623.2948)  
Email: [mbsales@meritbrass.com](mailto:mbsales@meritbrass.com)  
Websites: [www.meritbrass.com](http://www.meritbrass.com)  
[www.MBWebXpress.com](http://www.MBWebXpress.com)



NO.	PART NAME	MATERIALS		
1	Body	CF8M	CF8	WCB
2	Cap	CF8M	CF8	WCB
3	Ball	CF8M	CF8	
4	Ball Seat	PTFE		
5	Stem	SUS 316	SUS 304	
6	Thrust Washer	PTFE		
7	V-Ring Packing	PTFE		

NO.	PART NAME	MATERIALS
8	Gland Nut	SUS 304
9	Stem Washer	SUS 304
10	Stem Nut	A194 - 8
11	Handle	SUS 304
12	Handle Sleeve	Vinyl Plastic
13	Locking Device	SUS 304
14	Body Gasket	PTFE

Unit: inch

SIZE	$\phi d$	L	H	W	E	G	HEX.B	$\phi DN$
1/4"	0.42	2.28	2.28	3.94	0.05	1.12	0.93	NPT
3/8"	0.47	2.28	2.28	3.94	0.05	1.12	0.93	
1/2"	0.59	2.44	2.28	3.94	0.05	1.12	0.98	
3/4"	0.79	2.85	2.52	5.08	0.87	1.37	1.26	
1"	0.98	3.35	3.03	6.14	0.87	1.37	1.61	
1-1/4"	1.26	3.70	3.27	6.14	0.93	1.50	1.97	
1-1/2"	1.50	4.13	3.78	7.19	0.93	1.50	2.20	
2"	1.97	4.92	4.02	7.19	0.93	1.50	2.76	
2-1/2"	2.50	6.10	5.08	9.92	1.38	2.56	3.27	
3"	2.99	6.81	5.45	9.92	1.38	2.56	4.02	

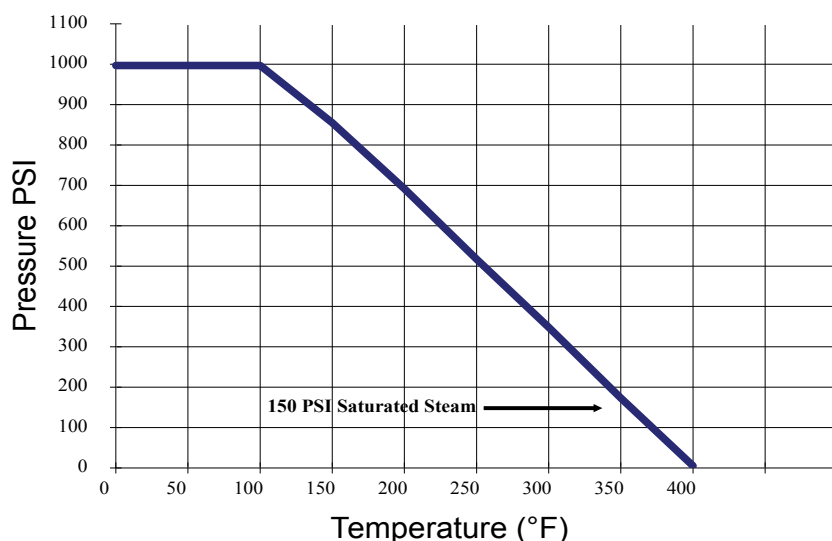


**DESIGN FEATURES:**

- Blow-out Proof Stem
- Pressure Balance Hole Ball Slot
- Full Port
- Various Thread Standards Available
- Locking Device is Available Upon Request

**APPLICABLE STANDARDS:**

- Design: ASME/ANSI B16.34 EN12516
- Wall Thickness: ASME/ANSI B16.34 EN12516
- Pipe Thread: ASME/ANSI B1.20.1
- Inspection & Testing: ASME/ANSI B16.34 EN12266



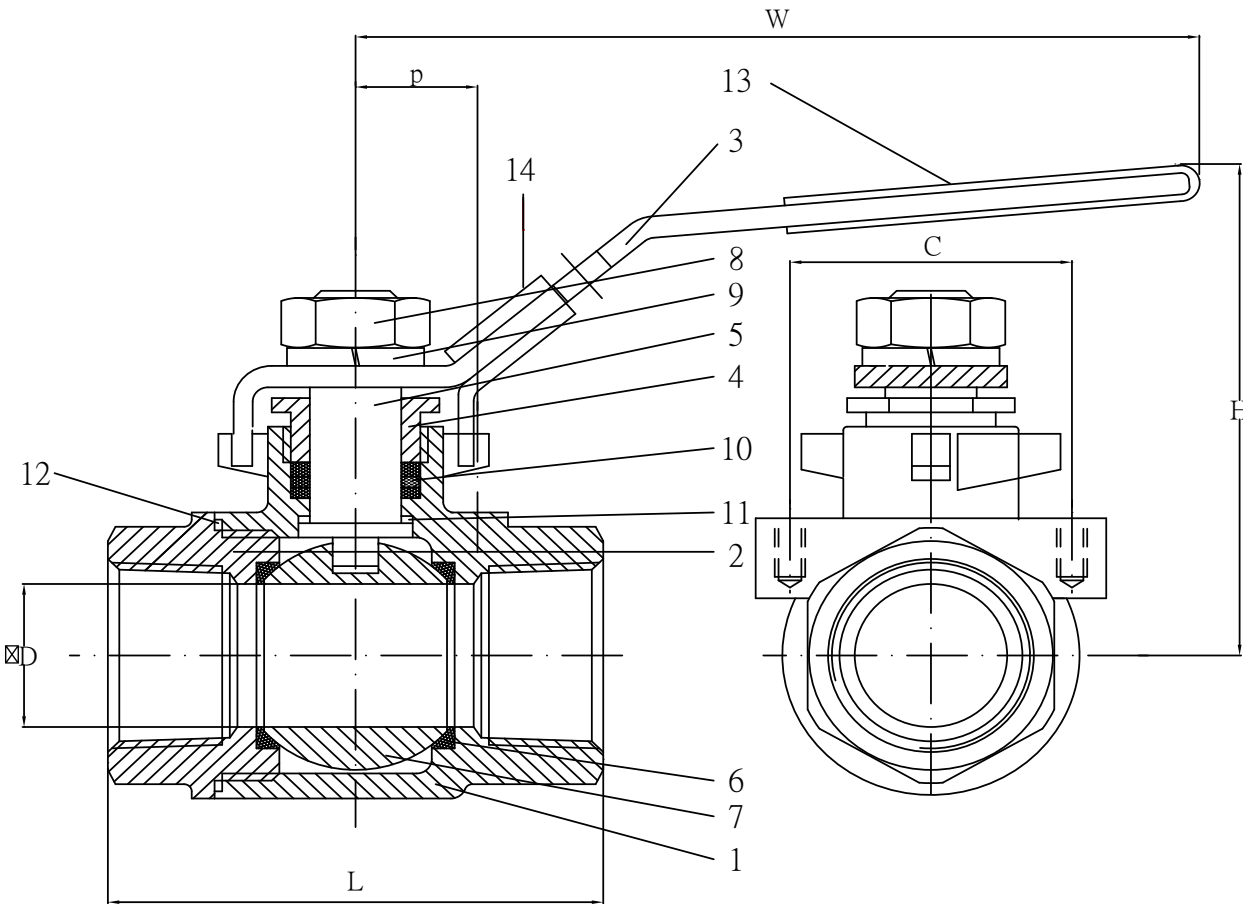
**Cv, Weights & Port**

Size	Cv	Wt (Lbs)	Port
1/4"	6	0.56	0.43
3/8"	8	0.49	0.49
1/2"	12	0.70	0.63
3/4"	28	1.18	0.98
1"	37	1.64	0.79
1-1/4"	48	2.56	1.26
1-1/2"	82	3.69	1.50
2"	115	6.24	2.01
2-1/2"	315	13.31	2.56
3"	370	19.60	3.15

**Torques(in-lbs)**

Size	Torque
1/4"	35
3/8"	35
1/2"	40
3/4"	60
1"	100
1-1/4"	130
1-1/2"	160
2"	225
2-1/2"	420
3"	1350

Headquarters:  
One Merit Drive  
PO Box 43127  
Cleveland, OH 44143  
Tel: 216.261.9800  
Toll Free Tel: 800.726.9800  
Toll Free Fax: 855.MBFAXIT (623.2948)  
Email: mbsales@meritbrass.com  
Websites: www.meritbrass.com  
www.MBWebXpress.com



NO.	PART NAME	QTY	MATERIAL
1	BODY	1	ASTMA351 CF8M
2	END CAP	1	ASTMA351 CF8M
3	HANDLE	1	SUS304
4	GLAND	1	SUS304
5	STEM	1	SUS316
6	SEAT RING	2	TEFLON
7	BALL	1	SUS316

NO.	PART NAME	QTY	MATERIAL
8	HANDLE NUT	1	SUS304
9	SPRING WASHER	1	SUS304
10	GLAND PACKING	1	PTFE
11	THRUST WASHER	1	PTFE
12	SEAL	1	PTFE
13	HANDLE COVER	1	PLASTIC
14	LOCKING DEVICE	1	SUS304

Unit: Inch

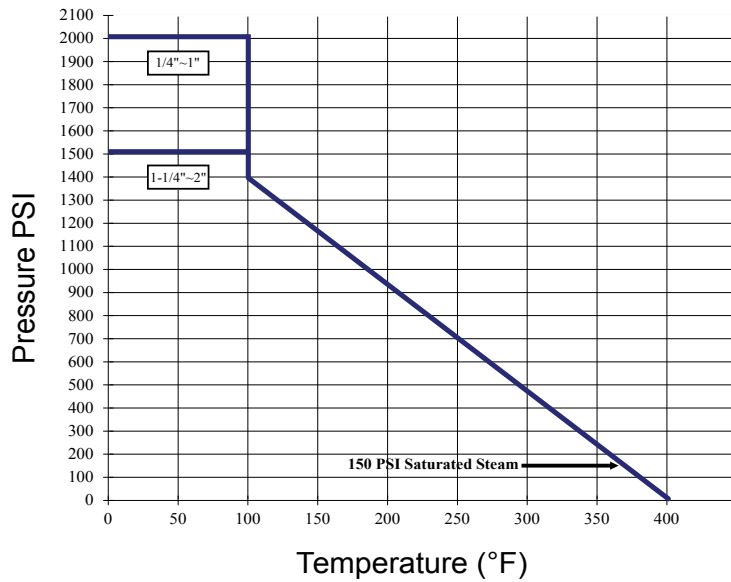
Size	D Port	L	W	H	C	P
1/4"	0.43	1.97	3.78	2.13	1.12	0.50
3/8"	0.49	1.97	3.78	2.13	1.12	0.50
1/2"	0.63	2.44	3.78	2.24	1.12	0.50
3/4"	0.79	2.80	4.96	2.70	1.38	0.88
1"	0.98	3.82	4.96	2.85	1.38	0.88
1-1/4"	1.26	4.09	7.01	3.56	1.50	0.95
1-1/2"	1.50	3.27	7.01	3.74	1.50	0.95
2"	2.01	4.92	7.01	4.11	1.50	0.95
2-1/2"	2.56	6.85	9.61	4.72	2.56	1.75
3"	3.15	6.02	9.61	5.16	2.56	1.75

**DESIGN FEATURES:**

- Blow-out Proof Stem
- Pressure Balance Hole Ball Slot
- Various Threaded Standards Available
- Locking Device is Available Upon Request

**APPLICABLE STANDARDS**

- Design: ASME/ANSI B16.34 EN12516
- Wall Thickness: ASME/ANSI B16.34 EN12516
- Pipe Thread: ASME/ANSI B1.20.1
- Inspection & Testing: ASME/ANSI B16.34 EN12266



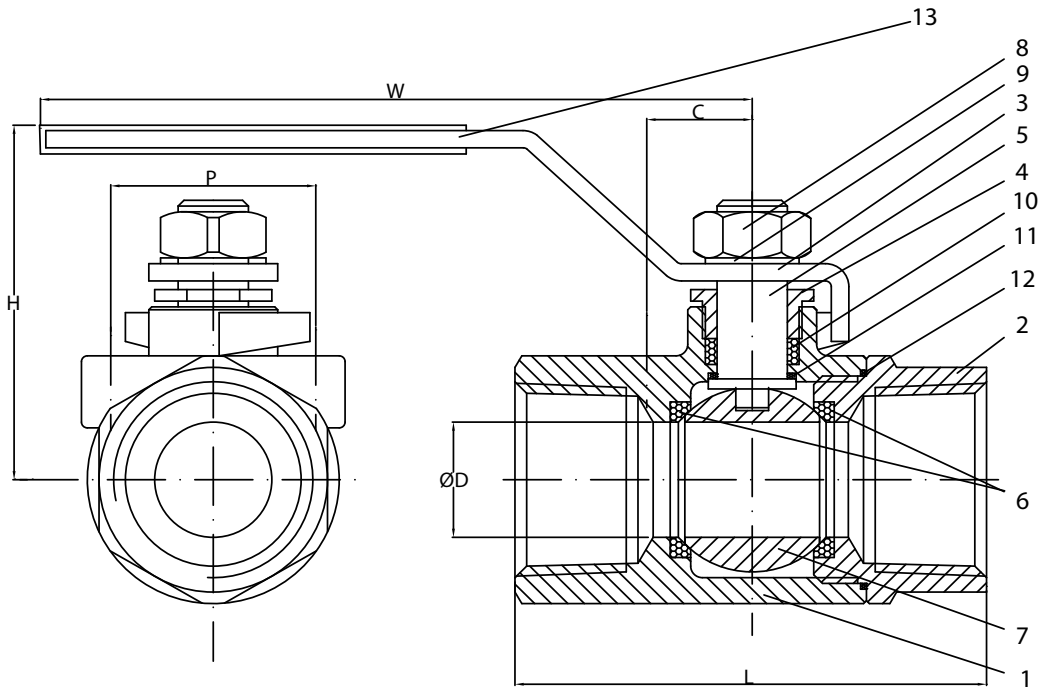
**Cv, Weights & Port**

Size	Cv	Wt (Lbs)	Port
1/4"	6	0.48	0.43
3/8"	6	0.48	0.43
1/2"	7	0.59	0.49
3/4"	10	1.06	0.63
1"	25	1.40	0.79
1-1/4"	35	2.91	0.98
1-1/2"	46	4.32	1.26
2"	80	5.25	1.50

**Torques(in-lbs)**

Size	Torque
1/4"	36
3/8"	36
1/2"	38
3/4"	43
1"	65
1-1/4"	100
1-1/2"	150
2"	185

Headquarters:  
 One Merit Drive  
 PO Box 43127  
 Cleveland, OH 44143  
 Tel: 216.261.9800  
 Toll Free Tel: 800.726.9800  
 Toll Free Fax: 855.MBFAXIT (623.2948)  
 Email: mbsales@meritbrass.com  
 Websites: www.meritbrass.com  
 www.MBWebXpress.com



NO.	PART NAME	QTY	MATERIAL
1	BODY	1	ASTM A351 CF8M
2	END CAP	1	ASTM A351 CF8M
3	HANDLE	1	SUS304
4	GLAND	1	SUS304
5	STEM	1	SUS316
6	SEAT RING	2	TEFLON
7	BALL	1	SUS316

NO.	PART NAME	QTY	MATERIAL
8	HANDLE NUT	1	SUS304
9	SPRING WASHER	1	SUS304
10	GRAND PACKING	3	TEFLON
11	THRUST WASHER	1	TEFLON
12	SEAL	1	TEFLON
13	HANDLE COVER	1	PLASTIC

Unit: Inch

	Size	Dimensions (Inch)					
		D Port	L	W	H	C	P
V220 (1/4" - 1")	1/4"	0.43	2.01	3.78	1.87	0.50	1.12
	3/8"	0.43	2.01	3.78	1.87	0.50	1.12
	1/2"	0.49	2.32	3.78	1.87	0.50	1.12
	3/4"	0.63	2.72	4.96	2.15	0.88	1.38
	1"	0.79	3.17	4.96	2.26	0.88	1.38
V215	1-1/4"	0.98	3.72	7.05	2.78	0.95	1.50
	1-1/2"	1.26	4.00	7.05	2.97	0.95	1.50
	2"	1.50	4.70	7.05	3.15	0.95	1.50

V310FP/  
SWV310FP

## 3 - PC Stainless Steel Ball Valve Full Port 1000 WOG

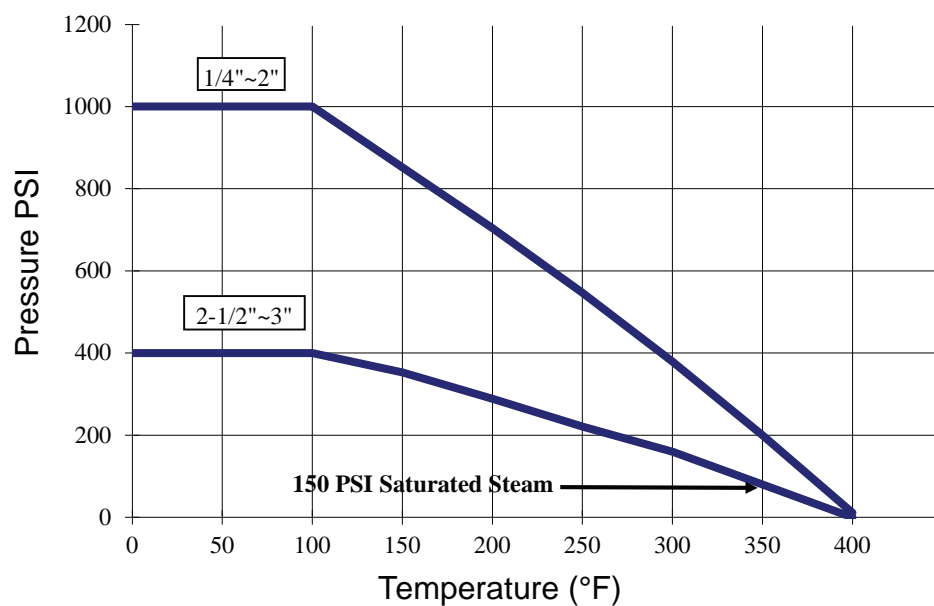
# MERIT BRASS

### DESIGN FEATURES:

- Blow-out proof stem
- Pressure balance hole ball slot
- Full Port
- Various threaded standards available
- Locking device is available upon request

### APPLICABLE STANDARDS:

- Design: ASME/ANSI B16.34 EN12516
- Wall Thickness: ASME/ANSI B16.34 EN12516
- Pipe thread: ASME/ANSI B1.20.1
- Socket weld: ASME/ANSI B16.11
- Inspection & testing: ASME/ANSI B16.34 EN12266



### Cv, Weights & Port

Size	Cv	Wt (Lbs)	Port
1/4"	6	0.69	0.43
3/8"	7	0.68	0.50
1/2"	10	1.03	0.63
3/4"	25	1.28	0.77
1"	35	2.47	0.98
1-1/4"	46	3.35	1.26
1-1/2"	80	4.36	1.50
2"	110	7.58	1.97
2-1/2"	310	14.17	2.56
3"	360	21.76	3.15

V310FP  
THREADED

### Torques(in-lbs)

Size	Torque
1/4"	36
3/8"	36
1/2"	40
3/4"	65
1"	100
1-1/4"	155
1-1/2"	185
2"	225
2-1/2"	420
3"	1380

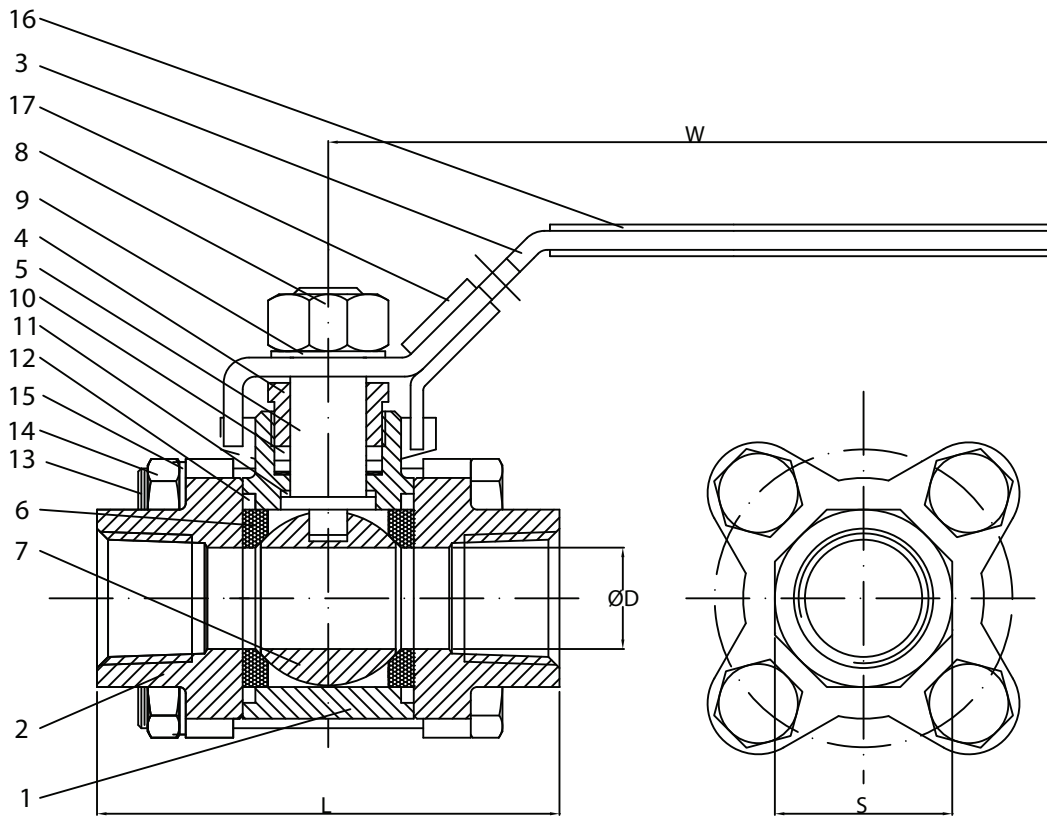
SWV310FP  
SOCKET WELD

Headquarters:  
One Merit Drive  
PO Box 43127  
Cleveland OH 44143  
TEL: 216 261 9800  
TOLL FREE TEL: 800 726 9800  
TOLL FREE FAX: 855 MBFAXIT  
Email: mbsales@meritbrass.com  
Websites: www.meritbrass.com  
www.MBWebXpress.com  
www.MBLeadFree.com



V310FP/  
SWV310FP

### 3 - PC Stainless Steel Ball Valve Full Port 1000 WOG



NO	PART NAME	QTY	MATERIAL
1	BODY	1	ASTM A351 CF8M
2	END CAP	2	ASTM A351 CF8M
3	HANDLE	1	SUS304
4	GLAND	1	SUS304
5	STEM	1	SUS316
6	SEAT RING	2	TEFLON
7	BALL	1	SUS316
8	HANDLE NUT	1	SUS304
9	SPRING WASHER	1	SUS304

NO	PART NAME	QTY	MATERIAL
10	THRUST WASHER	1,2	TEFLON
11	THRUST WASHER	1	TEFLON
12	SEAL WASHER	2	TEFLON
13	BOLTS	4	SUS304
14	NUT	4	SUS304
15	SPRING WASHER	4	SUS304
16	HANDLE COVER	1	PLASTIC
17	LOCKING DEVICE	1	SUS304

Unit: Inch

Size	D Port	S	L	W	H
1/4"	0.43	0.87	2.17	3.80	1.70
3/8"	0.50	0.87	2.17	3.80	1.70
1/2"	0.63	1.06	2.52	4.25	2.05
3/4"	0.77	1.30	2.91	4.25	2.15
1"	0.98	1.58	3.31	7.01	2.68
1-1/4"	1.26	1.97	3.78	7.01	2.87
1-1/2"	1.50	2.21	4.13	7.01	3.05
2"	1.97	2.76	4.84	7.01	3.43
2-1/2"	2.56	3.43	5.98	9.61	4.72
3"	3.15	3.94	6.85	9.61	5.16